

Schools: InBrief Mid-Year Census 2013

Centre for Education Statistics and Evaluation

InBrief summarises the results of the census of students in NSW government schools undertaken on Friday 2 August 2013, and the census of NSW non-government schools undertaken by the Australian Government Department of Education

Mid-Year Census

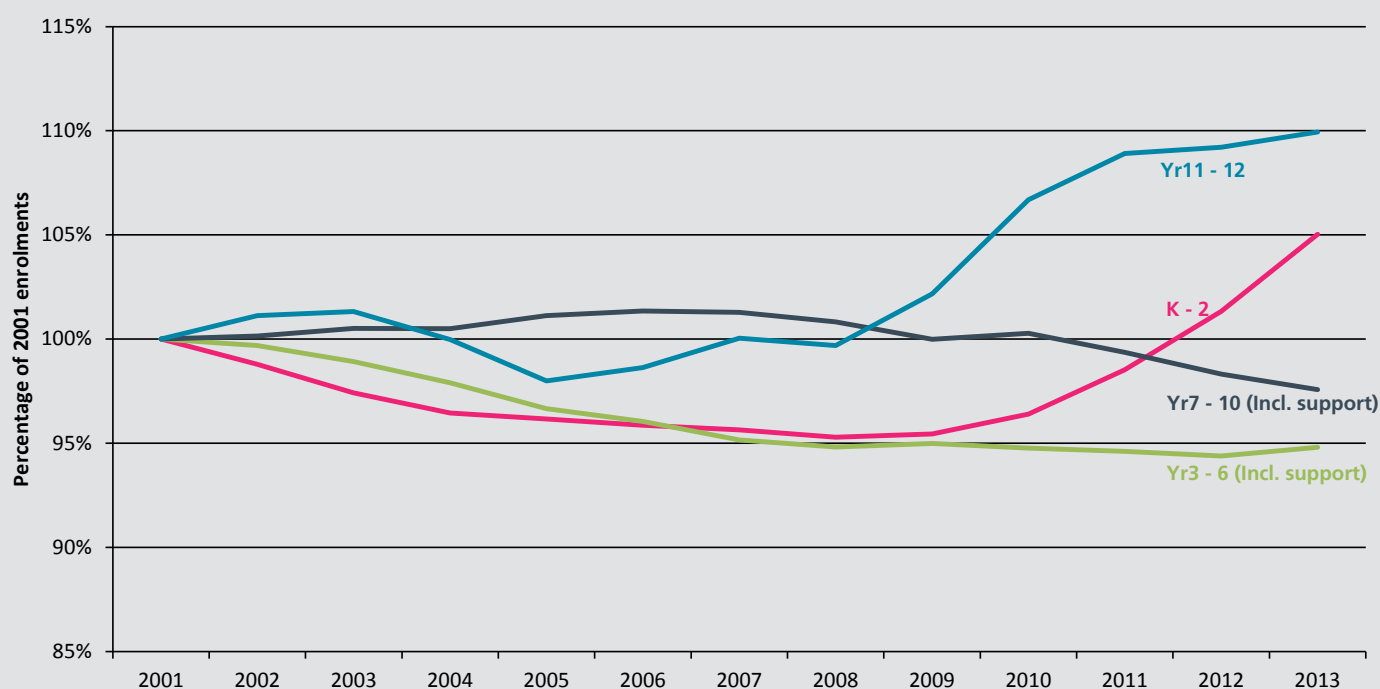
The Mid-year Census includes data on NSW Government schools (preschool, primary, secondary, central/community and special) and students (age at 1 July, grades, full time, part time, gender, and Aboriginality).

2013 Enrolments (FTE)

Figure 1 shows government school enrolments as a proportion of 2001 total enrolments. Since 2008 enrolments in Years 11 and 12 have been rising and now represent 110 per cent of 2001 enrolments. This is largely due to the raising of the school leaving age in 2010.

Figure 1

NSW government school enrolments (FTE) as a proportion of total 2001 enrolments (FTE) by grade groups



2013 InBrief Summary

NSW government

Full-time equivalent (FTE) enrolments

| | |
|-------------------------|------------------|
| Primary enrolments | 446,848.0 |
| Secondary enrolments | 303,433.6 |
| SSP enrolments | 5,064 |
| Total enrolments | 755,345.6 |

Aboriginal and Torres Strait Islander students

| | |
|---|----------|
| Total Aboriginal & Torres Strait Islander enrolments | 49,308.4 |
| Per cent Aboriginal & Torres Strait Islander enrolments | 6.5% |

Part-time students (Year 11 and 12 only)

| | |
|------------------------------|---------|
| Number of part-time students | 2,292 |
| FTE enrolments | 1,351.6 |

Preschool students

| | |
|------------------------------|---------|
| Number of preschool students | 4,433 |
| FTE enrolments | 2,371.1 |

NSW non-government

Full-time equivalent (FTE) enrolments

| | |
|-------------------------|------------------|
| Primary enrolments | 198,397.0 |
| Secondary enrolments | 200,416.3 |
| Total enrolments | 398,813.3 |

NSW government schools

| | |
|--|--------------|
| Primary schools | 1,600 |
| Separate infants schools | 17 |
| Central/community schools | 67 |
| Secondary schools | 398 |
| Schools for specific purposes (SSP) | 113 |
| Environmental education centres (EEC) | 23 |
| Total government schools | 2,218 |
| Preschools attached to primary/infants schools | 99 |
| Separate preschools | 1 |
| Total preschools | 100 |

NSW non-government schools

| | |
|-------------------------------------|------------|
| Primary schools | 489 |
| Secondary schools | 145 |
| Primary/secondary schools | 238 |
| Special schools | 45 |
| Total non-government schools | 917 |

Kindergarten to Year 2 enrolments have also risen markedly since 2009 and now represent 105 per cent of 2001 enrolments. These additional enrolments are the result of demographic changes, with larger numbers of children born in NSW since 2005.

In 2013, the proportion of Year 3 to Year 6 and Year 7 to Year 10 were both under 100 per cent of 2001 enrolments. While demographic changes account for some of the reduction in Year 3 to Year 6, the recent decline in Year 7 to Year 10 enrolments at government schools was not evident in non-government schools.

The total number of full-time equivalent students in NSW government schools increased by 7,111.5 or 1.9 per cent, from 748,234.1 in 2012 to 755,345.6 in 2013. This is the fifth year in a row that government enrolments have increased after a sustained downward trend between 1998 and 2008 and is the biggest increase over the last two decades.

Primary enrolment increased by 8,167 in 2013, nearly double the increase of 4,808 enrolments in 2012. In contrast secondary enrolments continued to decline, decreasing by 1,198 in 2013.

Enrolments in NSW government schools are affected by a number of factors, including the population of school age, the participation rate and the enrolment share between government and non-government schools. For students of school age (5 to 17 inclusive) the participation rate is close to 100 per cent, however after this age it declines noticeably.

Table 1

Enrolments (FTE) in NSW government schools, 1993-2013

| Year | Primary | Secondary | SSP | Total |
|-------------|----------------|------------------|--------------|------------------|
| 1993 | 445,238 | 308,909.2 | 3,901 | 758,048.2 |
| 1994 | 445,599 | 306,716.6 | 3,798 | 756,113.6 |
| 1995 | 446,722 | 305,395.6 | 3,789 | 755,906.6 |
| 1996 | 450,465 | 306,823.3 | 3,749 | 761,037.3 |
| 1997 | 451,560 | 308,922.7 | 3,690 | 764,172.7 |
| 1998 | 452,565 | 309,136.7 | 3,673 | 765,374.7 |
| 1999 | 453,454 | 308,116.1 | 3,762 | 765,332.1 |
| 2000 | 454,363 | 303,681.1 | 3,792 | 761,836.1 |
| 2001 | 451,096 | 301,771.4 | 3,873 | 756,740.4 |
| 2002 | 447,897 | 302,988.0 | 3,915 | 754,800.0 |
| 2003 | 443,213 | 304,034.0 | 3,938 | 751,185.0 |
| 2004 | 438,677 | 302,849.6 | 3,981 | 745,507.6 |
| 2005 | 434,876 | 302,578.3 | 4,124 | 741,578.3 |
| 2006 | 432,660 | 303,622.0 | 4,133 | 740,415.0 |
| 2007 | 429,900 | 304,457.7 | 4,278 | 738,635.7 |
| 2008 | 428,331 | 303,055.7 | 4,392 | 735,778.7 |
| 2009 | 429,000 | 303,180.7 | 4,466 | 736,646.7 |
| 2010 | 430,177 | 307,291.2 | 4,673 | 742,141.2 |
| 2011 | 433,873 | 306,893.2 | 4,774 | 745,540.2 |
| 2012 | 438,681 | 304,632.1 | 4,921 | 748,234.1 |
| 2013 | 446,848 | 303,433.6 | 5,064 | 755,345.6 |

Notes: Since 1993 some students have enrolled part-time. All enrolments are reported in full-time equivalent units (FTEs) and include full-time and part-time students.

Table 2

Enrolments (FTE) by ABS statistical area and grade groups in NSW government schools, mid-year 2013

| Statistical Area 4 | K-2 | Yr3-6 | Primary Total | Yr7-10 | Yr11-12 | Secondary Total | SSP | Statistical Area Total | % of NSW |
|-------------------------------------|----------------|----------------|----------------|----------------|-----------------|------------------|--------------|------------------------|--------------|
| Syd - Baulkham Hills and Hawkesbury | 6,750 | 8,561 | 15,311 | 7,034 | 3,015.7 | 10,049.7 | 99 | 25,459.7 | 3.4% |
| Syd - Blacktown | 10,272 | 12,619 | 22,891 | 9,302 | 3,417.5 | 12,719.5 | 457 | 36,067.5 | 4.8% |
| Syd - City and Inner South | 4,131 | 4,137 | 8,268 | 3,410 | 2,056.8 | 5,466.8 | 52 | 13,786.8 | 1.8% |
| Syd - Eastern Suburbs | 4,698 | 4,513 | 9,211 | 3,698 | 1,820.1 | 5,518.1 | 94 | 14,823.1 | 2.0% |
| Syd - Inner South West | 13,814 | 16,747 | 30,561 | 12,517 | 5,922.3 | 18,439.3 | 498 | 49,498.3 | 6.6% |
| Syd - Inner West | 6,528 | 7,055 | 13,583 | 6,406 | 2,606.1 | 9,012.1 | 189 | 22,784.1 | 3.0% |
| Syd - North Sydney and Hornsby | 11,031 | 12,268 | 23,299 | 8,272 | 4,258.7 | 12,530.7 | 186 | 36,015.7 | 4.8% |
| Syd - Northern Beaches | 8,150 | 8,878 | 17,028 | 5,518 | 2,788.6 | 8,306.6 | 120 | 25,454.6 | 3.4% |
| Syd - Outer South West | 8,532 | 10,767 | 19,299 | 9,992 | 3,725.1 | 13,717.1 | 427 | 33,443.1 | 4.4% |
| Syd - Outer West and Blue Mountains | 9,000 | 11,100 | 20,100 | 9,972 | 4,418.3 | 14,390.3 | 217 | 34,707.3 | 4.6% |
| Syd - Parramatta | 11,715 | 13,268 | 24,983 | 10,340 | 4,651.6 | 14,991.6 | 500 | 40,474.6 | 5.4% |
| Syd - Ryde | 4,859 | 5,539 | 10,398 | 4,447 | 2,245.0 | 6,692.0 | 88 | 17,178.0 | 2.3% |
| Syd - South West | 11,790 | 15,541 | 27,331 | 14,436 | 6,423.3 | 20,859.3 | 244 | 48,434.3 | 6.4% |
| Syd - Sutherland | 6,341 | 7,707 | 14,048 | 7,941 | 3,378.7 | 11,319.7 | 137 | 25,504.7 | 3.4% |
| Sydney Total | 117,611 | 138,700 | 256,311 | 113,285 | 50,727.8 | 164,012.8 | 3,308 | 423,631.8 | 56.3% |
| Capital Region | 5,799 | 7,272 | 13,071 | 6,790 | 2,318.0 | 9,108.0 | 57 | 22,236.0 | 2.9% |
| Central Coast | 9,489 | 12,250 | 21,739 | 11,856 | 4,528.6 | 16,384.6 | 322 | 38,445.6 | 5.1% |
| Central West | 6,075 | 7,485 | 13,560 | 7,252 | 2,613.6 | 9,865.6 | 209 | 23,634.6 | 3.1% |
| Coffs Harbour - Grafton | 3,787 | 4,969 | 8,756 | 5,174 | 2,036.3 | 7,210.3 | 45 | 16,011.3 | 2.1% |
| Far West and Orana | 3,665 | 4,638 | 8,303 | 4,788 | 1,561.3 | 6,349.3 | 38 | 14,690.3 | 1.9% |
| Hunter Valley exc Newcastle | 8,307 | 10,050 | 18,357 | 8,793 | 2,746.9 | 11,539.9 | 57 | 29,953.9 | 4.0% |
| Illawarra | 8,186 | 10,561 | 18,747 | 9,475 | 3,670.4 | 13,145.4 | 184 | 32,076.4 | 4.2% |
| Mid North Coast | 5,385 | 7,312 | 12,697 | 7,327 | 2,703.2 | 10,030.2 | 0 | 22,727.2 | 3.0% |
| Murray | 3,035 | 3,848 | 6,883 | 3,816 | 1,373.2 | 5,189.2 | 78 | 12,150.2 | 1.6% |
| New England and North West | 5,723 | 6,946 | 12,669 | 6,761 | 2,422.1 | 9,183.1 | 109 | 21,961.1 | 2.9% |
| Newcastle and Lake Macquarie | 9,917 | 12,182 | 22,099 | 12,650 | 4,530.7 | 17,180.7 | 293 | 39,572.7 | 5.2% |
| Richmond - Tweed | 6,217 | 7,788 | 14,005 | 7,718 | 3,081.5 | 10,799.5 | 65 | 24,869.5 | 3.3% |
| Riverina | 4,576 | 5,768 | 10,344 | 5,445 | 1,821.9 | 7,266.9 | 190 | 17,800.9 | 2.4% |
| Southern Highlands and Shoalhaven | 4,014 | 5,293 | 9,307 | 4,560 | 1,608.1 | 6,168.1 | 109 | 15,584.1 | 2.1% |
| Rest of NSW | 84,175 | 106,362 | 190,537 | 102,405 | 37,015.8 | 139,420.8 | 1,756 | 331,713.8 | 43.9% |
| NSW | 201,786 | 245,062 | 446,848 | 215,690 | 87,743.6 | 303,433.6 | 5,064 | 755,345.6 | 100% |

Notes:

- Students in Distance Education and Opportunity Classes (OC) are included with their appropriate grade levels.
- 2013 represents a transition year from the DEC regional structure to the new principal networks. From 2013 onwards aggregate geographical data will be reported by ABS statistical area 4 (refer to the maps on the next page).
- Primary support students are included in Year 3 to 6. Secondary support students are included in Year 7 to 10.

The largest increases in enrolments were in Year 1 and Year 2. Year 1 enrolments rose by 4.1 per cent from 64,771 students in 2012 to 67,450 in 2013 while Year 2 enrolments rose by 4.3 per cent from 62,020 students in 2012 to 64,666 in 2013. Kindergarten enrolments increased by 2.6 per cent, following rises of 0.9 per cent in 2010, 3.9 per cent in 2011 and 3.5 per cent in 2012. The large Year 1 and Year 2 increase is mainly due to the progression of the large increases of Kindergarten enrolments during 2011 and 2012.

Enrolments (FTE) by statistical area

Table 2 shows enrolments by grade groups and ABS statistical area. As Map 1 illustrates, Sydney - Inner South West had the highest number of government school students in 2013, with

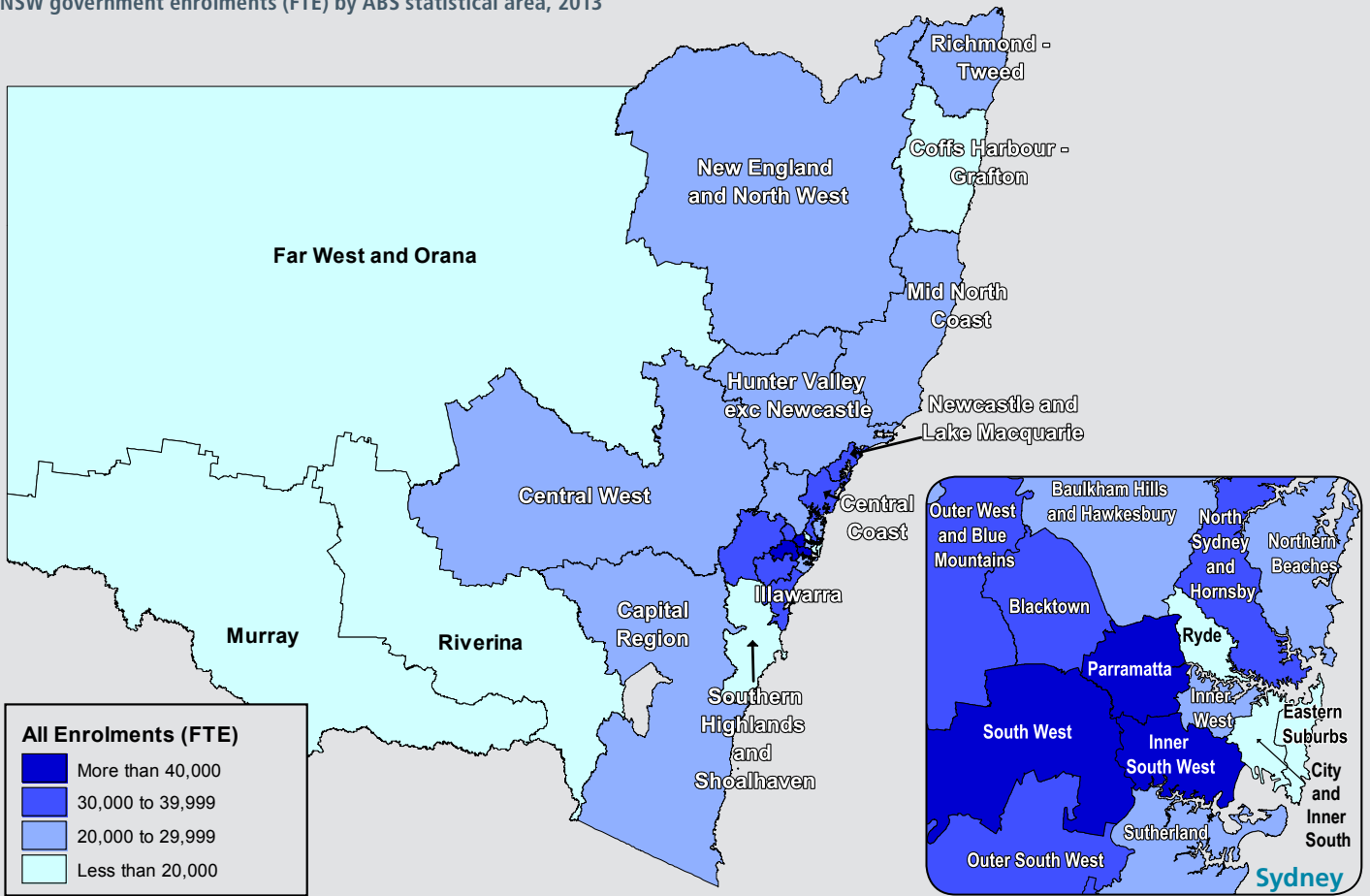
49,498.3 enrolments, which is 6.6 per cent of the state total. Enrolments in the fourteen Sydney statistical areas account for more than 56 per cent of NSW's total enrolments.

All Sydney statistical areas experienced an increase in enrolments in 2013. Sydney - North Sydney and Hornsby saw the largest growth in student numbers with increases of over 1,100 enrolments between 2012 and 2013. The majority of the increase was in primary enrolments.

The Mid-North Coast experienced the largest decline in 2013, down by 278.3 enrolments, with secondary enrolments accounting for the entire decrease. Apart from the statistical areas of Central West, Hunter Valley excluding Newcastle, Newcastle and Lake Macquarie and Riverina, all non-Sydney statistical areas showed a decrease in enrolments.

Map 1

NSW government enrolments (FTE) by ABS statistical area, 2013



Map 2

Percentage of NSW government Aboriginal enrolments (FTE) by ABS statistical area, 2013

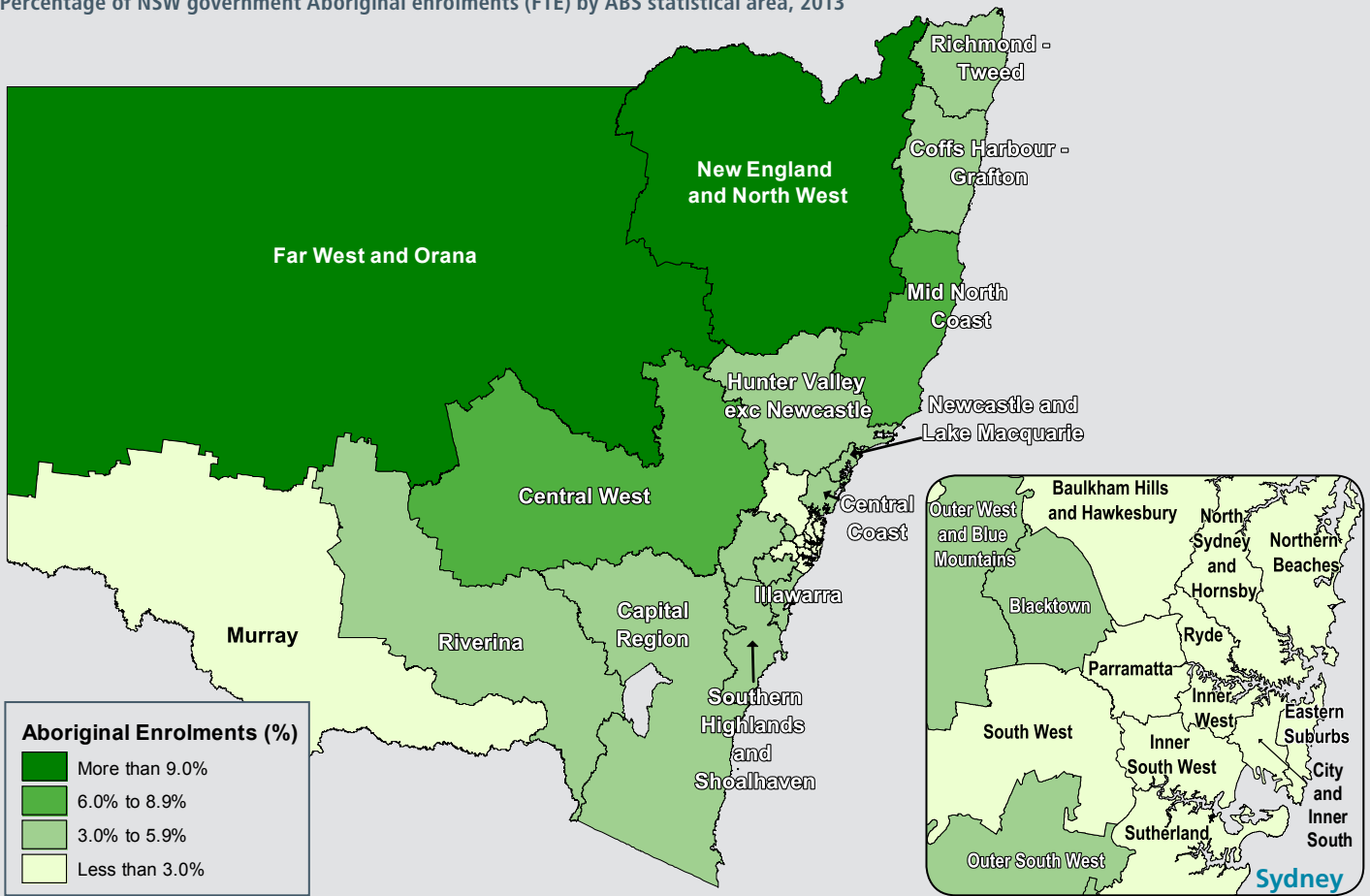


Table 3

Enrolments (FTE) of Aboriginal students by ABS statistical area and grade groups in NSW government schools, mid-year 2013

| Statistical Area 4 | K-2 | Yr3-6 | Primary Total | Yr7-10 | Yr11-12 | Secondary Total | Statistical Area Total | % of NSW |
|-------------------------------------|---------------|---------------|---------------|---------------|----------------|-----------------|------------------------|--------------|
| Syd - Baulkham Hills and Hawkesbury | 70 | 95 | 165 | 120 | 31.1 | 151.1 | 319.1 | 0.6% |
| Syd - Blacktown | 724 | 836 | 1,560 | 662 | 175.9 | 837.9 | 2,462.9 | 5.0% |
| Syd - City and Inner South | 169 | 193 | 362 | 132 | 49.9 | 181.9 | 563.9 | 1.1% |
| Syd - Eastern Suburbs | 91 | 119 | 210 | 141 | 40.8 | 181.8 | 394.8 | 0.8% |
| Syd - Inner South West | 175 | 195 | 370 | 148 | 63.0 | 211.0 | 596.0 | 1.2% |
| Syd - Inner West | 90 | 90 | 180 | 117 | 26.2 | 143.2 | 330.2 | 0.7% |
| Syd - North Sydney and Hornsby | 36 | 42 | 78 | 18 | 10.6 | 28.6 | 114.6 | 0.2% |
| Syd - Northern Beaches | 31 | 42 | 73 | 53 | 10.0 | 63.0 | 139.0 | 0.3% |
| Syd - Outer South West | 600 | 672 | 1,272 | 614 | 157.8 | 771.8 | 2,119.8 | 4.3% |
| Syd - Outer West and Blue Mountains | 604 | 737 | 1,341 | 680 | 179.0 | 859.0 | 2,247.0 | 4.6% |
| Syd - Parramatta | 154 | 182 | 336 | 123 | 41.7 | 164.7 | 541.7 | 1.1% |
| Syd - Ryde | 23 | 24 | 47 | 30 | 7.0 | 37.0 | 84.0 | 0.2% |
| Syd - South West | 301 | 352 | 653 | 320 | 93.6 | 413.6 | 1,078.6 | 2.2% |
| Syd - Sutherland | 89 | 117 | 206 | 124 | 42.0 | 166.0 | 376.0 | 0.8% |
| Sydney Total | 3,157 | 3,696 | 6,853 | 3,282 | 928.6 | 4,210.6 | 11,367.6 | 23.1% |
| Capital Region | 479 | 605 | 1,084 | 612 | 127.3 | 739.3 | 1,828.3 | 3.7% |
| Central Coast | 716 | 892 | 1,608 | 855 | 268.6 | 1,123.6 | 2,803.6 | 5.7% |
| Central West | 841 | 1,007 | 1,848 | 977 | 262.4 | 1,239.4 | 3,109.4 | 6.3% |
| Coffs Harbour - Grafton | 517 | 593 | 1,110 | 646 | 158.4 | 804.4 | 1,941.4 | 3.9% |
| Far West and Orana | 1,388 | 1,669 | 3,057 | 1,704 | 440.8 | 2,144.8 | 5,234.8 | 10.6% |
| Hunter Valley exc Newcastle | 800 | 1,009 | 1,809 | 833 | 204.6 | 1,037.6 | 2,856.6 | 5.8% |
| Illawarra | 517 | 650 | 1,167 | 606 | 175.0 | 781.0 | 1,961.0 | 4.0% |
| Mid North Coast | 843 | 1,031 | 1,874 | 1,016 | 288.0 | 1,304.0 | 3,178.0 | 6.4% |
| Murray | 273 | 327 | 600 | 289 | 63.8 | 352.8 | 961.8 | 2.0% |
| New England and North West | 1,402 | 1,463 | 2,865 | 1,500 | 377.6 | 1,877.6 | 4,782.6 | 9.7% |
| Newcastle and Lake Macquarie | 726 | 939 | 1,665 | 928 | 238.1 | 1,166.1 | 2,866.1 | 5.8% |
| Richmond - Tweed | 671 | 862 | 1,533 | 894 | 294.2 | 1,188.2 | 2,732.2 | 5.5% |
| Riverina | 598 | 657 | 1,255 | 679 | 154.0 | 833.0 | 2,131.0 | 4.3% |
| Southern Highlands and Shoalhaven | 421 | 502 | 923 | 491 | 123.0 | 614.0 | 1,554.0 | 3.2% |
| Rest of NSW | 10,192 | 12,206 | 22,398 | 12,030 | 3,175.8 | 15,205.8 | 37,940.8 | 76.9% |
| NSW | 13,349 | 15,902 | 29,251 | 15,312 | 4,104.4 | 19,416.4 | 49,308.4 | 100% |
| As percentage of grade group | 6.6% | 6.5% | 6.5% | 7.1% | 4.7% | 6.4% | 6.5% | |

Notes:

- Students in Distance Education and Opportunity Classes (OC) are included with their appropriate grade levels.
- 2013 represents a transition year from the DEC regional structure to the new principal networks. From 2013 onwards aggregate geographical data will be reported by ABS statistical area 4.
- Primary support students are included in Year 3 to 6. Secondary support students are included in Year 7 to 10.
- There were 641 Aboriginal students enrolled in SSP's, representing 12.7% of total SSP enrolments. This figure is not broken down into ABS statistical area 4.

Aboriginal enrolments (FTE)

Table 3 shows enrolments of Aboriginal students by grade groups and ABS statistical area, while Map 2 illustrates the percentage distribution of Aboriginal enrolments across NSW by statistical area. Map 2 shows that Far West and Orana had the highest Aboriginal enrolments at 10.6 per cent of the total NSW Aboriginal enrolments, while 9.7 per cent of Aboriginal students were enrolled in New England and North West.

The fourteen Sydney statistical areas account for just over 23 per cent of total NSW Aboriginal enrolments.

Sydney - Outer West and Blue Mountains and Sydney - Other South West have the highest Aboriginal enrolments out of the Sydney statistical areas, 4.6 per cent and 4.3 per cent respectively. In contrast, Sydney - North Sydney and Hornsby, Sydney - Northern Beaches and Sydney - Ryde all had less than 0.4 per cent of NSW Aboriginal enrolments.

Enrolments of Aboriginal students have increased by 2,221.6 from 47,086.8 in 2012 to 49,308.4 in 2013. The Hunter Valley excluding Newcastle saw the largest increase of 241.4 students, from 2,615.2 in 2012 to 2,856.6 in 2013.

Growth in enrolments (FTE) at government and non-government schools

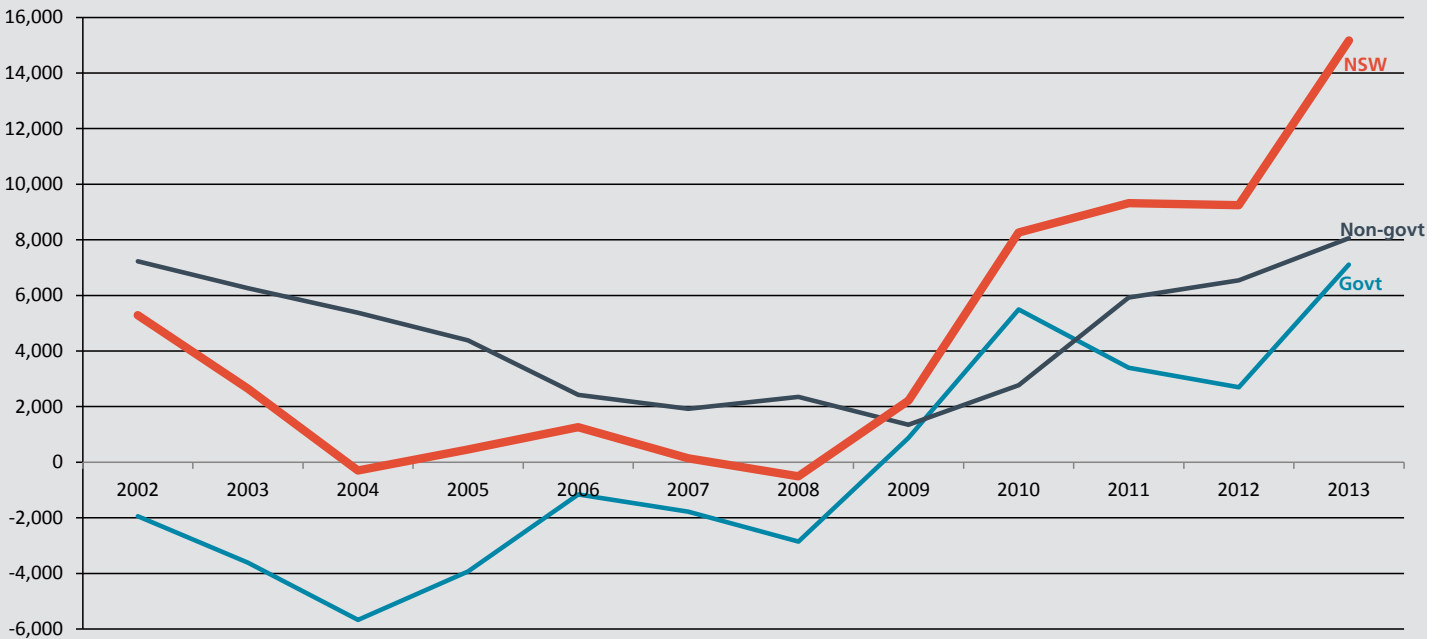
Figure 2 shows the growth in enrolments of government and non-government schools from 2003. Along with parental choice in selecting non-government education, school enrolment growth can also be affected by the base school population, the changing legal and policy framework in NSW and the ability of schools to respond to demographic changes.

As shown in Figure 2, government enrolment growth has been lower each year than the enrolment growth of non-government schools. The one exception was in 2010 when government enrolment increased by 5,494, almost double the non-government increase of 2,767 enrolments.

In 2013, total NSW school enrolments increased sharply by 15,169 enrolments from 2012. Government schools contributed almost half the increase of NSW school enrolments, 7,112, while non-government schools increased by 8,057.

Figure 2

K-12 student enrolment (FTE) growth in NSW government and non-government schools, 2003-2013



Government enrolment share (FTE)

Table 5 shows the enrolment share for students at government and non-government schools in NSW. Although the increase in total enrolments at NSW government schools in 2013 was the highest over the last two decades, overall government enrolment share still declined by 0.3 percentage points, from 65.7 per cent in 2012 to 65.4 per cent in 2013. This is due to the larger enrolment growth in non-government schools than government schools.

Since 2003, total government enrolment share fell on average around 0.2 percentage points each year, except in 2010 when enrolment share remained unchanged at 66.2 per cent. This was due to the enrolment growth of government schools outpacing enrolment growth of non-government schools in 2010 as shown in Figure 2. But from 2010 onwards the enrolment share resumed its long-term downward trend.

Figure 4 shows NSW government enrolment share by education level. Primary enrolment share has remained constant since 2008 and is generally 7 to 8 percentage points higher than secondary enrolment share. However within primary education, the Kindergarten to Year 2 and Year 3 to Year 6 enrolment share in 2013 continued the diverging trend first observed in 2006. Kindergarten to Year 2 enrolment share rose from 70.1 per cent in 2012 to 70.2 per cent in 2013, while Year 3 to Year 6 declined from 68.8 per cent in 2012 to 68.6 per cent in 2013.

The 2013 secondary enrolment share continues its long-term decline, falling by 0.6 percentage points from 61.1 per cent in 2012 to 60.5 per cent in 2013. Junior secondary contributed most to the decrease in secondary enrolment share, declining by 0.7 percentage points in 2013 while senior secondary declined by 0.3 percentage points.

Table 5

Enrolments (FTE) in NSW government and non-government schools, 1901-2013

| Year | Government | | Non-Government | | Total |
|-------------|----------------|--------------|----------------|--------------|------------------|
| | Enrolments | Share | Enrolments | Share | |
| 1901 | 210,588 | 77.6% | 60,837 | 22.4% | 271,425 |
| 1911 | 221,810 | 78.3% | 61,550 | 21.7% | 283,360 |
| 1921 | 315,228 | 80.1% | 78,460 | 19.9% | 393,688 |
| 1931 | 387,881 | 80.8% | 92,285 | 19.2% | 480,166 |
| 1941 | 337,073 | 76.2% | 105,319 | 23.8% | 442,392 |
| 1951 | 405,906 | 75.3% | 133,019 | 24.7% | 538,925 |
| 1961 | 610,883 | 75.2% | 201,147 | 24.8% | 812,030 |
| 1971 | 771,713 | 77.6% | 222,195 | 22.4% | 993,908 |
| 1981 | 790,575 | 76.9% | 237,853 | 23.1% | 1,028,428 |
| 1986 | 755,257 | 73.6% | 270,745 | 26.4% | 1,026,011 |
| 1991 | 746,417 | 72.0% | 290,896 | 28.0% | 1,037,313 |
| 1996 | 761,037 | 71.4% | 305,383 | 28.6% | 1,066,420 |
| 2002 | 754,800 | 68.2% | 351,455 | 31.8% | 1,106,255 |
| 2003 | 751,185 | 67.7% | 357,716 | 32.3% | 1,108,901 |
| 2004 | 745,508 | 67.2% | 363,090 | 32.8% | 1,108,598 |
| 2005 | 741,578 | 66.9% | 367,476 | 33.1% | 1,109,054 |
| 2006 | 740,415 | 66.7% | 369,902 | 33.3% | 1,110,317 |
| 2007 | 738,636 | 66.5% | 371,822 | 33.5% | 1,110,458 |
| 2008 | 735,779 | 66.3% | 374,171 | 33.7% | 1,109,950 |
| 2009 | 736,647 | 66.2% | 375,522 | 33.8% | 1,112,169 |
| 2010 | 742,141 | 66.2% | 378,289 | 33.8% | 1,120,430 |
| 2011 | 745,540 | 66.0% | 384,209 | 34.0% | 1,129,749 |
| 2012 | 748,234 | 65.7% | 390,756 | 34.3% | 1,138,990 |
| 2013 | 755,346 | 65.4% | 398,813 | 34.6% | 1,154,159 |

Source: Australian Bureau of Statistics, Schools Australia 2013; Table 43a.
Notes:

- Government and non-government school data for 1901-1961 include students in ACT schools.
- From 1993 the table includes full-time and part-time students, reported in full-time equivalent units (FTEs).

Figure 4

NSW government enrolments (FTE) share, 2002-2013

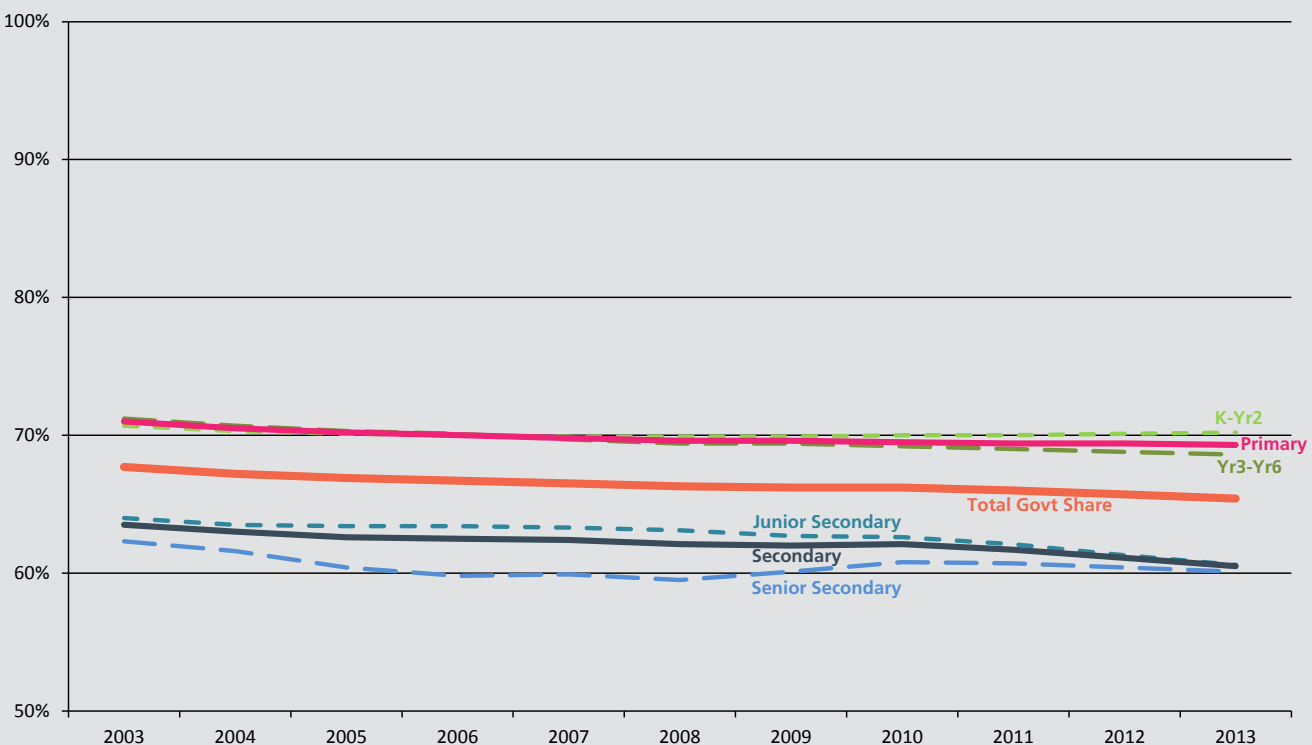


Table 4

Apparent retention in NSW government schools, 2003-2013

| Year | Years 7-10 | | | Years 7-11 | | | Years 7-12 | | | Years 10-11 | | | Years 10-12 | | |
|-------------|--------------|--------------|--------------|-------------|-------------|-------------|-------------|-------------|-------------|-------------|-------------|-------------|-------------|-------------|-------------|
| | Boys | Girls | Total | Boys | Girls | Total | Boys | Girls | Total | Boys | Girls | Total | Boys | Girls | Total |
| 2003 | 95.8 | 96.3 | 96.0 | 75.2 | 84.6 | 79.8 | 61.7 | 71.9 | 66.7 | 78.8 | 87.7 | 83.2 | 64.8 | 75.2 | 69.9 |
| 2004 | 94.7 | 96.0 | 95.4 | 74.3 | 83.7 | 78.9 | 61.9 | 73.4 | 67.5 | 77.5 | 87.0 | 82.2 | 64.9 | 76.1 | 70.4 |
| 2005 | 94.8 | 95.4 | 95.1 | 72.5 | 83.2 | 77.7 | 61.5 | 73.0 | 67.2 | 76.5 | 86.6 | 81.4 | 64.2 | 75.9 | 69.9 |
| 2006 | 95.2 | 95.8 | 95.5 | 73.1 | 83.1 | 78.0 | 60.5 | 72.5 | 66.4 | 77.1 | 87.1 | 82.0 | 63.9 | 75.5 | 69.6 |
| 2007 | 96.0 | 96.6 | 96.3 | 73.9 | 83.8 | 78.7 | 60.0 | 71.5 | 65.7 | 77.6 | 87.5 | 82.4 | 63.3 | 75.0 | 69.1 |
| 2008 | 96.6 | 96.6 | 96.6 | 73.9 | 84.0 | 78.8 | 60.3 | 72.0 | 66.0 | 77.0 | 86.9 | 81.9 | 63.3 | 75.2 | 69.1 |
| 2009 | 95.6 | 97.4 | 96.5 | 77.3 | 85.1 | 81.1 | 61.5 | 73.9 | 67.6 | 80.0 | 88.1 | 84.0 | 64.1 | 76.5 | 70.2 |
| 2010 | 99.4 | 100.2 | 99.8 | 81.1 | 89.7 | 85.3 | 64.9 | 74.8 | 69.7 | 84.8 | 92.2 | 88.4 | 67.1 | 77.4 | 72.2 |
| 2011 | 102.2 | 102.4 | 102.3 | 83.3 | 91.3 | 87.2 | 66.1 | 77.6 | 71.7 | 83.7 | 91.1 | 87.3 | 69.1 | 79.7 | 74.3 |
| 2012 | 101.4 | 102.8 | 102.1 | 86.1 | 93.3 | 89.6 | 66.9 | 77.4 | 72.0 | 84.3 | 91.0 | 87.6 | 67.3 | 77.3 | 72.2 |
| 2013 | 102.0 | 102.1 | 102.0 | 88.1 | 94.6 | 91.3 | 69.0 | 79.7 | 74.3 | 86.9 | 92.0 | 89.4 | 67.6 | 77.8 | 72.6 |

Notes:

- All enrolments are reported in full-time equivalent units (FTEs), and include full-time and part-time students. Students enrolled in distance education classes are included with their appropriate grade levels.
- See explanatory note 2.

Apparent retention rate

Apparent retention measures the proportion of students who remain at school through to Year 10, 11 or 12 and is one measure of students' engagement with education. Retention is affected by legal and policy changes such as the new school leaving age legislation.

Table 4 and Figure 3 show that all apparent retention rates increased or were unchanged in 2013 apart from Year 7 to Year 10.

The apparent retention rate from Year 7 to Year 12 rose by 2.3 percentage points, from 72.0 per cent in 2012 to 74.3 per cent in 2013. The 2013 rate is over 6 percentage points higher than the period 2003 to 2009, before the implementation of the new school leaving age legislation.

The apparent retention rate from Year 10 to Year 12 increased by 0.4 percentage points from 72.2 per cent in 2012 to 72.6

per cent in 2013. The 2013 rate remains higher than in 2008 (69.1 per cent) before the implementation of the new school leaving age legislation but lower than the highest rate of the last two decades, 74.3 per cent in 2011.

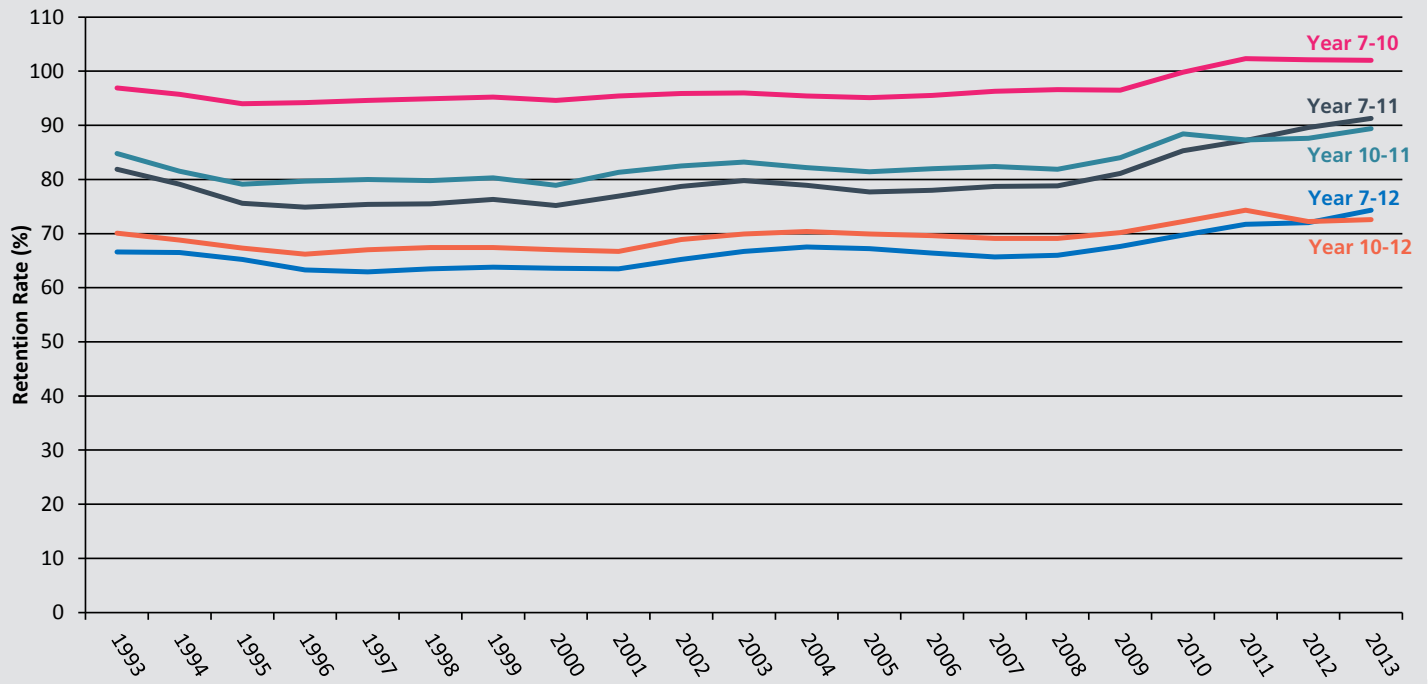
In 2013 the apparent retention rate from Year 7 to Year 11 continued its upward trend, increasing by 1.7 percentage points from 89.6 per cent in 2012 to 91.3 per cent in 2013. Since 2008, the rate has increased by 12.5 percentage points, with 2013 being the first time that the rate has risen above 90.0 per cent.

By gender, the apparent retention rates of girls and boys show a significant difference in Year 7 to Year 12 and Year 10 to Year 12. Girls are significantly more likely to remain at school until Year 12 than boys, with apparent retention rates for girls over 10 percentage points higher than for boys.



Figure 3

Apparent retention (%) in NSW government schools, 1993-2013



Government and non-government schools

Table 6 shows the number of government and non-government schools offering primary and secondary education. The number of non-government schools offering primary education has remained stable in 2013, while schools offering secondary education increased by one in 2013. For government schools, the number of schools offering primary education decreased by five from 1,689 in 2012 to 1,684 in 2013, while schools offering secondary education was unchanged.

Table 6

Number of schools offering primary and secondary education by sector, 2003-2013

| Year | Government | | Non-Government | |
|-------------|--------------|------------|----------------|------------|
| | Primary | Secondary | Primary | Secondary |
| 2003 | 1,715 | 432 | 726 | 357 |
| 2004 | 1,718 | 434 | 730 | 359 |
| 2005 | 1,718 | 435 | 728 | 370 |
| 2006 | 1,711 | 437 | 728 | 372 |
| 2007 | 1,709 | 435 | 728 | 383 |
| 2008 | 1,708 | 435 | 729 | 384 |
| 2009 | 1,700 | 436 | 727 | 383 |
| 2010 | 1,696 | 436 | 730 | 382 |
| 2011 | 1,697 | 436 | 728 | 388 |
| 2012 | 1,689 | 436 | 727 | 382 |
| 2013 | 1,684 | 436 | 727 | 383 |

Source: Australian Bureau of Statistics, Schools Australia 2013; Table 35a.
Notes: Combined/central schools which have both K-6 and Yr7-10 enrolments are included in both primary and secondary schools count.



Government preschool

Enrolments in government preschools increased slightly from 4,424 in 2012 to 4,433 in 2013. FTE enrolments fell by 89.6 (3.6 percentage points) from 2,460.7 in 2012 to 2,371.1 in 2013.

Aboriginal preschool enrolments have fallen by 44 students (7.3 percentage points), from 599 in 2012 to 555 in 2013. FTE enrolments also fell in 2013 by 52.9, with the percentage of Aboriginal FTE enrolments as a total of all preschool FTE enrolments declining by 1.6 percentage points from 15.4 per cent in 2012 to 13.8 per cent in 2013.

Early intervention preschool children

Children enrolled in an early intervention class at a NSW government school were included in the government school census for the first time in 2012. Early Intervention classes provide early childhood education in a preschool setting for children with a disability.

Enrolments in early intervention classes fell by 59 students from 743 in 2012 to 684 in 2013.

Table 7

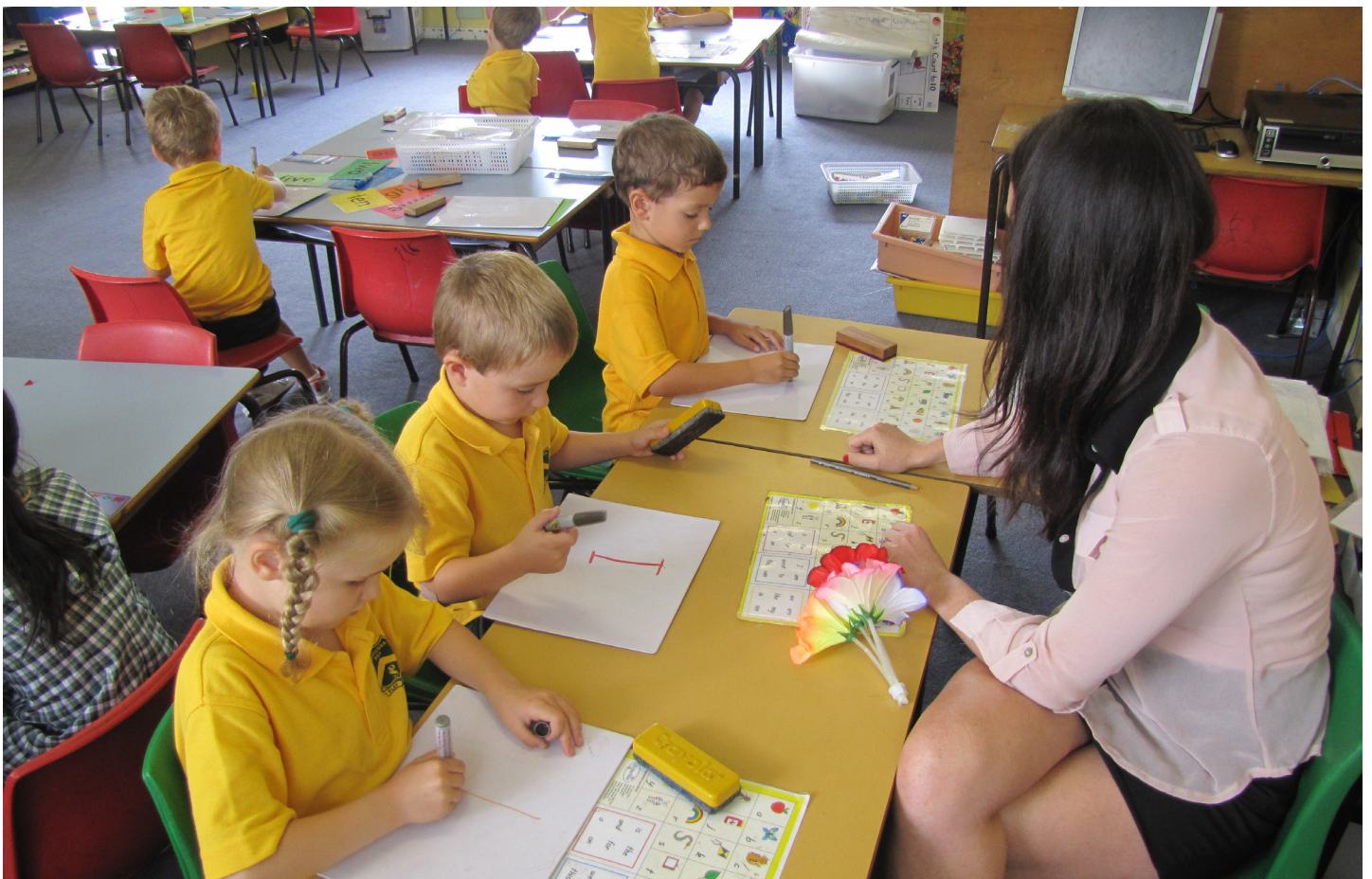
Students in government preschools, head count and full-time equivalence (FTE), 2002-2013

| Year | All Students | | Aboriginal and Torres Strait Islander Students | | |
|-------------|--------------|----------------|--|--------------|----------------|
| | Students | FTE | Students | FTE | % of Total FTE |
| 2002 | 3,902 | 2,271.4 | 362 | 235.0 | 10.3% |
| 2003 | 3,784 | 2,164.9 | 348 | 218.5 | 10.1% |
| 2004 | 3,770 | 2,203.0 | 284 | 196.5 | 8.9% |
| 2005 | 4,307 | 2,481.6 | 434 | 275.4 | 11.1% |
| 2006 | 4,273 | 2,444.7 | 422 | 275.2 | 11.3% |
| 2007 | 4,239 | 2,422.6 | 404 | 262.3 | 10.8% |
| 2008 | 4,285 | 2,516.9 | 409 | 269.5 | 10.7% |
| 2009 | 4,291 | 2,455.5 | 491 | 317.7 | 12.9% |
| 2010 | 4,325 | 2,498.6 | 493 | 315.1 | 12.6% |
| 2011 | 4,416 | 2,484.9 | 507 | 328.7 | 13.2% |
| 2012 | 4,424 | 2,460.7 | 599 | 379.9 | 15.4% |
| 2013 | 4,433 | 2,371.1 | 555 | 327.0 | 13.8% |

Table 8

Students in government early intervention programs, head count and full-time equivalence (FTE), 2013

| Year | All Students | | Aboriginal and Torres Strait Islander Students | | |
|-------------|--------------|--------------|--|-------------|----------------|
| | Students | FTE | Students | FTE | % of Total FTE |
| 2012 | 743 | 151.9 | 68 | 13.0 | 8.6% |
| 2013 | 684 | 147.7 | 76 | 14.8 | 10.0% |



Explanatory Notes:

1. Mid-year census

The Census is used for state and federal planning and accountability, including reporting requirements under the NSW Education Act 1990 and the National Education Agreement 2012. Data contribute to the National School Statistics Collection (NSSC) which is collated by the Australian Bureau of Statistics (ABS) from state and territory student, school and staffing data. Preschool data contribute to the ABS Early Childhood Education and Care (ECEC) collection.

2. Apparent retention rates

Retention rates are 'apparent' as they do not track individual students through their final years of secondary schooling. What they measure is the ratio of the total number of full-time school students in a designated year (e.g. Year 12 in 2013) divided by the total number of full-time students in a previous year (e.g. Year 7 in 2008). This would be the Year 7 to 12 apparent retention rate in 2013.

Care should be taken in the interpretation of apparent retention rates, which can exceed 100%, because the method of calculation does not take into account a range of factors such as migration, interstate movements of students, transfers to and from non-government schools, part-time schooling, students repeating a year of schooling, or students pursuing other education and training pathways.

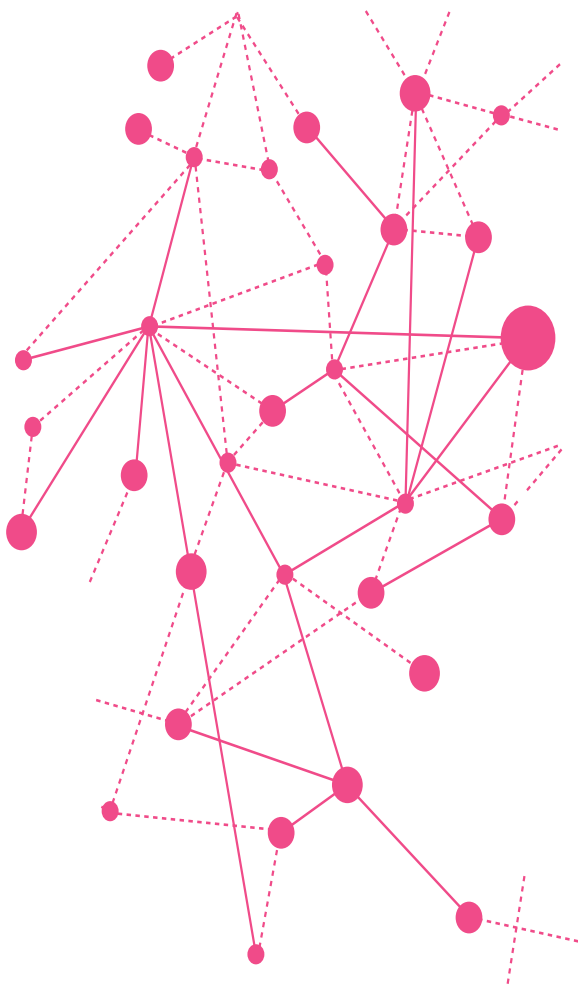
Further Information:

Each year the Australian Bureau of Statistics releases full publications and datacubes of government and non-government school enrolments for all states and territories.

www.abs.gov.au

ABS publication details:

- 4221.0 - Schools Australia, 2013
- 4240.0 - Preschool Education Australia, 2013



Contact Details

For more information about the Centre for Education Statistics and Evaluation, please contact us:

E cese@det.nsw.edu.au

W www.cese.nsw.gov.au

Centre for Education Statistics and Evaluation
Office of Education
GPO Box 33
Sydney NSW 2001
Australia
T 02 9561 8000
E cese@det.nsw.edu.au
www.cese.nsw.gov.au

© June 2014
NSW Department of Education and Communities



**Education &
Communities**
Office of Education

