

In Brief

Midyear Census 2002

INTRODUCTION

In Brief summarises the results of the census of students in NSW government schools undertaken on Friday, 2nd August 2002, and the census of NSW non-government schools undertaken by the Commonwealth Department of Education, Science and Training.

2002	
NSW GOVERNMENT SCHOOLS	
Primary schools	1,631
Separate Infants schools	18
Central schools	60
Community schools	5
High schools	394
Schools for specific purposes (SSPs)	106
Environmental education centres	23
Total government schools	2,237
Preschools	
Attached to primary/infants schools	78
Separate preschools	1
Total preschools	79
NSW NON-GOVERNMENT SCHOOLS	
Primary schools	522
Secondary schools	145
Primary/secondary schools	206
Special schools	31
Total non-government schools	904
FULL-TIME EQUIVALENT (FTE) ENROLMENTS IN NSW GOVERNMENT SCHOOLS	
Primary enrolments	447,897.0
Secondary enrolments	302,988.0
SSP enrolments	3,915.0
Total enrolments	754,800.0
Aboriginal and Torres Strait Islander Students	
Total A&TSI enrolments	32,874.8
Percent A&TSI enrolments	4.4%
Part-time Students	
Number of part-time students	2,455.0
FTE enrolments	1,100.0
Preschool Students	
Number of preschool students	3,902.0
FTE enrolments	2,271.4

TABLE 1 AND FIGURE 1

ENROLMENTS (FTE) IN NSW GOVERNMENT SCHOOLS, 1961-2002

- Total full-time equivalent enrolments decreased by 1,940.4 from 756,740.4 in 2001 (0.3 percent).
- Total primary enrolments fell by 3,199 from 451,096.0 in 2001. This represents a 0.7 percent decrease.
- Total secondary enrolments increased by 1,216.6 from 301,771.4 representing a 0.4 percent increase.

TABLE 2 AND FIGURE 2

ENROLMENTS (FTE) BY DISTRICT AND YEAR OF SCHOOLING IN NSW GOVERNMENT SCHOOLS, MIDYEAR 2002

- Central Coast District enrolled the most students, with 32,512.7 FTE enrolments.
- Campbelltown District enrolled the most primary students (19,275) and Fairfield enrolled the most secondary students (13,941.6).
- Deniliquin District had the fewest students, with 5,068.6 FTE enrolments.
- In 2002, Newcastle District experienced the greatest increase in enrolments, up by 348.8 enrolments (1.5 percent).
- The greatest decrease in enrolments occurred in Dubbo District with 336.0 fewer enrolments (2.7 percent).
- The Kindergarten intake in 2002 was 62,904, down by 229 (0.4 percent) from 63,133 in 2001.
- Year 7 enrolments totalled 55,046 representing 87.9 percent of the 2001 Year 6 enrolment.

TABLE 3 AND FIGURE 3

ENROLMENTS (FTE) OF INDIGENOUS STUDENTS BY DISTRICT AND YEAR OF SCHOOLING IN NSW GOVERNMENT SCHOOLS, MIDYEAR 2002

- Enrolments of Indigenous students increased by 6.7 percent from 30,825.2 in 2001.
- Indigenous students represented 4.4 percent of all enrolments.
- Dubbo District had the greatest number of Indigenous students, with 2,991.2 FTE enrolments.
- Moree District had the greatest proportion of Indigenous students, with 32.2 percent of all enrolments.

TABLE 4 AND FIGURE 4
APPARENT RETENTION IN NSW GOVERNMENT SCHOOLS,
1981-2002

- Apparent retention from Year 7 to Year 12 was 65.2 percent in 2002, an increase of 1.7 percent from 2001.
- Apparent retention Year 7-12 for males in 2002 (59.9 percent) remains over 10 percentage points lower than for females (70.7 percent). For both sexes, apparent retention rates have been fairly steady for the last 5 years.
- The Year 7-10 apparent retention rate in 2002 was 95.9 percent, 0.5 percentage points higher than 95.4 in 2001.

TABLE 5
ENROLMENTS (FTE) BY YEAR OF SCHOOLING IN NSW NON-
GOVERNMENT SCHOOLS, MIDYEAR 2002

Primary enrolments	179,398.3
Secondary enrolments	170,904.1
SSP enrolments	1,152.6
Total enrolments	351,455.0

- Total enrolment in NSW non-government schools increased by 7,227 or 2.1 percent since 2001.
- Total primary enrolments increased by 2,269.8 (1.3 percent).
- Total secondary enrolments increased by 4,913.4 (3.0 percent).
- Total enrolments in special schools increased by 43.8 (4.0 percent).

TABLE 6 AND FIGURE 5
ENROLMENTS (FTE) IN NSW GOVERNMENT AND NON-
GOVERNMENT SCHOOLS, 1901-2002

- Enrolments in non-government schools represented 31.8 percent of all enrolments in NSW schools, compared with 31.3 percent in 2001.
- The proportion of enrolments in government schools fell by 0.5 percent which is smaller than the falls of 0.8 and 0.6 percent in the preceding two years.

TABLE 7
HEAD COUNT AND FULL-TIME EQUIVALENCE OF PART-TIME
STUDENTS IN NSW GOVERNMENT SCHOOLS BY DISTRICT AND
YEAR OF SCHOOLING, MIDYEAR 2002

- The number of part-time students fell by 12.6 percent from 2,809 in 2001 to 2,455 in 2002.
- The FTE enrolments of part-time students decreased by 26.4 percent from 1,494.4 in 2001 to 1,100.0 in 2002.
- The decrease in part-time student enrolments has occurred largely in Year 11, and reflects the change in definition of full-time study for Year 11 (10 units instead of 12) under the new HSC.

TABLE 8
HEAD COUNT AND FULL-TIME EQUIVALENCE OF STUDENTS IN
NSW GOVERNMENT PRESCHOOLS BY DISTRICT, MIDYEAR
2002

- Enrolments in government preschools decreased by 4.3 percent to 3,902 from 4,077 in 2001.
- FTE enrolments in government preschools decreased by 4.9 percent to 2,271.4.
- Indigenous preschool enrolments rose from 7.7 percent of FTE enrolments in 2001 to 10.3 percent in 2002.
- Mount Druitt District had the greatest number of students (496) in government preschools.

FURTHER INFORMATION

Additional information about schools and students in New South Wales will be available in *Statistical Bulletin: Schools and Students in New South Wales, 2002*.

Statistical publications produced by the Department of Education and Training can be obtained on the Internet at:

http://www.det.nsw.edu.au/reports_stats/stats

For further information regarding school and student statistics, please contact:

School Statistics Unit
 Strategic Information and Planning Directorate
 Telephone: 02 9561 8342
 Facsimile: 02 9561 8055

Table 1. Enrolments (FTE) in NSW Government Schools, 1961-2002

Year	Primary	Secondary	SSP	Total
1961	441,366	169,517		610,883
1962	445,154	178,204		623,358
1963	444,252	181,999		626,251
1964	449,342	184,075		633,417
1965	457,158	196,273		653,431
1966	468,382	204,103		672,485
1967	479,605	221,184		700,789
1968	489,718	236,901		726,619
1969	497,373	248,442		745,815
1970	503,547	257,874		761,421
1971	504,110	267,603		771,713
1972	502,398	277,751		780,149
1973	495,112	281,988		777,100
1974	490,929	286,931		777,860
1975	490,769	298,357		789,126
1976	496,314	303,409		799,723
1977	506,661	303,049		809,710
1978	512,791	299,149		811,940
1979	516,807	290,795		807,602
1980	515,769	283,352		799,121
1981	507,094	283,481		790,575
1982	495,207	287,077		782,284
1983	477,811	300,793		778,604
1984	454,073	311,491	5,360	770,924
1985	438,953	316,650	5,414	761,017
1986	431,503	318,353	5,401	755,257
1987	431,403	318,657	5,024	755,084
1988	434,811	318,484	4,626	757,921
1989	434,098	310,765	4,400	749,263
1990	434,814	304,006	4,366	743,186
1991	438,218	304,087	4,112	746,417
1992	444,059	308,752	4,041	756,852
1993	445,238.0	308,909.2	3,901.0	758,048.2
1994	445,599.0	306,716.6	3,798.0	756,113.6
1995	446,722.0	305,395.6	3,789.0	755,906.6
1996	450,465.0	306,823.3	3,749.0	761,037.3
1997	451,560.0	308,922.7	3,690.0	764,172.7
1998	452,565.0	309,136.7	3,673.0	765,374.7
1999	453,454.0	308,116.1	3,762.0	765,332.1
2000	454,363.0	303,681.1	3,792.0	761,836.1
2001	451,096.0	301,771.4	3,873.0	756,740.4
2002	447,897.0	302,988.0	3,915.0	754,800.0

Notes: Since 1993 some students have enrolled part-time. All enrolments are reported in full-time equivalent units (FTEs) and include full-time and part-time students.
Until 1984 students enrolled in schools for specific purposes (SSPs) are included in primary and secondary enrolment data, although until 1962 some of these students are not included at all.

Table 2. Enrolments (FTE) by District and Year of Schooling in NSW Government Schools, Midyear 2002

District	Primary									SSP
	Kinder	Year 1	Year 2	Year 3	Year 4	Year 5	Year 6	Support	Total	Total
Albury	892	896	931	936	962	859	961	23	6460	85
Armidale	690	726	756	754	764	782	808	67	5347	0
Bankstown	1833	1694	1827	1745	1669	1685	1621	187	12261	126
Batemans Bay	1100	1180	1211	1205	1286	1270	1362	65	8679	10
Bathurst	909	897	877	953	887	927	960	89	6499	60
Blacktown	2049	2027	1971	2005	1951	1950	2021	302	14276	44
Bondi	1486	1399	1335	1321	1371	1326	1262	104	9604	92
Broken Hill	424	445	439	421	463	437	468	26	3123	0
Campbelltown	2664	2709	2845	2705	2714	2613	2685	340	19275	218
Central Coast	2514	2641	2716	2605	2799	2775	2866	205	19121	241
Clarence/Coffs Harbour	1280	1304	1395	1490	1523	1541	1492	74	10099	23
Deniliquin	408	456	407	419	460	463	436	12	3061	0
Dubbo	1003	1029	1004	1022	974	977	984	138	7131	24
Fairfield	2338	2331	2378	2323	2262	2283	2172	250	16337	221
Granville	2213	2070	2016	2003	2078	1939	1919	242	14480	143
Griffith	694	672	655	651	674	694	704	47	4791	60
Hornsby	2154	2192	2168	2210	2280	2264	2405	56	15729	154
Lake Macquarie	2367	2426	2524	2515	2538	2520	2425	173	17488	66
Lismore	852	845	871	957	910	961	945	76	6417	40
Liverpool	2653	2657	2690	2604	2567	2503	2498	294	18466	456
Maitland	1614	1644	1700	1669	1648	1600	1572	96	11543	46
Moree	582	576	583	590	559	535	540	72	4037	0
Mount Druitt	2430	2477	2479	2441	2402	2302	2372	371	17274	209
Newcastle	1883	1650	1702	1737	1749	1751	1862	115	12449	148
Northern Beaches	2472	2493	2491	2309	2182	2288	2262	98	16595	115
Orange	1036	1028	1035	1030	1055	999	1038	85	7306	56
Parramatta	2217	2109	2100	2086	2049	2017	2162	154	14894	213
Penrith	1968	1964	2051	2026	1944	2024	2043	197	14217	117
Port Jackson	1567	1506	1512	1446	1478	1409	1368	58	10344	55
Port Macquarie	1115	1146	1186	1178	1227	1249	1268	92	8461	0
Queanbeyan	1063	1003	1095	1065	1130	1036	1044	59	7495	36
Ryde	2347	2265	2398	2242	2210	2052	1924	101	15539	86
Shellharbour	1971	1994	2067	2173	2091	2128	2070	143	14637	153
St George	1869	1895	1817	1655	1739	1692	1707	144	12518	197
Sutherland	1866	1935	1982	1966	1996	2021	2053	87	13906	137
Tamworth	1056	1130	1117	1148	1202	1084	1183	122	8042	64
Taree	1379	1351	1559	1583	1617	1577	1602	101	10769	0
Tweed Heads/Ballina	1230	1230	1286	1312	1326	1391	1361	56	9192	6
Wagga Wagga	1005	987	1032	967	1087	1057	997	80	7212	82
Wollongong	1711	1825	1866	1874	1827	1830	1760	130	12823	132
State	62,904	62,804	64,074	63,341	63,650	62,811	63,182	5,131	447,897	3,915

Notes: Students in distance education and opportunity classes (OC) are included with their appropriate grade levels. Students enrolled at the Distance Education Support Unit are included with secondary support classes in Port Jackson district.

Table 2. Enrolments (FTE) by District and Year of Schooling in NSW Government Schools, Midyear 2002

District	Secondary								District Total
	Year 7	Year 8	Year 9	Year 10	Year 11	Year 12	Support	Total	
Albury	897.0	914.0	892.0	819.0	640.0	563.3	44.0	4769.3	11,314.3
Armidale	740.0	763.0	793.0	703.0	613.4	502.8	61.0	4176.2	9,523.2
Bankstown	1086.0	1068.0	1111.0	1189.0	968.0	924.3	295.0	6641.3	19,028.3
Batemans Bay	1188.0	1191.0	1195.0	1137.0	865.1	671.5	92.0	6339.6	15,028.6
Bathurst	904.0	837.0	952.0	837.0	657.9	570.9	107.0	4865.8	11,424.8
Blacktown	1477.0	1385.0	1452.0	1251.0	939.5	790.7	132.0	7427.2	21,747.2
Bondi	1041.0	1105.0	1169.0	1287.0	1167.7	1088.1	84.0	6941.8	16,637.8
Broken Hill	421.0	489.0	437.0	378.0	301.4	209.1	52.0	2287.5	5,410.5
Campbelltown	2008.0	2054.0	1991.0	1983.0	1473.0	1173.3	260.0	10942.3	30,435.3
Central Coast	2684.0	2439.0	2423.0	2254.0	1677.4	1408.3	265.0	13150.7	32,512.7
Clarence/Coffs Harbour	1636.0	1537.0	1460.0	1389.0	1207.0	989.5	110.0	8328.5	18,450.5
Deniliquin	401.0	413.0	359.0	334.0	266.2	234.4	0.0	2007.6	5,068.6
Dubbo	960.0	973.0	898.0	880.0	675.1	566.7	149.0	5101.8	12,256.8
Fairfield	2227.0	2331.0	2321.0	2414.0	2164.8	1854.8	629.0	13941.6	30,499.6
Granville	1195.0	1332.0	1323.0	1300.0	1262.2	1110.0	169.0	7691.2	22,314.2
Griffith	727.0	675.0	621.0	615.0	447.4	352.0	14.0	3451.4	8,302.4
Hornsby	2015.0	2044.0	2118.0	2118.0	1993.3	1831.9	22.0	12142.2	28,025.2
Lake Macquarie	2048.0	1961.0	2014.0	1891.0	1292.7	1007.0	236.0	10449.7	28,003.7
Lismore	853.0	902.0	877.0	827.0	700.2	577.6	60.0	4796.8	11,253.8
Liverpool	2173.0	2187.0	2145.0	2094.0	1810.4	1440.4	409.0	12258.8	31,180.8
Maitland	1425.0	1338.0	1333.0	1308.0	810.1	671.2	115.0	7000.3	18,589.3
Moree	541.0	514.0	501.0	433.0	323.8	236.9	55.0	2604.7	6,641.7
Mount Druitt	1672.0	1615.0	1642.0	1583.0	1424.6	1203.8	462.0	9602.4	27,085.4
Newcastle	2024.0	1976.0	1949.0	1932.0	1488.6	1266.4	108.0	10744.0	23,341.0
Northern Beaches	1533.0	1404.0	1491.0	1520.0	1455.9	1184.7	65.0	8653.6	25,363.6
Orange	970.0	865.0	863.0	836.0	658.0	538.0	143.0	4873.0	12,235.0
Parramatta	1978.0	1966.0	2028.0	1941.0	1762.0	1605.7	197.0	11477.7	26,584.7
Penrith	1575.0	1560.0	1614.0	1614.0	1193.7	1030.9	204.0	8791.6	23,125.6
Port Jackson	1038.0	915.0	956.0	998.0	1060.3	858.6	381.0	6206.9	16,605.9
Port Macquarie	1269.0	1258.0	1212.0	1161.0	803.1	653.4	109.0	6465.5	14,926.5
Queanbeyan	839.0	789.0	841.0	756.0	595.2	504.8	120.0	4445.0	11,976.0
Ryde	1401.0	1399.0	1348.0	1444.0	1620.3	1466.4	297.0	8975.7	24,600.7
Shellharbour	1886.0	1858.0	1809.0	1762.0	1204.0	1023.5	163.0	9705.5	24,495.5
St George	1723.0	1769.0	1668.0	1776.0	1732.6	1584.4	217.0	10470.0	23,185.0
Sutherland	2064.0	2114.0	2044.0	1953.0	1706.4	1505.0	90.0	11476.4	25,519.4
Tamworth	1045.0	1006.0	1063.0	1024.0	777.6	669.9	133.0	5718.5	13,824.5
Taree	1451.0	1349.0	1356.0	1350.0	932.2	779.9	169.0	7387.1	18,156.1
Tweed Heads/Ballina	1286.0	1204.0	1213.0	1290.0	995.2	848.0	118.0	6954.2	16,152.2
Wagga Wagga	973.0	925.0	901.0	859.0	682.4	576.9	81.0	4998.3	12,292.3
Wollongong	1672.0	1520.0	1565.0	1530.0	1276.6	1004.7	158.0	8726.3	21,681.3
State	55,046.0	53,944.0	53,948.0	52,770.0	43,625.3	37,079.7	6,575.0	302,988.0	754,800.0

Notes: All enrolments are reported in full-time equivalents (FTEs) and include full-time and part-time students.
See Table 7 for data on part-time students.
Students in distance education are included with their appropriate grade levels. Students enrolled at the Distance Education Support Unit are included with secondary support classes in Port Jackson district.
Students enrolled in Intensive English Centres (1,455.0 FTE) are included with secondary support classes.

Table 3. Enrolments (FTE) of Aboriginal and Torres Strait Islander Students by District and Year of Schooling in NSW Government Schools, Midyear 2002

District	Primary								SSP	
	Kinder	Year 1	Year 2	Year 3	Year 4	Year 5	Year 6	Support	Total	Total
Albury	31	48	41	28	38	34	32	3	255	8
Armidale	96	92	96	77	92	104	88	24	669	0
Bankstown	24	22	20	22	21	14	17	2	142	1
Batemans Bay	72	91	79	63	78	57	68	6	514	0
Bathurst	50	47	54	40	37	46	32	5	311	3
Blacktown	62	67	61	63	61	58	68	23	463	3
Bondi	60	46	41	36	50	43	40	7	323	8
Broken Hill	63	92	78	70	89	79	78	7	556	0
Campbelltown	97	110	102	97	90	73	89	32	690	25
Central Coast	66	81	78	63	78	72	87	8	533	30
Clarence/Coffs Harbour	94	115	119	93	111	104	99	8	743	16
Deniliquin	28	23	19	25	27	21	18	1	162	0
Dubbo	306	310	272	257	238	230	237	65	1915	17
Fairfield	46	43	51	48	53	58	41	3	343	17
Granville	22	13	23	15	15	15	15	1	119	1
Griffith	71	76	64	61	73	48	65	17	475	9
Hornsby	4	3	10	2	8	6	6	1	40	0
Lake Macquarie	105	112	124	119	115	117	113	15	820	6
Lismore	103	98	90	89	84	92	80	9	645	9
Liverpool	56	68	81	67	75	72	59	12	490	40
Maitland	79	68	72	70	78	69	66	15	517	3
Moree	204	206	208	199	193	181	165	42	1398	0
Mount Druitt	179	184	166	149	171	139	144	61	1193	21
Newcastle	68	69	55	62	56	59	68	6	443	2
Northern Beaches	4	7	5	1	6	7	8	21	59	3
Orange	116	131	97	97	88	81	93	20	723	8
Parramatta	37	29	25	31	29	22	26	4	203	5
Penrith	68	66	64	72	73	74	53	20	490	16
Port Jackson	54	69	52	70	74	68	80	1	468	11
Port Macquarie	140	146	144	104	118	110	107	29	898	0
Queanbeyan	43	39	39	35	34	26	28	4	248	0
Ryde	2	2	1	6	3	2	4	0	20	0
Shellharbour	126	110	119	99	92	104	102	27	779	6
St George	12	11	14	7	12	10	11	3	80	10
Sutherland	14	10	13	14	9	19	14	4	97	4
Tamworth	145	145	151	143	132	133	131	31	1011	18
Taree	104	94	97	91	109	89	87	15	686	0
Tweed Heads/Ballina	98	79	101	89	68	93	77	7	612	0
Wagga Wagga	80	94	82	69	60	57	48	11	501	6
Wollongong	57	62	51	57	56	63	61	12	419	6
State	3,086	3,178	3,059	2,800	2,894	2,749	2,705	582	21,053	312
As percent of year	4.9%	5.1%	4.8%	4.4%	4.5%	4.4%	4.3%	11.3%	4.7%	8.0%

Notes: Students in distance education and support classes (OC) are included with their appropriate grade levels. Students enrolled at the Distance Education Support Unit are included with secondary support classes in Port Jackson district.

Table 3. Enrolments (FTE) of Aboriginal and Torres Strait Islander Students by District and Year of Schooling in NSW Government Schools, Midyear 2002

District	Secondary								District Total	As % of district
	Year 7	Year 8	Year 9	Year 10	Year 11	Year 12	Support	Total		
Albury	34.0	31.0	30.0	23.0	6.0	1.0	4.0	129.0	392.0	3.5%
Armidale	80.0	80.0	88.0	52.0	32.8	15.8	20.0	368.6	1,037.6	10.9%
Bankstown	19.0	12.0	10.0	7.0	7.0	5.0	2.0	62.0	205.0	1.1%
Batemans Bay	74.0	70.0	66.0	47.0	30.8	24.0	6.0	317.8	831.8	5.5%
Bathurst	43.0	35.0	29.0	32.0	20.0	11.0	12.0	182.0	496.0	4.3%
Blacktown	56.0	37.0	59.0	39.0	18.0	10.8	12.0	231.8	697.8	3.2%
Bondi	48.0	34.0	42.0	34.0	24.0	12.8	8.0	202.8	533.8	3.2%
Broken Hill	61.0	69.0	66.0	40.0	17.6	8.0	29.0	290.6	846.6	15.6%
Campbelltown	73.0	49.0	48.0	59.0	19.0	19.0	26.0	293.0	1,008.0	3.3%
Central Coast	77.0	73.0	61.0	50.0	32.0	14.0	12.0	319.0	882.0	2.7%
Clarence/Coffs Harbour	103.0	87.0	67.0	54.0	33.8	31.4	11.0	387.2	1,146.2	6.2%
Deniliquin	24.0	14.0	8.0	11.0	6.0	3.0	0.0	66.0	228.0	4.5%
Dubbo	239.0	233.0	195.0	159.0	102.5	48.7	82.0	1059.2	2,991.2	24.4%
Fairfield	28.0	25.0	20.0	18.0	8.6	11.9	1.0	112.5	472.5	1.5%
Granville	11.0	14.0	3.0	6.0	3.0	5.0	1.0	43.0	163.0	0.7%
Griffith	67.0	61.0	51.0	41.0	16.2	6.2	5.0	247.4	731.4	8.8%
Hornsby	5.0	2.0	4.0	4.0	4.0	0.0	0.0	19.0	59.0	0.2%
Lake Macquarie	82.0	115.0	99.0	81.0	36.4	20.6	25.0	459.0	1,285.0	4.6%
Lismore	61.0	68.0	71.0	44.0	21.4	24.2	9.0	298.6	952.6	8.5%
Liverpool	45.0	68.0	34.0	42.0	20.2	13.2	17.0	239.4	769.4	2.5%
Maitland	54.0	69.0	58.0	35.0	19.0	7.0	7.0	249.0	769.0	4.1%
Moree	166.0	174.0	168.0	113.0	68.2	34.6	16.0	739.8	2,137.8	32.2%
Mount Druitt	238.0	226.0	219.0	131.0	39.0	25.6	82.0	960.6	2,174.6	8.0%
Newcastle	58.0	76.0	64.0	42.0	31.0	12.4	6.0	289.4	734.4	3.1%
Northern Beaches	11.0	5.0	8.0	7.0	5.0	5.0	2.0	43.0	105.0	0.4%
Orange	95.0	89.0	84.0	61.0	43.0	22.2	34.0	428.2	1,159.2	9.5%
Parramatta	19.0	19.0	22.0	12.0	3.0	3.0	4.0	82.0	290.0	1.1%
Penrith	46.0	53.0	48.0	24.0	25.0	11.0	10.0	217.0	723.0	3.1%
Port Jackson	37.0	44.0	54.0	34.0	17.0	9.0	7.0	202.0	681.0	4.1%
Port Macquarie	112.0	121.0	98.0	88.0	29.4	20.6	23.0	492.0	1,390.0	9.3%
Queanbeyan	31.0	26.0	29.0	19.0	11.0	4.0	7.0	127.0	375.0	3.1%
Ryde	4.0	4.0	4.0	4.0	5.0	5.6	2.0	28.6	48.6	0.2%
Shellharbour	78.0	84.0	75.0	60.0	27.9	21.8	19.0	365.7	1,150.7	4.7%
St George	19.0	14.0	13.0	8.0	7.0	4.0	1.0	66.0	156.0	0.7%
Sutherland	16.0	21.0	18.0	18.0	13.0	5.0	2.0	93.0	194.0	0.8%
Tamworth	127.0	117.0	122.0	83.0	39.8	36.0	23.0	547.8	1,576.8	11.4%
Taree	90.0	92.0	76.0	73.0	38.2	22.0	16.0	407.2	1,093.2	6.0%
Tweed Heads/Ballina	81.0	74.0	64.0	66.0	35.4	26.4	13.0	359.8	971.8	6.0%
Wagga Wagga	55.0	58.0	40.0	43.0	16.6	16.0	10.0	238.6	745.6	6.1%
Wollongong	57.0	46.0	47.0	48.0	27.0	11.2	9.0	245.2	670.2	3.1%
State	2,624.0	2,589.0	2,362.0	1,812.0	959.8	588.0	575.0	11,509.8	32,874.8	4.4%
As percent of year	4.8%	4.8%	4.4%	3.4%	2.2%	1.6%	8.7%	3.8%	4.4%	

Notes: All enrolments are reported in full-time equivalent units (FTEs) and include full-time and part-time students. Students in distance education are included with their appropriate grade levels. Students enrolled at the Distance Education Support Unit are included with secondary support classes in Port Jackson district.

Table 4. Apparent Retention in NSW Government Schools, 1981-2002

Enrolments (FTE)																		
Year	Year 7			Year 8			Year 9			Year 10			Year 11			Year 12		
	Male	Female	Total	Male	Female	Total	Male	Female	Total	Male	Female	Total	Male	Female	Total	Male	Female	Total
1981	32,540.0	31,103.0	63,643.0	31,727.0	30,250.0	61,977.0	30,493.0	29,465.0	59,958.0	26,312.0	53,300.0	22,444.0	10,325.0	12,119.0	22,444.0	8,864.0	10,110.0	18,974.0
1982	33,007.0	31,367.0	64,374.0	32,577.0	31,181.0	63,758.0	30,637.0	29,531.0	60,168.0	27,112.0	26,605.0	53,717.0	10,917.0	12,511.0	23,428.0	8,371.0	9,800.0	18,251.0
1983	34,980.0	33,392.0	68,372.0	32,933.0	31,259.0	64,192.0	30,538.0	29,538.0	62,076.0	27,974.0	27,050.0	55,024.0	13,277.0	14,057.0	27,334.0	9,430.0	10,173.0	20,153.0
1984	35,659.0	34,004.0	69,663.0	35,014.0	33,320.0	68,334.0	32,163.0	30,677.0	62,840.0	28,960.0	28,080.0	57,040.0	13,780.0	14,656.0	28,436.0	10,711.0	11,649.0	22,360.0
1985	33,997.0	32,034.0	66,031.0	35,696.0	33,909.0	69,605.0	34,205.0	32,826.0	67,031.0	29,481.0	28,264.0	57,745.0	15,133.0	15,727.0	30,860.0	10,605.0	11,785.0	22,390.0
1986	31,921.0	29,953.0	61,874.0	34,008.0	32,067.0	66,075.0	34,895.0	33,313.0	68,208.0	31,269.0	30,500.0	61,769.0	15,841.0	16,485.0	32,326.0	11,944.0	12,960.0	24,904.0
1987	30,806.0	28,810.0	59,616.0	32,055.0	30,076.0	62,131.0	33,561.0	31,657.0	65,218.0	32,532.0	31,284.0	63,816.0	18,286.0	19,454.0	37,740.0	12,787.0	13,915.0	26,702.0
1988	29,385.0	27,848.0	57,233.0	30,866.0	29,052.0	59,918.0	31,864.0	29,871.0	61,735.0	31,191.0	30,084.0	61,275.0	20,978.0	22,192.0	43,170.0	14,876.0	16,498.0	31,374.0
1989	28,726.0	27,124.0	55,850.0	29,263.0	27,910.0	57,173.0	30,504.0	28,844.0	59,348.0	29,661.0	28,367.0	58,028.0	20,117.0	22,079.0	42,196.0	16,061.0	18,112.0	34,173.0
1990	28,234.0	26,663.0	54,897.0	28,627.0	27,053.0	55,680.0	29,053.0	27,688.0	56,741.0	28,747.0	27,549.0	56,296.0	20,116.0	21,890.0	42,006.0	15,738.0	18,197.0	33,935.0
1991	27,943.0	26,871.0	54,814.0	28,253.0	26,863.0	55,116.0	28,544.0	27,046.0	55,590.0	27,748.0	26,657.0	54,405.0	21,842.0	22,685.0	44,527.0	16,305.0	18,515.0	34,820.0
1992	28,176.0	26,860.0	55,036.0	28,150.0	27,011.0	55,161.0	28,380.0	27,069.0	55,449.0	27,606.0	26,307.0	53,913.0	22,448.0	23,330.0	45,778.0	18,325.0	20,044.0	38,369.0
1993	29,193.0	27,649.0	56,842.0	28,199.0	26,890.0	55,089.0	28,018.0	27,009.0	55,027.0	27,062.4	26,155.0	53,217.4	22,465.4	23,276.3	45,741.7	18,189.8	19,932.3	38,122.1
1994	29,639.0	27,993.0	57,632.0	29,101.0	27,622.0	56,723.0	27,762.0	26,668.0	54,430.0	26,646.0	25,805.9	52,451.9	20,960.5	22,437.6	43,398.1	17,573.4	19,544.2	37,117.6
1995	29,263.8	28,326.8	57,590.6	29,530.0	27,854.9	57,384.9	28,528.5	27,498.6	56,027.1	26,267.3	25,469.3	51,736.7	19,815.7	21,650.3	41,466.0	16,709.3	19,089.1	35,798.4
1996	29,023.6	27,770.9	56,794.5	29,250.2	28,284.4	57,534.6	29,258.3	27,579.7	56,838.0	27,236.7	26,329.7	53,566.4	19,768.1	21,459.3	41,227.4	16,157.3	18,556.2	34,713.5
1997	29,077.3	27,796.0	56,873.3	29,089.5	27,903.8	56,993.3	28,987.4	28,160.6	57,148.0	27,956.1	26,573.9	54,530.0	20,604.7	22,274.0	42,878.7	16,147.0	18,495.4	34,642.3
1998	28,245.0	27,187.0	55,432.0	29,097.0	27,815.0	56,912.0	28,765.0	27,638.0	56,403.0	27,542.0	27,119.0	54,661.0	20,967.6	22,551.2	43,518.8	16,757.0	19,324.9	36,081.9
1999	28,156.2	26,875.0	55,031.2	28,249.0	27,131.0	55,380.0	28,736.2	27,590.2	56,326.3	27,399.4	26,692.2	54,091.6	20,708.3	23,208.2	43,916.5	17,208.8	19,565.6	36,774.4
2000	27,497.0	26,564.0	54,061.0	28,119.0	26,948.0	55,067.0	27,954.0	27,079.5	55,033.5	27,365.2	26,456.0	53,821.2	20,380.0	22,321.1	42,702.1	16,680.8	19,957.5	36,638.3
2001	27,653.0	26,275.0	53,928.0	27,643.0	26,584.0	54,227.0	27,926.0	26,826.0	54,752.0	26,879.0	26,006.0	52,885.0	21,102.0	22,631.9	43,733.9	16,843.5	19,235.0	36,078.5
2002	28,164.0	26,882.0	55,046.0	27,639.0	26,305.0	53,944.0	27,420.0	26,528.0	53,948.0	26,852.0	25,918.0	52,770.0	21,114.4	22,510.9	43,625.3	17,421.6	19,658.1	37,079.7

Apparent Retention (%)																		
Year	Years 7-9			Years 7-10			Years 7-11			Years 7-12			Years 10-12					
	Male	Female	Total	Male	Female	Total	Male	Female	Total	Male	Female	Total	Male	Female	Total			
1981	96.3	97.2	96.7	83.3	86.2	84.7	31.1	38.8	34.9	25.5	30.9	28.1	31.1	45.6	41.6	31.0	36.5	33.7
1982	96.7	97.6	97.1	85.6	87.8	86.7	33.7	41.0	37.2	25.2	31.6	28.3	40.5	47.5	44.0	30.5	37.2	33.8
1983	97.5	98.2	97.8	88.3	89.4	88.8	41.9	46.4	44.1	29.1	35.1	32.0	49.0	52.8	50.9	34.9	40.8	37.8
1984	97.4	97.8	97.6	89.0	90.3	89.6	43.5	48.4	45.9	33.8	38.4	36.1	49.3	54.2	51.7	39.5	43.8	41.6
1985	97.8	98.3	98.0	89.3	90.1	89.7	46.5	50.6	48.5	33.5	38.9	36.2	52.3	56.0	54.1	37.9	43.6	40.7
1986	97.9	98.0	97.9	89.4	91.3	90.3	48.0	52.6	50.2	36.7	41.7	39.1	53.7	58.3	56.0	41.2	46.2	43.7
1987	98.7	98.8	98.8	91.2	92.0	91.6	52.3	58.3	55.2	38.7	44.4	41.5	58.5	63.8	61.1	43.4	49.2	46.2
1988	99.8	99.7	99.8	91.8	93.9	92.8	58.8	65.3	62.0	42.5	49.4	45.9	64.5	70.9	67.6	47.6	54.1	50.8
1989	99.0	100.1	99.6	92.9	94.7	93.8	59.2	68.9	63.9	45.0	53.3	49.1	64.5	73.4	68.9	49.4	57.9	53.5
1990	98.9	99.4	99.1	93.3	95.6	94.4	63.0	73.1	67.9	46.3	56.8	51.4	67.8	77.2	72.4	50.5	60.5	55.4
1991	99.4	99.7	99.5	94.4	95.7	95.1	70.9	78.7	74.7	51.1	61.8	56.3	76.0	82.3	79.1	55.0	65.3	60.0
1992	100.5	101.5	101.0	96.1	97.0	96.5	76.4	83.8	80.0	59.5	69.6	64.4	80.9	87.5	84.1	63.7	72.8	68.2
1993	100.3	100.5	100.4	95.9	98.1	96.9	78.2	85.8	81.9	61.9	71.6	66.6	81.4	88.5	84.8	65.6	74.8	70.1
1994	98.5	99.3	98.9	95.4	96.0	95.7	74.2	84.2	79.1	61.2	72.1	66.5	77.5	85.8	81.5	63.7	74.3	68.8
1995	97.7	99.5	98.6	93.2	94.8	94.0	70.9	80.6	75.6	59.2	71.6	65.2	74.4	83.9	79.1	61.7	73.0	67.3
1996	98.7	98.5	98.6	93.3	95.2	94.2	70.2	79.9	74.9	57.8	69.1	63.3	75.3	84.3	79.7	60.6	71.9	66.2
1997	99.1	99.4	99.2	94.3	94.9	94.6	70.6	80.6	75.4	57.3	68.9	62.9	75.7	84.6	80.0	61.5	72.6	67.0
1998	99.1	99.5	99.3	94.1	95.7	94.9	70.7	80.6	75.5	57.4	69.9	63.5	75.0	84.9	79.8	61.5	73.4	67.4
1999	98.8	99.3	99.0	94.4	96.1	95.2	70.8	81.9	76.3	58.1	69.9	63.8	75.2	85.6	80.3	61.6	73.6	67.4
2000	99.0	99.6	99.3	94.1	95.2	94.6	70.2	80.4	75.2	57.0	70.5	63.6	74.4	83.6	78.9	60.6	73.6	67.0
2001	99.2	99.8	99.5	95.2	95.7	95.4	72.6	81.4	76.9	58.0	69.3	63.5	77.1	85.5	81.3	61.5	72.1	66.7
2002	99.7	99.9	99.8	95.4	96.4	95.9	74.8	82.8	78.7	59.9	70.7	65.2	78.6	86.6	82.5	63.7	74.3	68.9

Notes: Care should be taken in the interpretation of apparent retention rates, because they do not take account of factors such as migration, interstate movements of students, transfers to and from non-government schools, part-time schooling, students repeating a year of schooling, or students pursuing other education and training pathways.

Table 5. Enrolments (FTE) by Year of Schooling in NSW Non-government Schools, Midyear 2002

Year of Schooling	Male	Female	Total
Primary			
Kindergarten	13,100.7	12,770.7	25,871.4
Year 1	12,996.6	12,694.0	25,690.6
Year 2	12,706.3	12,625.0	25,331.3
Year 3	12,756.6	12,649.6	25,406.2
Year 4	12,967.4	12,395.2	25,362.6
Year 5	12,990.4	12,383.6	25,374.0
Year 6	13,244.2	12,801.4	26,045.6
Ungraded/Special Classes	186.6	130.0	316.6
Total Primary	90,948.8	88,449.5	179,398.3
Secondary			
Year 7	16,487.1	16,001.8	32,488.9
Year 8	15,875.2	15,584.8	31,460.0
Year 9	14,963.1	14,911.6	29,874.7
Year 10	14,812.8	14,376.0	29,188.8
Year 11	12,195.5	12,711.7	24,907.2
Year 12	10,946.8	11,918.7	22,865.5
Ungraded/Special Classes	74.0	45.0	119.0
Total Secondary	85,354.5	85,549.6	170,904.1
Special Schools	825.4	327.2	1,152.6
Total, All Students	177,128.7	174,326.3	351,455.0

Source: Commonwealth Department of Education, Science and Training.

Notes: All enrolments are reported in full-time equivalent units (FTEs), and include full-time and part-time students.
 'Ungraded' refers to non-special students in regular schools who are not allocated to specific school years.
 'Special Classes' refers to students in special/support classes in regular schools.

**Table 6. Enrolments (FTE) by in NSW Government and Non-government Schools
1901-2002**

Year	Government Schools		Non-government Schools		Total
	Enrolment	Percentage	Enrolment	Percentage	
1901	210,588	77.6%	60,837	22.4%	271,425
1911	221,810	78.3%	61,550	21.7%	283,360
1921	315,228	80.1%	78,460	19.9%	393,688
1931	387,881	80.8%	92,285	19.2%	480,166
1941	337,073	76.2%	105,319	23.8%	442,392
1951	405,906	75.3%	133,019	24.7%	538,925
1961	610,883	75.2%	201,147	24.8%	812,030
1971	771,713	77.6%	222,195	22.4%	993,908
1972	780,149	77.9%	221,400	22.1%	1,001,549
1973	777,100	77.9%	219,918	22.1%	997,018
1974	777,860	78.0%	219,100	22.0%	996,960
1975	789,126	78.3%	218,868	21.7%	1,007,994
1976	799,723	78.6%	218,348	21.4%	1,018,071
1977	809,710	78.7%	218,775	21.3%	1,028,485
1978	811,940	78.6%	220,763	21.4%	1,032,703
1979	807,602	78.2%	224,941	21.8%	1,032,543
1980	799,121	77.6%	230,384	22.4%	1,029,505
1981	790,575	76.9%	237,853	23.1%	1,028,428
1982	782,284	76.2%	245,007	23.8%	1,027,291
1983	778,604	75.6%	251,506	24.4%	1,030,110
1984	770,924	75.0%	257,599	25.0%	1,028,523
1985	761,017	74.2%	264,297	25.8%	1,025,314
1986	755,257	73.6%	270,745	26.4%	1,026,011
1987	755,084	73.2%	275,903	26.8%	1,031,004
1988	757,921	73.0%	280,609	27.0%	1,038,530
1989	749,263	72.5%	284,330	27.5%	1,033,593
1990	743,186	72.1%	287,437	27.9%	1,030,623
1991	746,417	72.0%	290,896	28.0%	1,037,313
1992	756,852	72.1%	293,376	27.9%	1,050,228
1993	758,048	72.0%	294,164	28.0%	1,052,212
1994	756,114	71.9%	296,157	28.1%	1,052,271
1995	755,907	71.5%	300,712	28.5%	1,056,619
1996	761,037	71.4%	305,383	28.6%	1,066,420
1997	764,173	71.0%	311,460	29.0%	1,075,633
1998	765,375	70.6%	318,305	29.4%	1,083,680
1999	765,332	70.1%	326,675	29.9%	1,092,007
2000	761,836	69.5%	334,922	30.5%	1,096,758
2001	756,740	68.7%	344,228	31.3%	1,100,968
2002	754,800	68.2%	351,455	31.8%	1,106,255

Source: Department of Education and Training; Official Yearbook of NSW; Australian Bureau of Statistics; and Commonwealth Department of Education, Science and Training.

Notes: Government and non-government school data for 1901-1961 include students in ACT schools.
From 1993 the table includes full-time and part-time students, reported in full-time equivalent units (FTEs).

Table 7. Head Count and Full-time Equivalence (FTE) of Part-time Students in NSW Government Schools by District and Year of Schooling, Midyear 2002

District	Year 11		Year 12		Total	
	Students	FTE	Students	FTE	Students	FTE
Albury	0	-	7	4.3	7	4.3
Armidale	20	4.4	14	6.8	34	11.2
Bankstown	0	-	9	6.3	9	6.3
Batemans Bay	17	5.1	24	7.5	41	12.6
Bathurst	25	4.9	17	7.9	42	12.8
Blacktown	5	3.5	19	12.7	24	16.2
Bondi	50	26.7	79	47.1	129	73.8
Broken Hill	39	10.4	8	5.1	47	15.5
Campbelltown	5	3.0	30	20.3	35	23.3
Central Coast	6	2.4	30	17.3	36	19.7
Clarence/Coffs Harbour	21	8.0	40	20.5	61	28.5
Deniliquin	1	0.2	5	3.4	6	3.6
Dubbo	58	20.1	68	22.7	126	42.8
Fairfield	18	6.8	57	39.8	75	46.6
Granville	66	13.2	24	17.0	90	30.2
Griffith	43	8.4	46	18.0	89	26.4
Hornsby	7	5.3	41	26.9	48	32.2
Lake Macquarie	14	7.7	49	30.0	63	37.7
Lismore	62	14.2	22	10.6	84	24.8
Liverpool	18	11.4	31	23.4	49	34.8
Maitland	7	2.1	20	11.2	27	13.3
Moree	72	17.8	35	9.9	107	27.7
Mount Druitt	8	4.6	50	32.8	58	37.4
Newcastle	13	7.6	65	43.4	78	51.0
Northern Beaches	12	5.9	38	21.7	50	27.6
Orange	15	3.0	19	11.0	34	14.0
Parramatta	5	4.0	19	12.7	24	16.7
Penrith	5	3.7	23	14.9	28	18.6
Port Jackson	2	1.3	14	8.6	16	9.9
Port Macquarie	18	12.1	22	12.4	40	24.5
Queanbeyan	5	1.2	12	7.8	17	9.0
Ryde	157	28.3	314	126.4	471	154.7
Shellharbour	5	3.0	13	7.5	18	10.5
St George	1	0.6	19	13.4	20	14.0
Sutherland	3	1.4	35	22.0	38	23.4
Tamworth	15	5.6	24	11.9	39	17.5
Taree	7	4.2	26	15.9	33	20.1
Tweed Heads/Ballina	13	7.2	34	21.0	47	28.2
Wagga Wagga	79	18.4	26	15.9	105	34.3
Wollongong	67	17.6	43	26.7	110	44.3
Total	984	305.3	1,471	794.7	2455	1,100.0

Table 8. Head Count and Full-time Equivalence (FTE) of Students in NSW Government Preschools by District, Midyear 2002

District	All Students		Aboriginal and Torres Strait Islander Students		
	Students	FTE	Students	FTE	% of Total
Albury	48	48.0	2	2.0	4.2%
Armidale	0	-	-	-	-
Bankstown	180	90.0	0	0	0
Batemans Bay	0	-	-	-	-
Bathurst	0	-	-	-	-
Blacktown	246	123.0	11	5.5	4.5%
Bondi	190	153.4	7	5.6	3.7%
Broken Hill	63	51.5	55	47.5	92.2%
Campbelltown	157	78.6	9	4.6	5.9%
Central Coast	50	25.0	5	2.2	8.8%
Clarence/Coffs Harbour	0	-	-	-	-
Deniliquin	10	6.0	10	6.0	100.0%
Dubbo	71	67.0	6	3.6	5.4%
Fairfield	410	205.3	0	-	-
Granville	119	59.5	0	-	-
Griffith	0	-	-	-	-
Hornsby	0	-	-	-	-
Lake Macquarie	144	72.4	19	9.9	13.7%
Lismore	46	15.1	24	8.1	53.6%
Liverpool	191	105.5	14	12.5	11.8%
Maitland	72	36.0	72	36.0	100.0%
Moree	84	55.2	30	25.7	46.6%
Mount Druitt	496	296.1	31	18.3	6.2%
Newcastle	198	99.0	3	1.6	1.6%
Northern Beaches	0	-	-	-	-
Orange	0	-	-	-	-
Parramatta	260	130.1	3	1.5	1.2%
Penrith	117	58.5	5	2.5	4.3%
Port Jackson	316	272.6	13	13.0	4.8%
Port Macquarie	0	-	-	-	-
Queanbeyan	0	-	-	-	-
Ryde	0	-	-	-	-
Shellharbour	174	78.9	28	19.8	25.1%
St George	49	24.6	1	0.4	1.6%
Sutherland	0	-	-	-	-
Tamworth	0	-	-	-	-
Taree	0	-	-	-	-
Tweed Heads/Ballina	48	24.2	7	3.4	14.0%
Wagga Wagga	0	-	-	-	-
Wollongong	163	95.9	7	5.3	5.5%
State	3902	2,271.4	362	235.0	10.3%

Figure 1. Primary and Secondary Enrolments in NSW Government Schools, 1978-2002

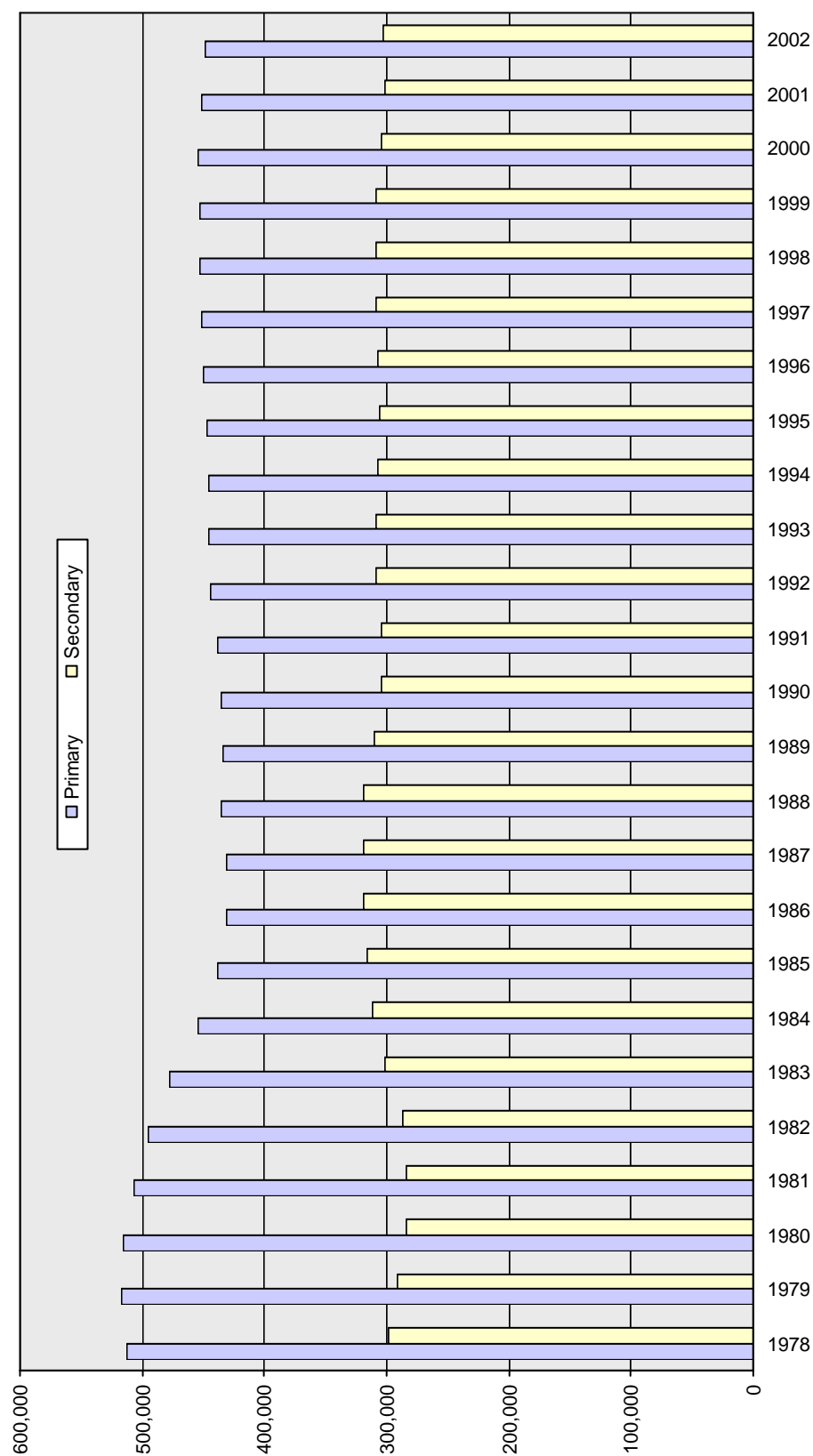


Figure 2. Government Enrolments by District and Level of Education, Midyear 2002

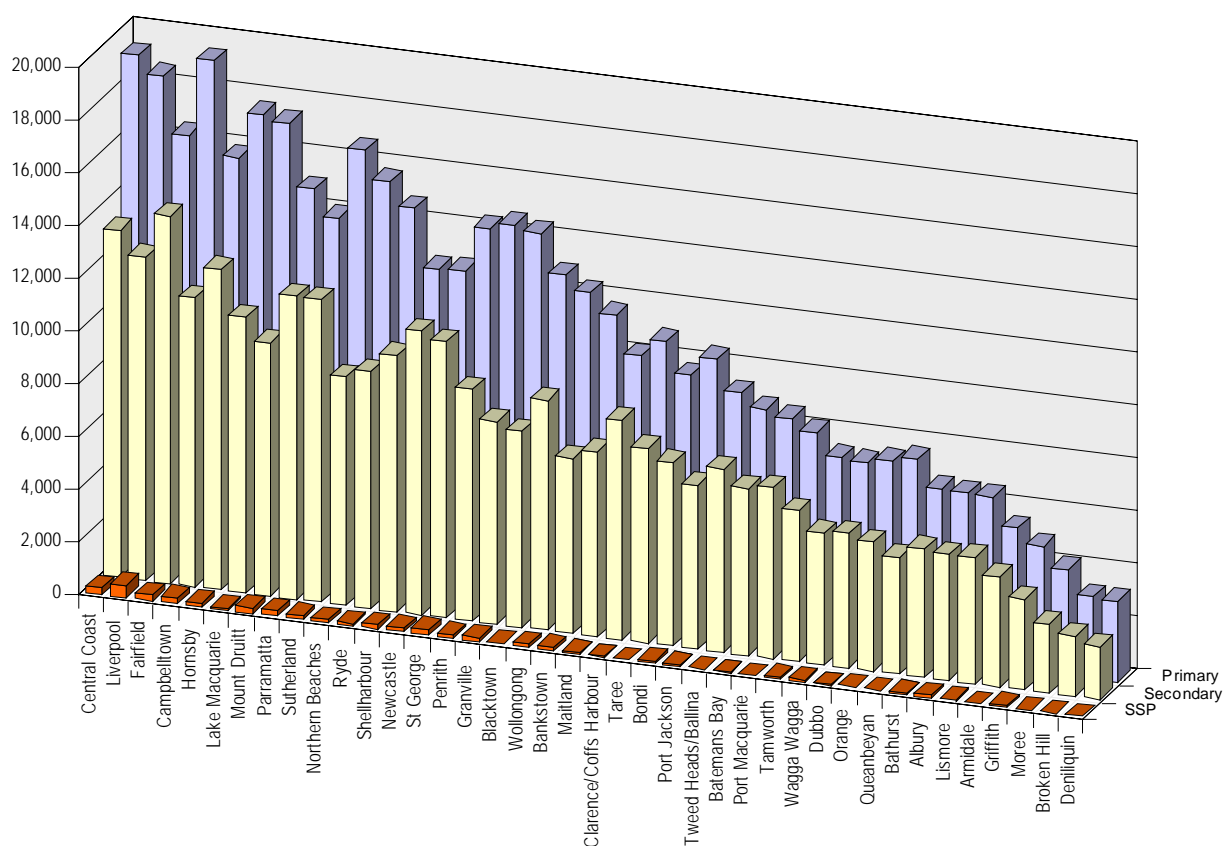


Figure 3. Aboriginal and Torres Strait Islander Student Enrolments by District and Level of Education, Midyear 2002

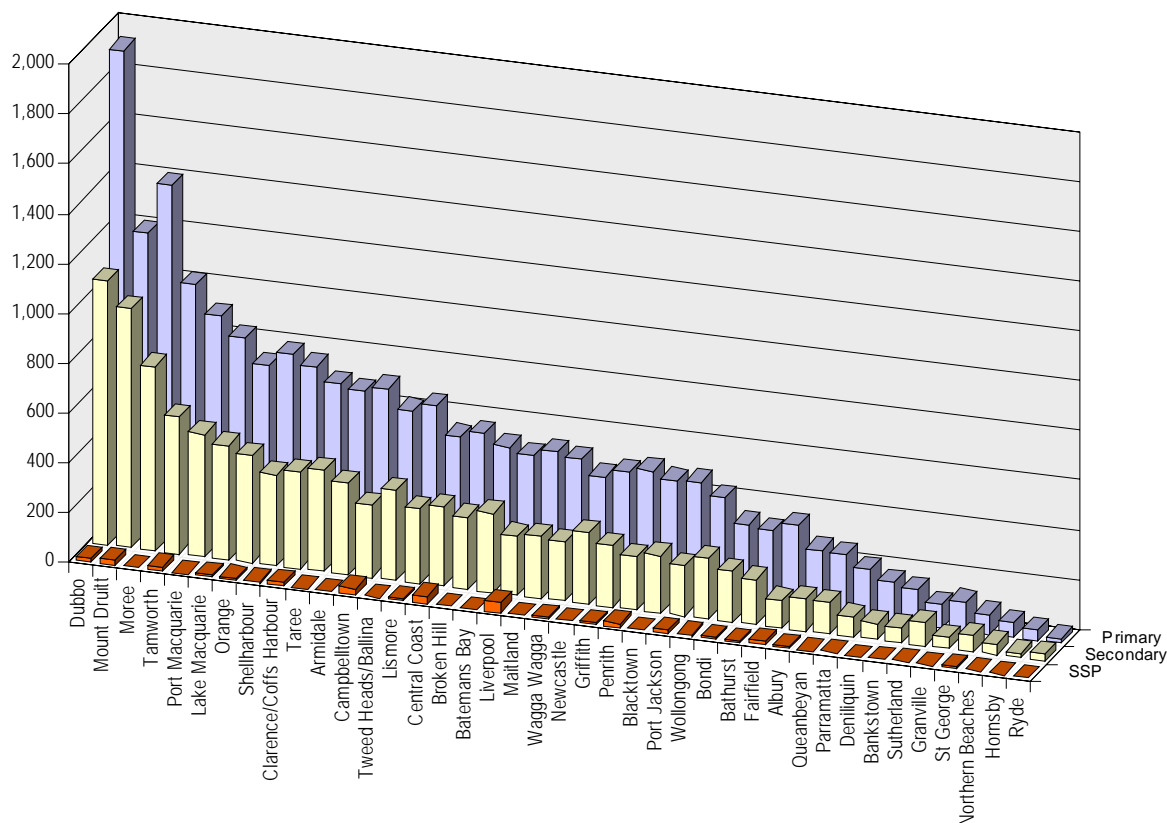


Figure 4. Apparent Retention Rate Year 7 to Year 12 in NSW Government Schools 1981-2002

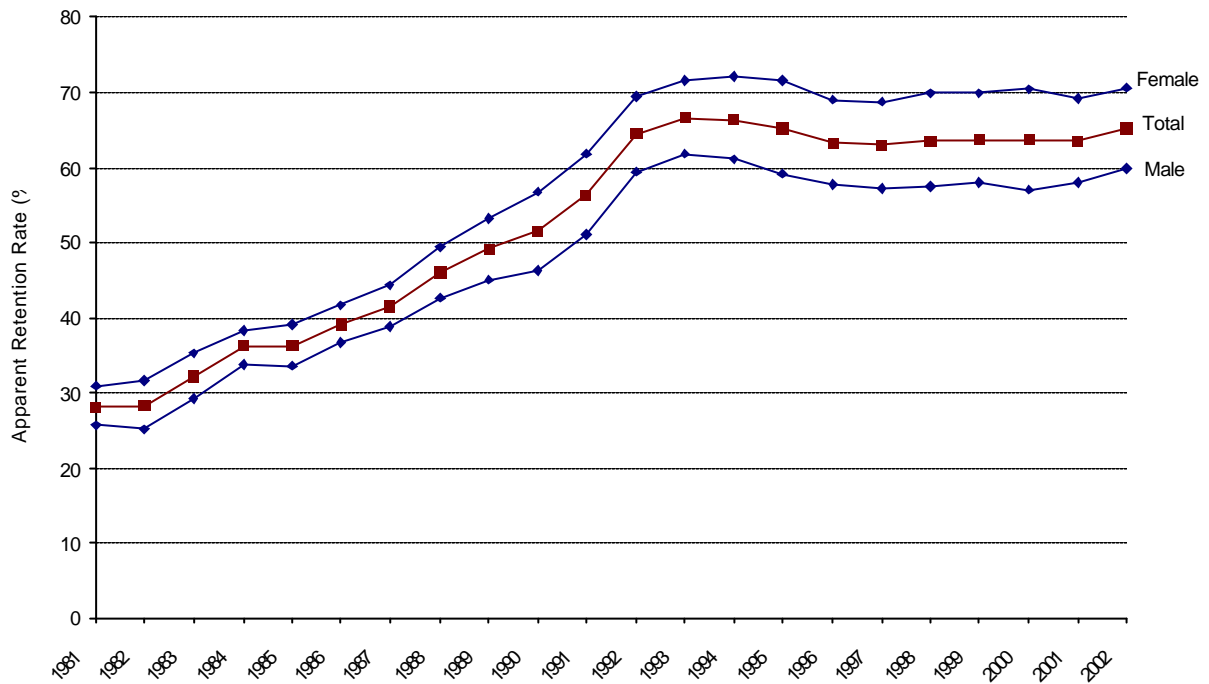


Figure 5. Total School Enrolments (FTE) by Sector, 1971-2002

