

NSW Foundation Spatial Data Framework:

Elevation and Depth Theme

Dataset/product title: NSW Contours

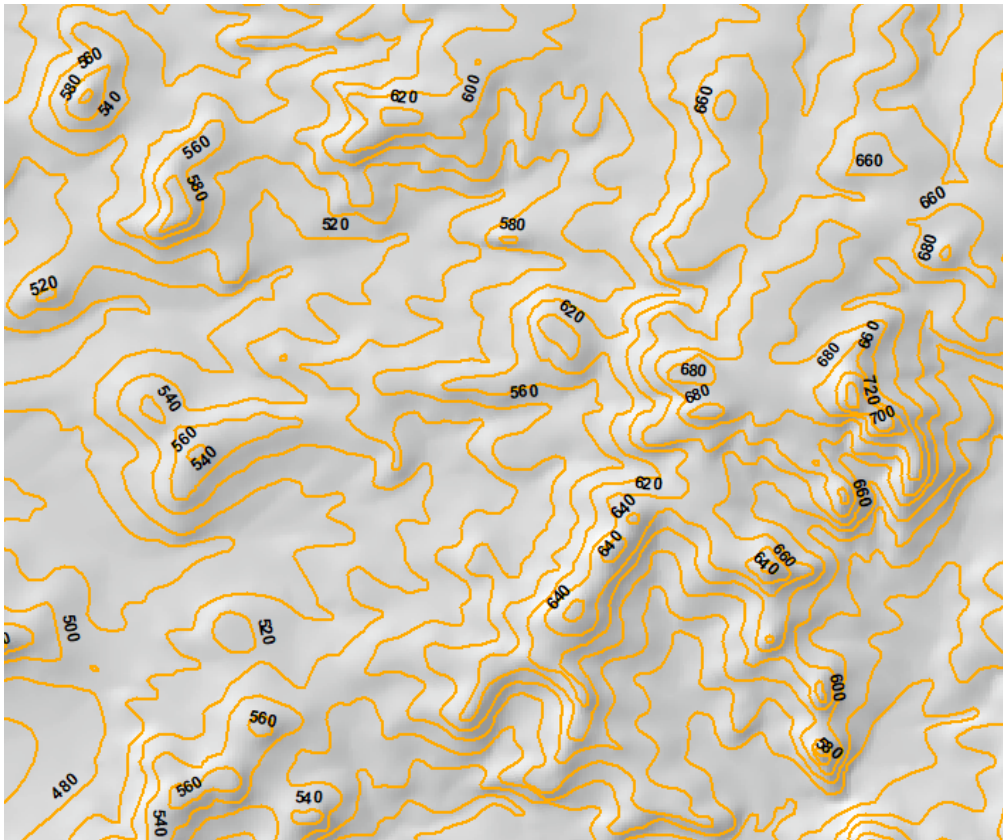


Image depicts sample of the NSW Contour dataset © DFSI Spatial Services 2018

Dataset/product description	Contours are virtual imaginary lines on the ground, joining points of an equal elevation in relation to the Australian Height Datum (AHD). A contour can be a standard contour, depression contour or an ancillary contour. It is a part of the NSW Digital Topographic Database (DTDB).
Dataset uses	<p>Elevation and Depth provides an authoritative digital representation of the Earth's surface enabling evidence based decision making, policy development and an essential reference to other foundation datasets.</p> <p>Elevation and Depth underpins:</p> <ul style="list-style-type: none">• safe hydrographic, aeronautical and road navigation• climate science, including climate change adaptation• emergency management and natural hazard risk assessment• environmental, including water management• definition of maritime and administrative boundaries• defence and national security• natural resource exploration and exploitation.

Current status	Data is as initially captured at 1:25 000, 1:50 000 and 1:100 000 scales from stereoscopic aerial photography.
Standards and specifications	Metadata for the relevant Spatial Services datasets are required to comply with AS/NZS ISO 19115 ANZLIC Metadata Profile v1.1, ISO 19115-2 and ISO 19139. AS/NZS ISO 4819:2011
Access and licensing	<p>Spatial Services, a division of the Department of Finance, Services and Innovation (DFSI) creates and manages Intellectual Property for the Crown in right of New South Wales.</p> <p>Acquisition of this data is subject to the customer entering into an appropriate Creative Commons license agreement.</p> <p>To the extent that Creative Commons licensing applies, all data and other material produced by Spatial Services constitutes Crown copyright.</p> <p>Spatial Services has applied the Creative Commons Attribution 3.0 Australia Licence. Spatial Services asserts the right to be attributed as author of the original material in the following manner:</p> <div data-bbox="525 967 940 1113" data-label="Image"> <p>The image shows the Creative Commons Attribution-NonCommercial 3.0 Australia License logo. It consists of three circular icons in a row: the first contains 'cc', the second contains a person icon, and the third contains an equals sign. Below these icons, the letters 'BY' and 'NC' are displayed in a bold, sans-serif font.</p> </div> <p>© Spatial Services [date of extraction]</p> <p>Additional terms for the use of Spatial Services material</p> <p>Any derived products which are created will be required to clearly mark the date that any extractions from the Spatial Services Spatial Database occurred.</p> <p>All Intellectual Property which is owned by Spatial Services should only be loaded on any external cloud platforms if Spatial Services' Intellectual Property remains unchanged, maintained and preserved.</p>
Metadata	Contours
Updates	Update of this data using high resolution digital elevation model is being planned.

Custodian agency and contact	Name: DFSI Spatial Services Address: 346 Panorama Ave Bathurst NSW 2795 Email: SS-SDS@finance.nsw.gov.au
Aggregator(s)	Name: DFSI Spatial Services Address: 346 Panorama Ave Bathurst NSW 2795 Email: SS-Environmental@finance.nsw.gov.au
Distributor(s)	Name: DFSI Spatial Services Address: 346 Panorama Ave Bathurst NSW 2795 Email: SS-SDS@finance.nsw.gov.au