

Schools and students: 2021 statistical bulletin

Centre for Education Statistics and Evaluation



2021 statistical bulletin summary

NSW government

Full-time equivalent (FTE) enrolments

Primary enrolments	485,889.0
Secondary enrolments	310,421.4
SSP enrolments	5,872.0
Total enrolments	802,182.4

Aboriginal and Torres Strait Islander students

Total Aboriginal & Torres Strait Islander enrolments	68,015.4
Percent Aboriginal & Torres Strait Islander enrolments	8.5%

Part-time students

Number of part-time students	1,790
FTE enrolments	1,196.4

Preschool students

Number of preschool students	4,203
FTE enrolments	2,229.5

Students with language background other than English (LBOTE)

LBOTE enrolments	302,799
LBOTE enrolments as per cent of total enrolments	37.2%

Attendance rate Semester 1 (including support)

Primary (Years 1-6)	92.3%
Secondary (Years 7-10)	86.1%

Years 1-10 90.1%

Average primary class size

Kindergarten to Year 6	23.6
------------------------	------

HSC Year 12

HSC awards	36,698
------------	--------

NSW government schools

Primary and infants schools	1,605
Central/community schools	68
Secondary schools	401
Schools for specific purposes (SSPs)	117
Environmental education centres (EECs)	23

Total government schools 2,214

Preschools attached to primary/infants schools	100
Separate preschools	1

Total preschools 101

NSW non-government

Full-time equivalent (FTE) enrolments

Primary enrolments	215,156.7
Secondary enrolments	225,809.9
Total enrolments	440,966.6

NSW non-government schools

Primary schools	491
Secondary schools	140
Primary/secondary schools	261
Special schools	64

Total non-government schools 956

Data sources

The 2021 statistical bulletin reports NSW government schools data from:

- the census of students undertaken on Friday, 6 August 2021
- the census of students of language background other than English, undertaken on Friday 5 March 2021
- the K-6 class size audit undertaken on Friday, 12 March 2021

- the K-6 languages programs: includes languages programs (in school hours) collection undertaken in May 2021
- the Years 7-9 language participation collection undertaken in May 2021
- Enrolment Registration Number (ERN) extract for the Family Occupation and Education Index (FOEI) at the beginning of Term 2 2021.

The bulletin also includes non-government schools data which were collected by the Australian Government Department of Education and Training on Friday, 6 August 2021.

Further reference

Additional information about schools and students in NSW is available from the Centre for Education Statistics and Evaluation's (CESE) other statistical publications.

Visit our website to download the publications: education.nsw.gov.au/about-us/educational-data/cese/publications.

Additional information is also available from the NSW Education Data Hub: data.cese.nsw.gov.au.

Table of contents

List of tables

Schools

Table 1 NSW government schools by size, 2011-2021	5
Table 2 NSW government schools by type and SA4 groupings, mid-year 2021	7
Table 3 NSW government schools by FOEI bands and SA4 groupings, mid-year 2021	8
Table 4 NSW government schools by ABS remoteness and SA4 groupings, mid-year 2021	9
Table 5 List of college arrangements, mid-year 2021	10
Table 6 Secondary education schools by selective, specialist and coeducational status, mid-year 2021	11

Classes

Table 7 Average primary class sizes by year, 1997 and 2011-2021	12
---------------------------------------------------------------------------	----

Students

Table 8 Enrolments (FTE) in NSW government schools, 1970, 1980, 1990, 1996-2021	13
Table 9 Age-grade distribution of students in NSW government schools, mid-year 2021, primary students by age and year of schooling (including students in mainstream support classes)	15
Table 10 Age-grade distribution of students in NSW government schools, mid-year 2021, secondary students by age and year of schooling (including students in mainstream support classes)	16
Table 11 Age-grade distribution of students in NSW government schools, mid-year 2021, part-time secondary students by age and year of schooling	18
Table 12 Enrolments in support classes and schools for specific purposes (SSPs) by category, mid-year 2021	19
Table 13 Age-grade distribution of students in NSW government schools for specific purposes (SSPs), by age and category, mid-year 2021	21
Table 14 Age distribution of students in NSW government preschools and early intervention programs, mid-year 2021	22
Table 15 Enrolments (FTE) in distance education by year of schooling, mid-year 2021	23
Table 16 Enrolments (FTE) of Aboriginal students by SA4 groupings and grade group in NSW government schools, mid-year 2021	24

Table 17	Enrolment of students of language background other than English (LBOTE) in NSW government schools, March 2021 by SA4 groupings and grade groups	25
-----------------	-------------------------------------------------------------------------------------------------------------------------------------------------	----

Table 18	Enrolments (FTE) in NSW government schools by FOEI quarters and SA4 groupings, April 2021	26
-----------------	-------------------------------------------------------------------------------------------	----

Study patterns

Table 19	Primary students in NSW government schools studying a language other than English by year of schooling and language, May 2021	27
-----------------	-------------------------------------------------------------------------------------------------------------------------------	----

Table 20	Language participation Year 7-9 by gender and year of schooling, May 2021	29
-----------------	---------------------------------------------------------------------------	----

Table 21	Board Developed Course enrolments in Year 10 subjects in NSW government schools, 2021	31
-----------------	---------------------------------------------------------------------------------------	----

Table 22	Course enrolments in Year 11 and Year 12 subjects in NSW government schools, 2021	36
-----------------	-----------------------------------------------------------------------------------	----

Progress measures

Table 23	Apparent retention (%) in NSW government schools, 2011-2021	42
-----------------	-------------------------------------------------------------	----

Table 24	NSW government school HSC completions, 2016-2021	44
-----------------	--------------------------------------------------	----

Table 25	Semester 1 attendance rates (%) in NSW government schools by Aboriginality, Years 1-10 2021	45
-----------------	---------------------------------------------------------------------------------------------	----

List of figures

Figure 1	NSW government schools, 2011-2021	6
-----------------	-----------------------------------	---

Figure 2	Primary and secondary enrolments (FTE) in NSW government schools, 2011-2021	14
-----------------	-----------------------------------------------------------------------------	----

Figure 3	Enrolments (FTE) in NSW government schools by year of schooling and gender, mid-year 2021	17
-----------------	-------------------------------------------------------------------------------------------	----

Figure 4	Enrolments (FTE) in NSW government schools by age and gender, mid-year 2021	17
-----------------	-----------------------------------------------------------------------------	----

Figure 5	Enrolments in support classes in mainstream schools and SSPs by category, mid-year 2021	20
-----------------	-----------------------------------------------------------------------------------------	----

Figure 6	Apparent retention (%) in NSW government schools, 2011-2021	43
-----------------	-------------------------------------------------------------	----

Figure 7	Semester 1 attendance rates (%) in NSW government schools, Aboriginal, non-Aboriginal and all students, Years 1-10, 2021	46
-----------------	--------------------------------------------------------------------------------------------------------------------------	----

Schools

Table 1
NSW government schools by size, 2011-2021

Classification	2011	2012	2013	2014	2015	2016	2017	2018	2019	2020	2021
Primary and infants schools											
More than 700 enrolments	66	70	85	95	97	106	118	120	116	117	115
451 to 700 enrolments	259	260	263	260	263	269	267	273	281	286	273
301 to 450 enrolments	299	292	285	298	307	308	309	304	317	312	315
160 to 300 enrolments	381	380	378	361	350	335	334	336	324	322	332
26 to 159 enrolments	441	453	424	412	411	407	397	388	377	370	371
Less than 26 enrolments	184	167	182	191	178	183	182	183	190	200	199
Total	1,630	1,622	1,617	1,617	1,606	1,608	1,606	1,604	1,605	1,607	1,605
Central and community schools											
More than 900 enrolments	3	3	3	3	3	3	2	2	2	3	3
701 to 900 enrolments	1	1	1	1	2	2	3	3	3	2	2
451 to 700 enrolments	4	4	5	4	3	3	2	3	3	3	4
301 to 450 enrolments	8	7	6	8	7	8	8	7	9	8	5
160 to 300 enrolments	17	20	20	20	20	17	18	20	17	20	20
Less than 160 enrolments	34	32	32	31	31	33	32	31	34	32	34
Total	67	67	67	67	66	66	66	66	68	68	68
Secondary schools											
More than 900 enrolments	129	130	123	127	127	124	125	126	129	136	134
900 or less enrolments	268	267	274	270	272	275	274	273	268	263	265
Other	1	1	1	1	2	2	2	2	2	2	2
Total	398	398	398	398	401	401	401	401	399	401	401
Other schools											
Schools for specific purposes	113	113	113	114	113	112	113	113	115	116	117
Environmental education centres	23	23	23	23	23	23	23	23	23	23	23
Total schools	2,231	2,223	2,218	2,219	2,209	2,210	2,209	2,207	2,210	2,215	2,214

Notes:

- This table shows schools by size (number of students) rather than 'classification' as in previous publications, as school classification is no longer applicable.
- NSW School of Languages and Aurora College are included in 'Other' category under Secondary schools. These schools do not have full-time enrolments.
- Refer to explanatory notes 1, 2 and 3.

Figure 1

NSW government schools, 2011-2021

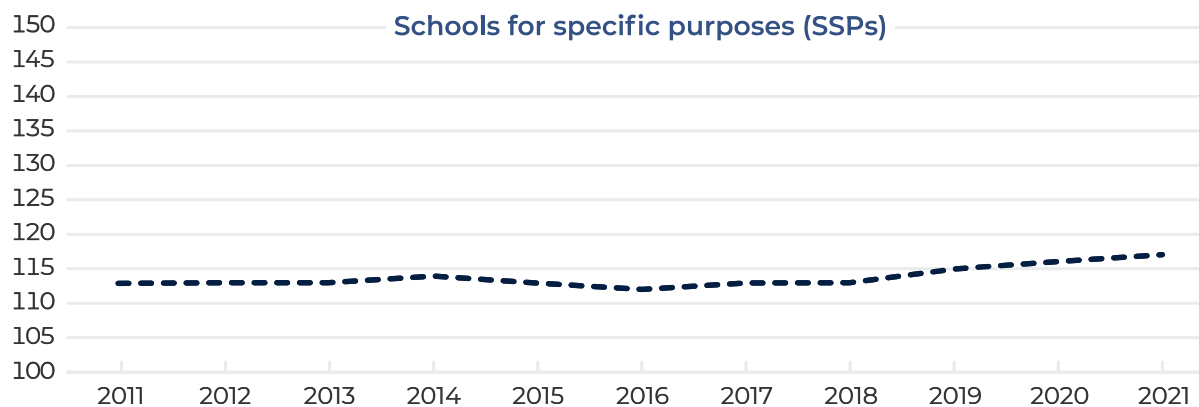
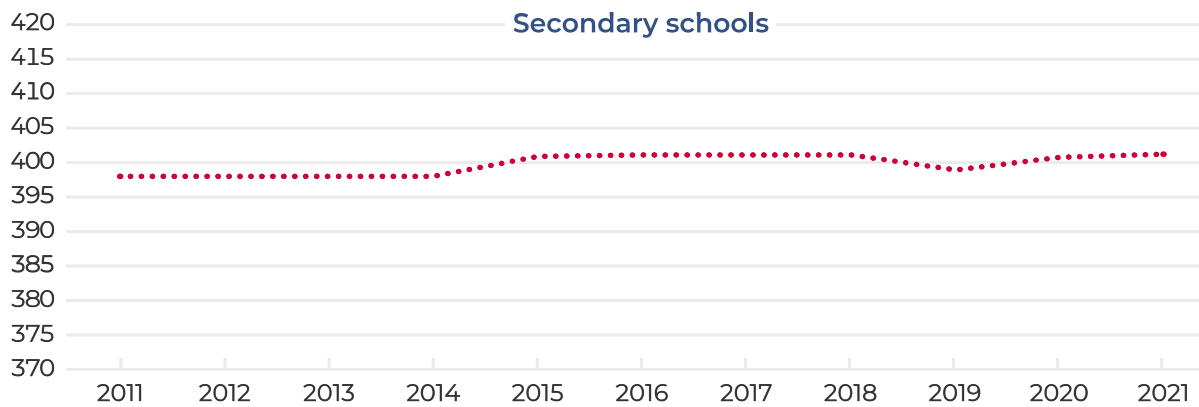
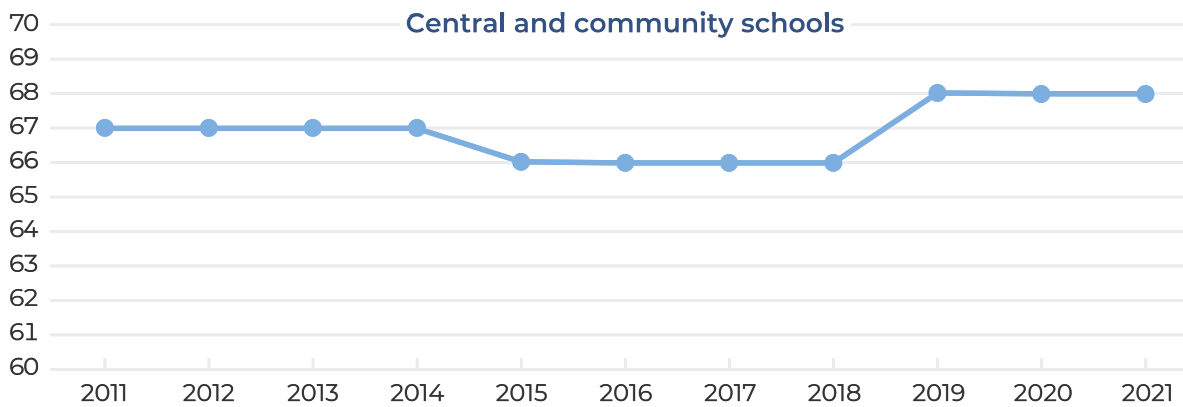
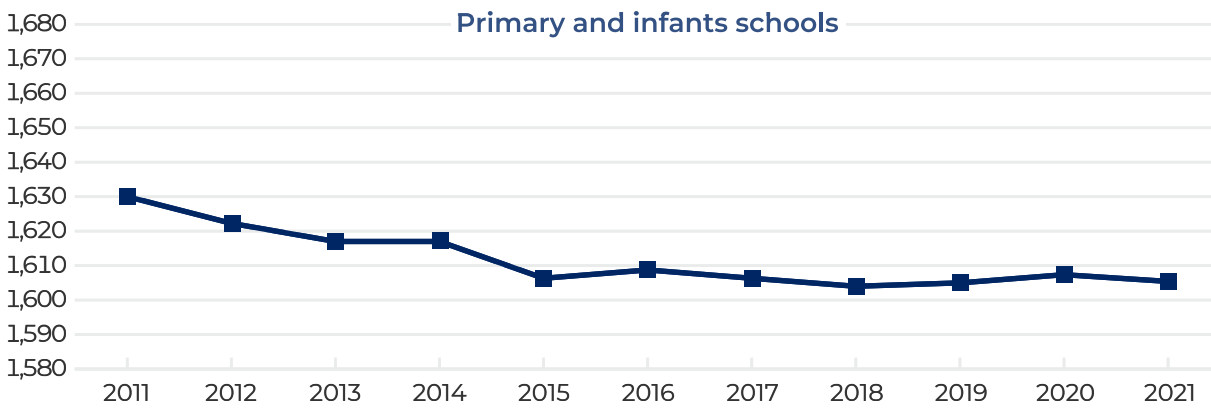


Table 2**NSW government schools by type and SA4 groupings, mid-year 2021**

SA4 Groupings	Primary/ infants	Central/ community	Secondary	SSPs	EECs	Total
Sydney-North	100	1	34	12	2	149
Sydney-Inner	90	1	29	10	1	131
Sydney-South	117	1	38	15	2	173
Sydney-South West	116	0	39	13	3	171
Sydney-West	117	0	36	17		170
Sydney-North West	111	0	28	5	3	147
Sydney total	651	3	204	72	11	941
North East NSW	213	8	39	4	2	266
North West NSW	213	28	43	8	3	295
South West NSW	203	22	40	11	2	278
South East NSW	183	4	39	9	2	237
Central Coast, Newcastle	142	2	36	13	3	196
Regional total	954	65	197	45	12	1,273
NSW	1,605	68	401	117	23	2,214

Notes:

- Alexandria Park Community School, Batlow Technology School, Dubbo School of Distance Education, Evans River Community School, Hunter School of Performing Arts, Lucas Heights Community School and Wadalba Community School are included with central/community schools.
- Refer to explanatory notes 1, 2, 3 and 17.

Table 3**NSW government schools by FOEI bands and SA4 groupings, mid-year 2021**

SA4 Groupings	Less than 50	50 to 90	90 to 110	110 to 150	150 or more	N/A	Total	≥ 110 (%)
Sydney-North	125	15	2	1	2	4	149	2.0%
Sydney-Inner	90	27	7	3	2	2	131	3.8%
Sydney-South	42	63	24	28	14	2	173	24.3%
Sydney-South West	2	24	35	58	49	3	171	62.6%
Sydney-West	41	34	20	38	36	1	170	43.5%
Sydney-North West	30	45	23	39	7	3	147	31.3%
Sydney total	330	208	111	167	110	15	941	29.4%
North East NSW	8	57	54	109	36	2	266	54.5%
North West NSW	2	34	35	126	96	3	296	75.0%
South West NSW	1	39	60	129	47	2	278	63.3%
South East NSW	23	61	49	75	27	2	237	43.0%
Central Coast, Newcastle	24	55	24	77	13	3	196	45.9%
Regional total	58	246	222	516	219	12	1,273	57.7%
NSW	388	454	333	683	329	27	2,214	45.7%

Notes:

The list of schools with FOEI values and quarters:

- Includes:
 - All hospital schools (all assigned a notional FOEI of 100)
 - Stewart House School (assigned a notional FOEI of 150)
 - Royal Far West School (assigned a notional FOEI of 150)
- Excludes:
 - Palm Avenue School
 - NSW School of Languages
 - All Environmental Education Centres
 - Aurora College.
- Refer to explanatory notes 15 and 17.
- Norfolk Island Central School is included in the North West NSW SA4 Grouping.

Table 4

NSW government schools by ABS remoteness and SA4 groupings, mid-year 2021

SA4 Groupings	Major cities	Inner regional	Outer regional	Remote	Very remote	Total
Sydney-North	147	2				149
Sydney-Inner	131					131
Sydney-South	170	3				173
Sydney-South West	158	13				171
Sydney-West	170					170
Sydney-North West	122	24	1			147
Sydney total	898	42	1	0	0	941
North East NSW	21	193	50		1	265
North West NSW	32	94	129	29	11	295
South West NSW		141	128	10		279
South East NSW	91	108	38			237
Central Coast, Newcastle	190	6				196
Regional total	334	542	345	39	13	1,273
NSW	1,232	584	346	39	13	2,214

Notes:

- From 2016 onwards, instead of the Ministerial Council for Education, Early Childhood Development and Youth Affairs (MCEEDYA) remoteness categories, remoteness geographical data will be reported by the ABS remoteness structure. This is in line with national reporting.
- Refer to explanatory notes 2 and 17.

Table 5

List of college arrangements, mid-year 2021

College	Senior campus	Other campuses
Brisbane Water Secondary College	Woy Woy Campus	Umina Campus
Callaghan College	Jesmond Senior Campus	Wallsend Campus Waratah Campus
Chifley College	Senior Campus	Bidwill Campus Dunheved Campus Mount Druitt Campus Shalvey Campus
Denison College of Secondary Education		Bathurst High Campus Kelso High Campus
Dubbo College	Senior Campus	Delroy Campus South Campus
Georges River College	Oatley Senior Campus	Hurstville Boys Campus Peakhurst Campus Penshurst Girls Campus
Great Lakes College	Senior Campus	Forster Campus Tuncurry Campus
Hastings Secondary College		Port Macquarie Campus Westport Campus
Moree Secondary College	Albert St Campus	Carol Ave Campus
Nirimba College	Wyndham College	Quakers Hill High School Riverstone High School Seven Hills High School
Northern Beaches Secondary College	Freshwater Senior Campus	Balgowlah Boys Campus Cromer Campus Mackellar Girls Campus Manly Campus
Sydney Secondary College	Blackwattle Bay Campus	Balmain Campus Leichhardt Campus
The Rivers Secondary College		Kadina High Campus Lismore High Campus Richmond River High Campus
Tuggerah Lakes Secondary College	The Entrance Campus	Berkeley Vale Campus Tumbi Umbi Campus

Notes:

- Denison College of Secondary Education, Hastings Secondary College and The Rivers Secondary College do not have senior campuses.
- Refer to explanatory note 14.

Table 6

Secondary education schools by selective, specialist and coeducational status, mid-year 2021

Selective status	Specialty name	Coeducational	Boys	Girls	Total
Fully selective	Agricultural	3	1		4
	Comprehensive	9	4	4	17
Partially selective	Comprehensive	16	2	2	20
	Junior college	2			2
	Language	2			2
	Senior college	1			1
	Other	1			1
Total selective		33	7	6	46
Non-selective	Comprehensive	329	11	15	355
	Creative arts	1			1
	Distance education	2			2
	Intensive English	1			1
	Junior college	14	1	1	16
	Language	3		1	4
	Marine technology	1			1
	Performing arts	8			8
	Rural technology	1			1
	Senior college	15			15
	Sports	7			7
	Technology	7	2	1	10
	Visual arts	1			1
Total non-selective		390	14	18	422
Total secondary schools		423	21	24	468

Notes:

- Includes secondary schools and central/community schools. The Conservatorium High School is included with performing arts schools.
- Refer to explanatory note 1.

Classes

Table 7

Average primary class sizes by year, 1997 and 2011-2021

Year	1997	2011	2012	2013	2014	2015	2016	2017	2018	2019	2020	2021
Kindergarten	24.1	19.2	19.3	19.4	19.3	19.2	19.1	19.1	19.1	18.8	18.8	18.6
Year 1	25.5	21.2	21.2	21.3	21.4	21.3	21.3	21.3	21.4	21.1	21	20.9
Year 2	26.2	22.6	22.7	22.7	22.7	22.7	22.6	22.5	22.5	22.3	22.2	22.0
Year 3	26.6	25.7	25.5	25.6	25.6	25.9	25.9	25.7	25.8	25.7	25.4	25.1
Year 4	26.8	26.1	25.9	25.9	25.9	26.2	26.2	26.1	26.1	25.9	25.6	25.4
Year 5	26.8	26.4	26.2	26.3	26.2	26.5	26.3	26.4	26.4	26.1	25.9	25.6
Year 6	26.9	26.3	26.2	26.1	26.2	26.4	26.3	26.4	26.4	26.1	25.9	25.7
Kindergarten – Year 6	26.9	24.0	24.0	24.0	24.0	24.1	24.1	24.1	24.1	23.9	23.8	23.6

Notes:

- Class size audits were not conducted in 1998, 1999, 2000 and 2001.
- The average class size for each year level is calculated from regular and multi-age classes that contain a student from that year level. This can result in a lower K-6 average class size than any individual year level.
- Students attending schools for specific purposes (SSPs), students in mainstream support classes and distance education students are excluded from average class size calculations.
- From 2017, school size is based on primary enrolment rather than school classification.
- Data from earlier years is not replaced in the Class Size factsheet. Schools change size. Historical data displays the data that was correct in that year.
- Refer to explanatory note 12.

Students

Table 8

Enrolments (FTE) in NSW government schools, 1970, 1980, 1990, 1996-2021

Year	Primary (K-6)	Secondary (7-12)	SSP	Total
1970	503,547	257,874		761,421
1980	515,769	283,352		799,121
1990	434,814	304,006	4,366	743,186
1996	450,465	306,823.3	3,749	761,037.3
1997	451,560	308,922.7	3,690	764,172.7
1998	452,568	309,133.7	3,673	765,374.7
1999	453,454	308,116.1	3,762	765,332.1
2000	454,363	303,681	3,792	761,836
2001	451,093	301,774.4	3,873	756,740.4
2002	447,897	302,988	3,915	754,800
2003	443,213	304,034	3,938	751,185
2004	438,677	302,849.6	3,981	745,507.6
2005	434,876	302,578.3	4,124	741,578.3
2006	432,660	303,622	4,133	740,415
2007	429,900	304,457.7	4,278	738,635.7
2008	428,331	303,055.7	4,392	735,778.7
2009	429,000	303,180.7	4,466	736,646.7
2010	430,177	307,291.2	4,673	742,141.2
2011	433,873	306,893.2	4,774	745,540.2
2012	438,681	304,632.1	4,921	748,234.1
2013	446,848	303,433.6	5,064	755,345.6
2014	456,151	302,339.7	5,207	763,697.7
2015	465,767	300,871.1	5,340	771,978.1
2016	475,073	300,069.9	5,457	780,599.9
2017	484,645	300,832.8	5,562	791,039.8
2018	491,043	301,315.2	5,664	798,022.2
2019	493,608	306,327.8	5,737	805,672.8
2020	492,280	312,016.8	5,780	810,076.8
2021	485,889	310,421.4	5,872	802,182.4

Notes:

- Since 1993 some students have enrolled part-time. All enrolments are reported in full-time equivalent (FTE) units and include full-time and part-time students.
- Refer to explanatory notes 1, 2, 3, 7 and 8.

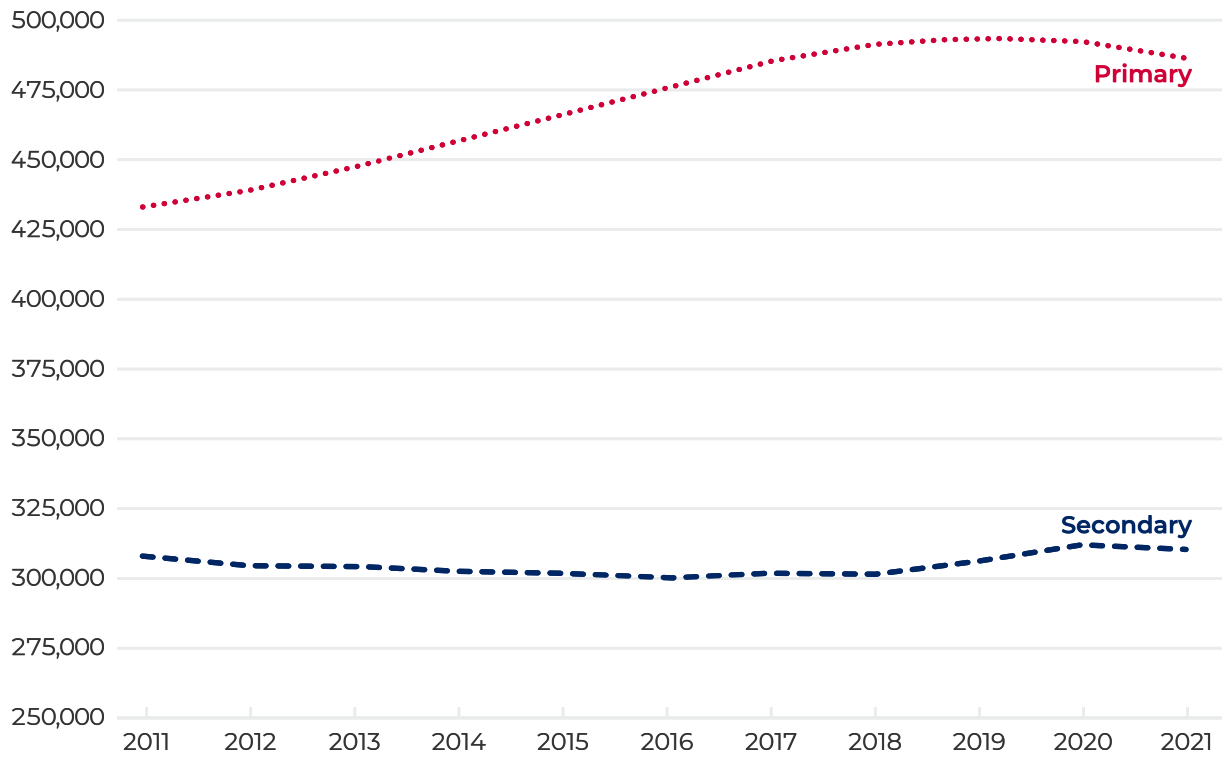
Figure 2**Primary and secondary enrolments (FTE) in NSW government schools, 2011-2021**

Table 9

Age-grade distribution of students in NSW government schools, mid-year 2021, primary students by age and year of schooling (including students in mainstream support classes)

Age Yrs:mts	Kindergarten		Year 1		Year 2		Year 3		Year 4		Year 5		Year 6		Total		Primary total
	Boys	Girls	Boys	Girls	Boys	Girls	Boys	Girls	Boys	Girls	Boys	Girls	Boys	Girls	Boys	Girls	
Under 5	458	664													458	664	1,122
5-5:11	24,434	24,926	424	542											24,858	25,468	50,326
6-6:11	10,723	7,587	24,799	25,073	441	565									35,963	33,225	69,188
7-7:11	31*	21*	10,861	7,563	25,134	25,750	421	559							36,445	33,889	70,334
8-8:11			40	13	10,729	7,416	25,850	26,309	487*	698					37,105	34,438	71,543
9-9:11					34	18*	10,689	7,350	25,579	26,101	467	611			36,769	34,080	70,849
10-10:11							35*	17	10,108	6,983	24,928	25,800	405	696	35,476	33,498	68,974
11-11:11									34	20	9,850	6,848	25,127	25,878	35,012	32,746	67,758
12-12:11											28	30	9,229	6,440	9,259	6,470	15,729
13 and over													40	26	40	26	66
Subtotal	35,646	33,198	36,124	33,191	36,338	33,749	36,995	34,235	36,208	33,802	35,273	33,289	34,801	33,040	251,385	234,504	
Total	68,844		69,315		70,087		71,230		70,010		68,562		67,841		485,889		485,889

Notes:

- Students in distance education and Opportunity Classes (OC) are included with their appropriate grade levels.
- From 2020, students in mainstream support classes are included in their underlying grade of enrolment. Students in schools for specific purposes (SSPs) are not included.
- In most scholastic years there are a small number of students in atypical age groups. These have been included in the nearest band. This is indicated with an asterisk. For instance, of the 18 Year 2 Girls in the 9-9:11 age bracket, up to 5 students are included from older age brackets. As a result, the sum of each row may not equal the totals reported.

Table 10

Age-grade distribution of students in NSW government schools, mid-year 2021, secondary students by age and year of schooling (including students in mainstream support classes)

Age Yrs:mts	Year 7		Year 8		Year 9		Year 10		Year 11		Year 12		Total		Secondary total
	Boys	Girls	Boys	Girls	Boys	Girls	Boys	Girls	Boys	Girls	Boys	Girls	Boys	Girls	
Under 12	411	557											414	559	973
12-12:11	21,281	21,362	409*	606*									21,689	21,966	43,655
13-13:11	7,596	5,289	21,739	21,723	421*	609							29,757	27,622	57,379
14-14:11	57*	34	8,085	5,450	21,432	21,415	372*	569*					29,943	27,469	57,412
15-15:11			71	44*	7,821	5,467	20,256	20,178	399*	514*			28,547	26,201	54,748
16-16:11					135*	93*	7,727	5,361	16,358	17,713	337	427*	24,545	23,578	48,123
17-17:11							166	124	5,529	4,380	13,104	15,318	18,805	19,826	38,631
18-18:11							23	27	157	167	4,622	4,104	4,803	4,300	9,103
19-19:11							15	26	31	43	192	187	241	258	499
20-20:11							23	18	16	17	28	42	69	79	148
21 and over							58	114	34	44	38	50	130	214	344
Subtotal	29,345	27,242	30,304	27,823	29,809	27,584	28,640	26,417	22,524	22,878	18,321	20,128	158,943	152,072	
Total	56,587		58,127		57,393		55,057		45,402		38,449		311,015		311,015

Notes:

- Students in distance education and Opportunity Classes (OC) are included with their appropriate grade levels.
- From 2020, students in mainstream support classes are included in their underlying grade of enrolment. Students in schools for specific purposes (SSPs) are not included.
- In most scholastic years there are a small number of students in atypical age groups. These have been included in the nearest band. This is indicated with an asterisk. For instance, of the 57 Year 7 Boys in the 14-14:11 age bracket, up to 5 students are included from older age brackets. As a result, the sum of each row may not equal the totals reported.

Figure 3

Enrolments (FTE) in NSW government schools by year of schooling and gender, mid-year 2021

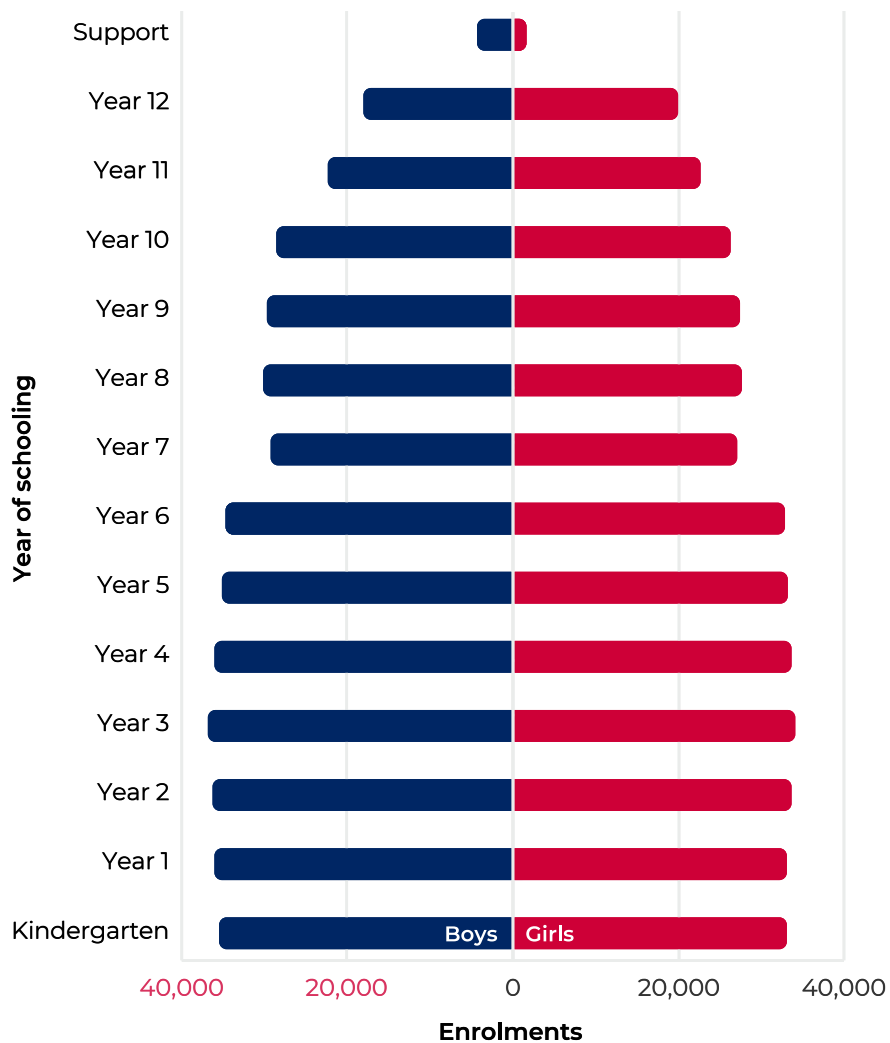
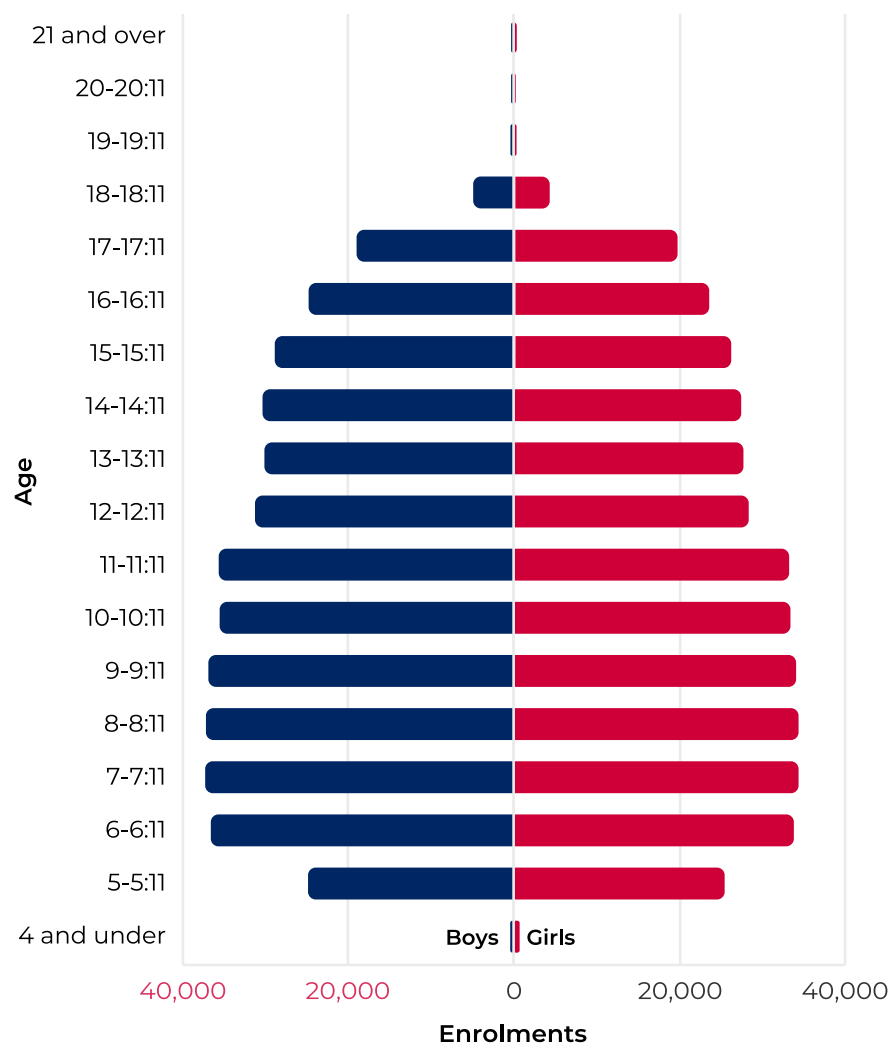


Figure 4

Enrolments (FTE) in NSW government schools by age and gender, mid-year 2021



Note:

- From 2020, 'Support' includes only students in schools for specific purposes (SSPs). Students in mainstream support classes are included in their underlying grade of enrolment.

Table 11

Age-grade distribution of students in NSW government schools, mid-year 2021, part-time secondary students by age and year of schooling

Age Years:months	Year 11		Year 12		Total		Total part-time
	Boys	Girls	Boys	Girls	Boys	Girls	
Under 16							8
16-16:11	159*	162*	4	5	163*	167*	322
17-17:11	65	65	353	517	418	582	1,000
18-18:11	7	10	189	192	196	202	398
19-19:11	2	2	24	18	26	20	46
20-20:11	2	1	3	3	5	4	9
21 and over	1	1	3	2	4	3	7
Subtotal	236	241	576	737	812	978	
Total	477		1,313		1,790		1,790

Full-time equivalent

Subtotal	131.3	140.1	404.2	520.8	535.5	660.9	
Total	271.4		925		1,196.4		1,196.4

Notes:

- In most scholastic years there are a small number of students in atypical age groups. These have been included in the nearest band. This is indicated with an asterisk. For instance, of the 162 Year 11 Girls in the 16-16:11 age bracket, up to 5 students are included from younger age brackets. As a result, the sum of each row may not equal the totals reported.
- Refer to explanatory notes 7 and 8.

Table 12

Enrolments in support classes and schools for specific purposes (SSPs) by category, mid-year 2021

Category	Primary	Secondary	Schools for specific purposes (SSP)	Total
AU	1,808	1,678	98	3,584
BD	28	65	401	494
DB			3	3
ED	381	786	1,034	2,201
H	116	126		242
IE	17	548		565
IM	1,463	3,354		4,817
IO	512	653		1,165
IO/AU	928	253	185	1,366
IO/IS	452	465	3,072	3,989
IS	23		95	118
JJ			164	164
MC	3,781	2,952	756	7,489
P	28	52	12	92
TUT	5	100	39	144
V			13	13
Total	9,542	11,032	5,872	26,446

Key:

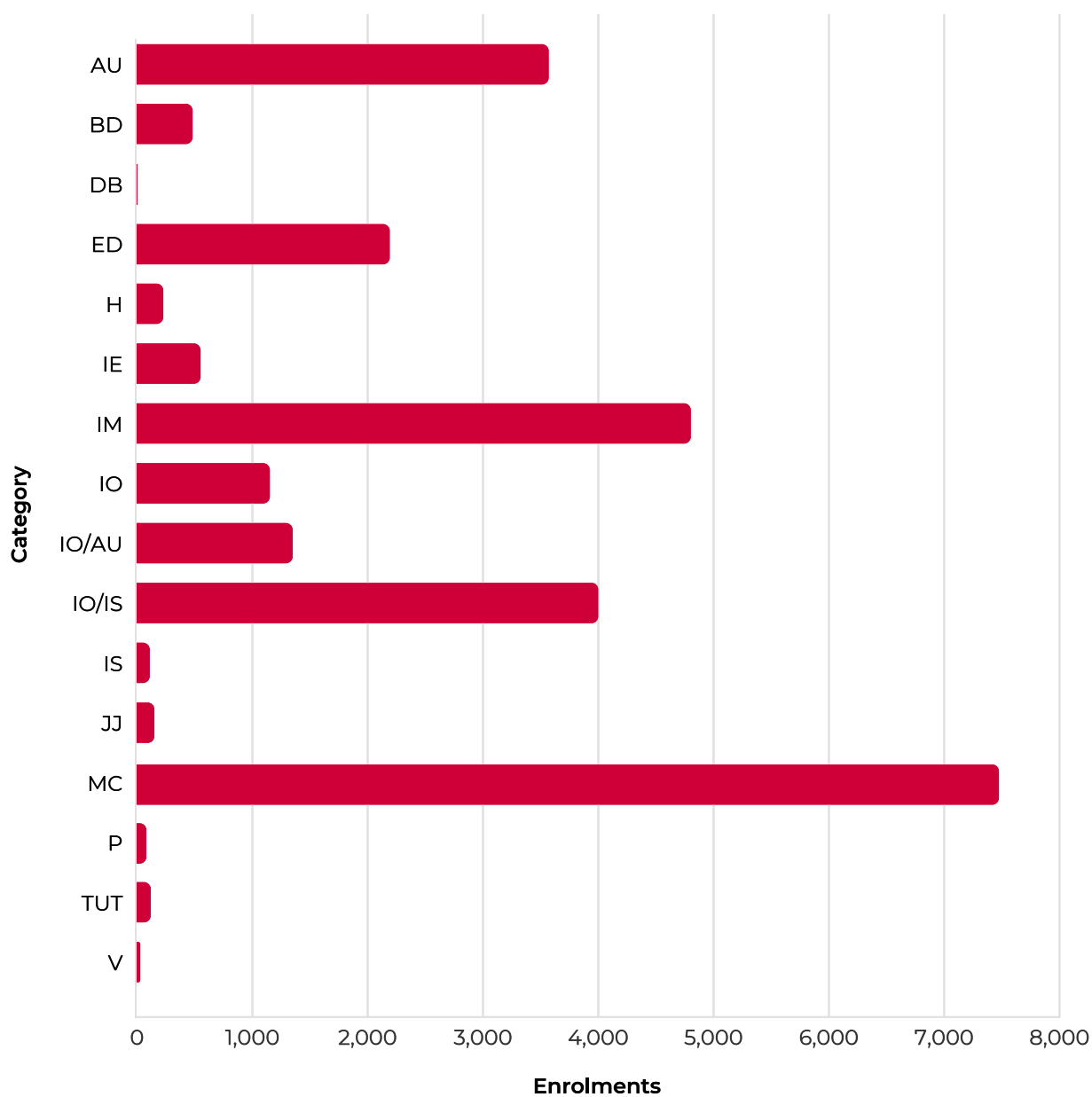
AU	Autism	IO/AU	Both autism and moderate intellectual disability
BD	Behaviour disorder	IO/IS	Moderate or severe intellectual disability
DB	Visual and hearing disability	IS	Severe intellectual disability
ED	Emotional disturbance	JJ	Juvenile Justice
H	Hearing disability	MC	Multicategorical
IE	Intensive English	P	Physical disability
IM	Mild intellectual disability	TUT	Tutorial
IO	Moderate intellectual disability	V	Visual disability

Notes:

- Students in SSPs, except those in juvenile justice schools, are reported by the type of support class they are enrolled in, not by the type of SSP.
- From 2020, students in mainstream support classes are reported by their underlying grade of enrolment.
- Refer to explanatory notes 3 and 5.

Figure 5

Enrolments in support classes in mainstream schools and SSPs by category, mid-year 2021



Key:

AU	Autism	IM	Mild intellectual disability	MC	Multicategorical
BD	Behaviour disorder	IO	Moderate intellectual disability	P	Physical disability
DB	Visual and hearing disability	IO/AU	Both autism and moderate intellectual disability	TUT	Tutorial
ED	Emotional disturbance	IO/IS	Moderate or severe intellectual disability	V	Visual disability
H	Hearing disability	IS	Severe intellectual disability		
IE	Intensive English	JJ	Juvenile Justice		

Table 13**Age-grade distribution of students in NSW government schools for specific purposes (SSPs), by age and category, mid-year 2021**

Age Years:months	BD	ED	IO/AU	IO/IS	IS	JJ	MC	Total		All
								Boys	Girls	
Under 5			1	12	1		2	13	4	17
5-5:11		1	6	123	6		28	125	42	167
6-6:11		18	9	212	6		45	231	71	302
7-7:11		26	16	277	7		45	277	102	379
8-8:11		32	12	221	9		61	252	97	349
9-9:11	1	45	15	209	5		50	241	93	334
10-10:11	8	47	9	196	9		61	259	83	342
11-11:11	20	67	13	219	12		58	317	89	406
12-12:11	38	69	19	247	4		67	347	113	460
13-13:11	73	99	19	259	5	5	77	378	177	555
14-14:11	97	139	22	252	8	13	89	447	190	637
15-15:11	98	178	11	227	10	18	48	428	173	601
16-16:11	49	172	13	243	6	42	56	424	172	596
17-17:11	13	90	14	265	6	48	46	347	145	492
18-18:11	4	38	6	109	1	21	21	133	69	202
19 and over		13		1		17	2	26	7	33
Subtotal								4,245	1,627	
Total	401	1,034	185	3,072	95	164	756	5,872		5,872

Key:

BD	Behaviour disorder
ED	Emotional disturbance
IO/AU	Both autism and moderate intellectual disability
IO/IS	Moderate or severe intellectual disability
IS	Severe intellectual disability
JJ	Juvenile Justice
MC	Multicategorical

Notes:

- Students in SSPs, except those in juvenile justice schools, are reported by the type of support class they are enrolled in, not by the type of SSP.
- The total figures includes additional support class types (autism, physical disability, tutorial class, visual disability, both visual and hearing disability). These figures have not been provided separately in the table due to suppression rules.
- Refer to explanatory note 3.

Table 14**Age distribution of students in NSW government preschools and early intervention programs, mid-year 2021****Preschools**

Age Years:months	All students	Aboriginal and Torres Strait Islander students
3 and under	152	29
4-4:11	3,133	427
5-5:11	917	167
6 and over	1	
Total	4,203	623

Early intervention

Age Years:months	All students	Aboriginal and Torres Strait Islander students
3 and under	22	3
4-4:11	286	51
5-5:11	403	61
6 and over		
Total	711	115

Notes:

- Figures reported above are children enrolled in a preschool or an Early Intervention program that is run by a NSW government school. These government preschool classes provide full-time or part-time schooling at pre-primary level.
- In NSW, most children receiving a preschool education are enrolled at a government funded community preschool or in a Long Day Care centre which offers a preschool program.

Table 15**Enrolments (FTE) in distance education by year of schooling, mid-year 2021**

Primary	Boys	Girls	Total
Kindergarten	44	49	93
Year 1	69	54	123
Year 2	72	54	126
Year 3	59	70	129
Year 4	63	65	128
Year 5	67	49	116
Year 6	63	56	119
Primary support	3	2	5
Total	440	399	839

Secondary	Boys	Girls	Total
Year 7	44	31	75
Year 8	114	94	208
Year 9	171	211	382
Year 10	250	317	567
Year 11	122.7	173.3	296.0
Year 12	79.1	95.7	174.8
Secondary support	26	18	44
Total	806.8	940.0	1,746.8

Total all students	1,246.8	1,339.0	2,585.8
---------------------------	----------------	----------------	----------------

Notes:

- All enrolments are reported in full-time equivalent units (FTE), and include full-time and part-time students whose main school is the distance education centre.
- Refer to explanatory note 6.

Table 16

Enrolments (FTE) of Aboriginal students by SA4 groupings and grade group in NSW government schools, mid-year 2021

Statistical area level 4 group	K-2	Y3-6	Primary total	Y7-10	Y11-12	Secondary total	SA4 groups total	% Aboriginal
Sydney-North	129	175	304	159	75.0	234.0	557.0	0.6%
Sydney-Inner	425	575	1,000	507	142.9	649.9	1,699.9	3.0%
Sydney-South	320	425	745	416	146.4	562.4	1,340.4	1.8%
Sydney-South West	1,267	1,636	2,903	1,419	364.8	1,783.8	4,823.8	5.3%
Sydney-West	1,147	1,338	2,485	1,038	300.0	1,338.0	3,975.0	4.3%
Sydney-North West	1,137	1,367	2,504	1,167	289.2	1,456.2	4,022.2	5.9%
Sydney total	4,425	5,516	9,941	4,706	1,318.3	6,024.3	16,418.3	3.5%
North East NSW	2,486	3,515	6,001	3,385	842.6	4,227.6	10,267.6	16.9%
North West NSW	4,623	5,925	10,548	5,558	1,238.0	6,796.0	17,449.0	26.9%
South West NSW	2,255	2,932	5,187	2,726	570.8	3,296.8	8,613.8	16.6%
South East NSW	1,965	2,530	4,495	2,370	557.4	2,927.4	7,505.4	10.5%
Central Coast, Newcastle	2,303	2,870	5,173	2,723	673.3	3,396.3	8,694.3	11.0%
Regional total	13,632	17,772	31,404	16,762	3,882.1	20,644.1	52,530.1	16.0%
NSW	18,058	23,289	41,347	21,468	5,200.4	26,668.4	68,950.4	8.6%
Aboriginal total as a percentage of total NSW enrolments	8.7%	8.4%	8.5%	9.5%	6.2%	8.6%	8.5%	

Notes:

- Students in Distance Education and Opportunity Classes (OC) are included with their appropriate grade levels.
- Aggregate geographical data are reported by groupings of ABS statistical area 4 (refer to the maps).
- From 2020, students in mainstream support classes are reported by their underlying grade of enrolment.
- There were 935 Aboriginal students enrolled in SSPs, representing 15.9% of total SSP enrolments. Aboriginal students in SSPs are not included in the grade group data but are included in the SA4 groups total column.
- NSW total includes Norfolk Island which is not included in SA4 groupings.
- Refer to explanatory notes 2, 9 and 17.

Table 17

Enrolment of students of language background other than English (LBOTE) in NSW government schools, March 2021 by SA4 groupings and grade groups

SA4 groupings	K-2	3-6	Primary total	7-10	11-12	Secondary total	SA4 groups total	% LBOTE
Sydney-North	12,138	15,458	27,596	10,477	4,752	15,229	43,016	47.5%
Sydney-Inner	7,419	9,519	16,938	9,187	4,265	13,452	30,551	52.9%
Sydney-South	11,783	16,010	27,793	12,817	5,921	18,738	46,966	61.0%
Sydney-South West	13,261	19,410	32,671	17,511	7,661	25,172	58,208	63.5%
Sydney-West	19,597	25,322	44,919	15,396	6,314	21,710	67,119	71.9%
Sydney-North West	6,497	8,942	15,439	6,420	3,143	9,563	25,138	36.6%
Sydney total	70,695	94,661	165,356	71,808	32,056	103,864	270,998	56.6%
North East NSW	1,332	1,718	3,050	1,295	505	1,800	4,858	7.8%
North West NSW	1,054	1,306	2,360	1,078	422	1,500	3,876	5.8%
South West NSW	1,191	1,500	2,691	1,109	530	1,639	4,385	8.3%
South East NSW	2,382	3,237	5,619	2,651	1,062	3,713	9,390	12.9%
Central Coast, Newcastle	2,227	3,020	5,247	2,767	1,032	3,799	9,099	11.3%
Regional total	8,186	10,781	18,967	8,900	3,551	12,451	31,608	9.5%
NSW	78,918	105,494	184,412	80,768	35,631	116,399	302,779	37.2%

Notes:

- LBOTE enrolments for 2021 are compared to enrolments (headcount) in March 2021.
- NSW total includes Norfolk Island which is not included in SA4 groupings.
- There were 1,968 LBOTE students enrolled in SSPs, representing 40.2% of total SSP enrolments. This figure is not displayed separately for each SA4 grouping but is included in the SA4 Groups Total column.
- Primary support students are included in Year 3 to 6. Secondary support students are included in Year 7 to 10.
- For more detailed analysis of students of language background other than English, please refer to CESE factsheet – Language Diversity in NSW, 2021.
- Refer to explanatory notes 11 and 17.

Table 18**Enrolments (FTE) in NSW government schools by FOEI quarters and SA4 groupings, April 2021**

SA4 groupings	Quarter 1	Quarter 2	Quarter 3	Quarter 4	Total	Quarter 1 (%)
Sydney-North	2,808	9,466	26,690	51,567	90,531	3.1%
Sydney-Inner	4,776	7,930	16,402	29,353	58,461	8.2%
Sydney-South	15,291	19,620	23,486	18,669	77,066	19.8%
Sydney-South West	34,592	28,040	19,791	9,940	92,363	37.5%
Sydney-West	24,612	20,560	25,197	24,109	94,478	26.1%
Sydney-North West	12,489	16,633	19,169	20,450	68,741	18.2%
Sydney total	94,568	102,249	130,735	154,088	481,640	19.6%
North East NSW	20,840	19,226	13,536	8,239	61,841	33.7%
North West NSW	28,903	20,905	11,379	5,795	66,982	43.2%
South West NSW	20,039	16,748	10,469	5,536	52,792	38.0%
South East NSW	20,008	21,935	17,649	13,067	72,659	27.5%
Central Coast, Newcastle	20,366	23,708	20,095	16,422	80,591	25.3%
Regional total	110,156	102,522	73,128	49,059	334,865	32.9%
NSW	204,724	204,771	203,863	203,147	816,505	25.1%

Notes:

- Enrolments are from system extracts at beginning of Term 2 and are not mid-year census enrolments which are extracted in August.
- Refer to explanatory notes 15 and 17.

Study patterns

Table 19

Primary students in NSW government schools studying a language other than English by year of schooling and language, May 2021

Language name	Kinder	Year 1	Year 2	Year 3	Year 4	Year 5	Year 6	Total
Chinese (Mandarin)	1,802	2,425	2,293	2,600	2,553	2,102	1,984	15,759
Arabic	1,368	1,507	1,564	1,594	1,655	1,354	1,315	10,357
Italian	1,148	1,189	1,435	1,648	1,447	1,390	1,023	9,280
Japanese	1,255	817	717	781	824	712	902	6,008
Vietnamese	610	658	655	648	631	567	598	4,367
French	546	607	579	439	547	461	499	3,678
Wiradjuri	447	548	593	504	503	487	476	3,558
Greek	448	521	459	437	394	404	438	3,101
Gumbaynggir / Gumbanggir	327	407	415	305	332	347	419	2,552
Korean	420	431	404	363	320	230	271	2,439
Bundjalung	221	200	233	308	282	271	285	1,800
Indonesian	82	83	65	212	212	376	369	1,399
Gamilaraay / Gamilaroi / Kamilaroi	206	205	197	214	170	221	184	1,397
Spanish	123	138	149	180	189	241	229	1,249
Hindi	96	203	250	223	150	169	129	1,220
Dhanggatti / Dunghutti / Dainggatti / Thunghutti	149	132	112	101	98	132	127	851
Assyrian	74	96	94	113	126	160	160	823
German	71	99	78	105	106	112	119	690
Awakabal	91	87	97	100	96	106	109	686
Tamil	69	63	64	83	83	76	77	515
Macedonian	55	65	91	67	82	55	88	503
Bengali	103	67	85	58	61	40	37	451
Dharug / Darug	86	53	76	55	63	53	44	430
Hebrew	75	62	83	52	60	31	51	414
Dhurga	40	43	77	79	59	69	28	395
Khmer	51	31	43	53	50	47	57	332
Punjabi	47	40	56	55	46	71		315
Auslan	24	21	29	42	52	58	62	288
Paakantji / Barkindji	28	45	38	28	41	49	59	288
Turkish	41	43	47	37	40	35	36	279
Urdu	48	40	39	45	33	30	31	266
Gujarati	26	29	23	35	35	29	35	212

Table 19**Primary students in NSW government schools studying a language other than English by year of schooling and language, May 2021 (continued)**

Language name	Kinder	Year 1	Year 2	Year 3	Year 4	Year 5	Year 6	Total
Dari	27	29	35	27	33	22	35	208
Telugu	24	27	30	35	29	22	29	196
Yuwaalaraay / Yuwaalayaay	26	19	30	23	35	25	24	182
Norf'K-Pitcairn	24	24	23	20	22	27	23	163
Serbian		23	26	19	23	32	25	148
Nepali	28	26	24	20	25	11	13	147
Birpai / Biripi						78	65	143
Samoan	26	7	12	13	13	13	9	93
Greek (Modern)		22	14		28		20	84
Russian	11	13	8	10	7	7	8	64
Maori (New Zealand)	6	3	9	10	10	9	11	58
Maori	4	2	7	8	4	5	7	37
Gathang / Kattang		5	4	4	1	3	2	19
Ngemba / Ngiyampaa	1	1	3	4	1	2	3	15
Farsi	1	3	3	2	1		4	14
Sign Languages	2	3	1	1	6		1	14
Tongan	1	2	1	2	1	1	1	9
Muruwari / Murrawarri		1	2	2		1		6
Gundungurra / Gundungura / Gandangara	1	1						2
Total	10,359	11,166	11,372	11,764	11,579	10,743	10,521	77,504

Notes:

- The table includes data from the K-6 Community Languages Program (CLP) and the K-6 Languages Program (non-CLP) collections.
- Students may study more than one language.
- Students in Distance Education and Opportunity Classes (OC) are included with their appropriate grade levels.
- From 2021, students in support classes who studied a language other than English are recorded against the grade of the student group they learnt with.

Table 20

Language participation Year 7-9 by gender and year of schooling, May 2021

Language name	Year 7			Year 8			Year 9			All students		
	Boys	Girls	Total	Boys	Girls	Total	Boys	Girls	Total	Boys	Girls	Total
Japanese	5,980	5,298	11,278	6,374	5,811	12,185	1,201	1,644	2,845	13,555	12,753	26,308
French	3,327	3,134	6,461	3,183	3,663	6,846	343	683	1,026	6,853	7,480	14,333
Italian	1,349	1,361	2,710	1,184	1,325	2,509	62	99	161	2,595	2,785	5,380
Chinese (Mandarin)	1,025	1,053	2,078	1,183	938	2,121	181	247	428	2,389	2,238	4,627
Spanish	971	830	1,801	977	815	1,792	65	123	188	2,013	1,768	3,781
Indonesian	785	781	1,566	431	399	830	20	64	84	1,236	1,244	2,480
German	499	438	937	508	429	937	129	123	252	1,136	990	2,126
Korean	288	172	460	384	433	817	35	71	106	707	676	1,383
Latin	129	80	209	162	218	380	52	61	113	343	359	702
Wiradjuri	161	158	319	171	167	338	12	2	14	344	327	671
Greek (Modern)	71	24	95	256	240	496	14	33	47	341	297	638
Gumbaynggir / Gumbanggir	166	166	332				13	11	24	179	177	356
Arabic	12	43	55	53	149	202	28	42	70	93	234	327
Gamilaraay / Gamilaroi / Kamilaroi	102	99	201	43	64	107				145	163	308
Dhurga	98	101	199							98	101	199
Vietnamese	46	47	93	41	30	71	7	16	23	94	93	187
Gathang / Kattang	73	77	150							73	77	150
Wamba Wamba	59	43	102							59	43	102
Auslan	26	27	53	22	23	45				48	50	98
Nagarabal / Ngorabul / Yugambal	44	46	90							44	46	90
Wonnarua	46	40	86							46	40	86
Paakantji / Barkindji	17	20	37	18	20	38				35	40	75
Macedonian	11	11	22	5	15	20	11	17	28	27	43	70
Serbian	6	5	11	6	10	16	7	25	32	19	40	59
Ngemba / Ngiyampaa	11	17	28	17	13	30				28	30	58
Chinese (Cantonese)	33	20	53		1	1				33	21	54
Turkish	7	10	17	2	12	14	9	10	19	18	32	50
Punjabi	11	2	13	6	6	12	13	7	20	30	15	45
Polish	6	5	11	8	10	18	3	7	10	17	22	39

Table 20

Language participation Year 7-9 by gender and year of schooling, May 2021 (continued)

Language name	Year 7			Year 8			Year 9			All students		
	Boys	Girls	Total	Boys	Girls	Total	Boys	Girls	Total	Boys	Girls	Total
Yuwaalaraay / Yuwaalayaay	1	2	3	14	16	30				15	18	33
Hindi	9	2	11	7	3	10	2	3	5	18	8	26
Norfolk-Pitcairn	17	7	24							17	7	24
Darkinjung / Darkinyung	3	2	5	2		2	8	6	14	13	8	21
Hebrew		2	2	15	1	16				15	3	18
Russian				2		2	4	9	13	6	9	15
Greek (Classical)				6		6	2	5	7	8	5	13
Armenian	1	4	5	2	2	4	2		2	5	6	11
Bosnian	3	2	5	2	1	3	1	2	3	6	5	11
Portuguese	1		1		5	5	1	4	5	2	9	11
Croatian					4	4	2	4	6	2	8	10
Wailwan	4	1	5	2	3	5				6	4	10
Samoan	1	3	4		1	1				1	4	5
Maltese	2		2							2		2
Thai	1		1							1		1
Total	15,402	14,133	29,535	15,086	14,827	29,913	2,227	3,318	5,545	32,715	32,278	64,993

Notes:

- The table includes students studying a language through the Secondary College of Languages (formerly Saturday School of Community Languages).
- The table includes only students learning a language on average for 1 hour or more per week for 35 or more weeks a year.
- There were an additional 20,624 students who were learning a language for a shorter duration.
- In 2021, the Language Participation Collection for Years 7-9 students was moved from August to May.

Table 21

Board Developed Course enrolments in Year 10 subjects in NSW government schools, 2021

Course ID	Course name	Hours	Boys	Girls	Total
300	English	200	26,468	24,978	51,446
302	English (Life Skills)		1,558	622	2,180
323	Mathematics	200	26,484	25,028	51,512
325	Mathematics (Life Skills)		1,546	623	2,169
350	Science	200	26,410	24,980	51,390
352	Science (Life Skills)		1,543	619	2,162
410	Aboriginal Studies	200	101	151	252
411	Aboriginal Studies	100	63	67	130
412	Aboriginal Studies (Life Skills)		6	3	9
414	Aboriginal Studies Life Skills	100	13	1	14
430	Commerce	200	5,450	4,910	10,360
431	Commerce	100	1,305	1,303	2,608
433	Commerce Life Skills	100	8	4	12
434	Commerce Life Skills	200	11	5	16
440	Geography	200	185	114	299
441	Geography	100	150	210	360
450	History	200	1,609	1,662	3,271
451	History	100	788	871	1,659
453	History Elective Life Skills	100	1	4	5
454	History Elective Life Skills	200	6	3	9
500	Work Education	200	243	259	502
501	Work Education	100	505	396	901
503	Work Education Life Skills	100	104	31	135
504	Work Education Life Skills	200	196	74	270
790	Aboriginal Languages	200	6	8	14
791	Aboriginal Languages	100	1	5	6
792	Aboriginal Languages (Life Skills)		16	6	22
800	Arabic	200	18	48	66
801	Arabic	100		9	9
804	Arabic Life Skills	200		4	4
810	Chinese	200	147	209	356
811	Chinese	100	43	73	116
813	Chinese Life Skills	200	6	1	7
814	Chinese Life Skills	100	2	2	4
820	Classical Greek	200	2	8	10
870	French	200	233	585	818

Table 21

Board Developed Course enrolments in Year 10 subjects in NSW government schools, 2021 (continued)

Course ID	Course name	Hours	Boys	Girls	Total
871	French	100	44	86	130
873	French Life Skills	200	9	3	12
874	French Life Skills	100	3	2	5
880	German	200	83	81	164
881	German	100	17	12	29
910	Indonesian	200	15	39	54
911	Indonesian	100	7	5	12
914	Indonesian Life Skills	200	1	1	2
920	Italian	200	43	102	145
921	Italian	100	30	63	93
923	Italian Life Skills	100	11	1	12
924	Italian Life Skills	200	4	1	5
930	Japanese	200	838	1,026	1,864
931	Japanese	100	261	268	529
933	Japanese Life Skills	200	2	2	4
940	Korean	200	25	26	51
941	Korean	100	9	15	24
950	Latin	200	39	88	127
951	Latin	100	1	2	3
981	Macedonian	200	4	1	5
982	Macedonian	100	1		1
990	Modern Greek	200	13	15	28
1010	Russian	200	3	6	9
1011	Russian	100	1	3	4
1040	Spanish	200	51	95	146
1041	Spanish	100	32	58	90
1043	Spanish Life Skills	200		3	3
1044	Spanish Life Skills	100	3		3
1050	Turkish	200	3	5	8
1051	Turkish	100		3	3
1071	Vietnamese	200	10	16	26
1072	Vietnamese	100	2	6	8
1605	Agricultural Technology	200	2,067	1,624	3,691
1606	Agricultural Technology	100	667	587	1,254
1608	Agricultural Technology Life Skills	100	37	17	54
1609	Agricultural Technology Life Skills	200	59	21	80

Table 21

Board Developed Course enrolments in Year 10 subjects in NSW government schools, 2021 (continued)

Course ID	Course name	Hours	Boys	Girls	Total
1625	Food Technology	200	4,101	6,799	10,900
1626	Food Technology	100	1,599	1,972	3,571
1628	Food Technology Life Skills	100	128	60	188
1629	Food Technology Life Skills	200	298	136	434
1650	Design and Technology	200	674	501	1,175
1651	Design and Technology	100	407	241	648
1653	Design & Technology Life Skills	100	26	2	28
1654	Design & Technology Life Skills	200	72	25	97
1700	Graphics Technology	200	488	233	721
1701	Graphics Technology	100	184	76	260
1703	Graphics Technology Life Skills	100	1		1
1704	Graphics Technology Life Skills	200	5		5
1800	Industrial Technology (Automotive)	200	100	7	107
1801	Industrial Technology (Automotive)	100	73	9	82
1802	Industrial Technology (Building and Construction)	200	329	33	362
1803	Industrial Technology (Building and Construction)	100	216	27	243
1806	Industrial Technology (Electronics)	200	343	18	361
1807	Industrial Technology (Electronics)	100	228	16	244
1808	Industrial Technology (Engineering)	200	2,161	157	2,318
1809	Industrial Technology (Engineering)	100	580	91	671
1810	Industrial Technology (Farm Maintenance)	200	20		20
1811	Industrial Technology (Farm Maintenance)	100	7	3	10
1814	Industrial Technology (Metal)	200	1,686	155	1,841
1815	Industrial Technology (Metal)	100	811	184	995
1816	Industrial Technology (Multimedia/Photography)	200	678	214	892
1817	Industrial Technology (Multimedia/Photography)	100	325	124	449
1820	Industrial Technology (Timber)	200	5,406	1,031	6,437
1821	Industrial Technology (Timber)	100	1,492	502	1,994
1830	Information & Software Technology	200	3,077	898	3,975
1831	Information & Software Technology	100	813	245	1,058
1832	Information & Software Technology (Life Skills)		49	12	61
1833	Information and Software Technology Life Skills	100	49	21	70
1861	Industrial Technology – Building & Construction Life Skills	100	5		5
1864	Industrial Technology – Engineering Life Skills	100	3		3
1867	Industrial Technology – Metal Life Skills	100	18	2	20
1868	Industrial Technology – Multimedia Life Skills	100	2		2

Table 21

Board Developed Course enrolments in Year 10 subjects in NSW government schools, 2021 (continued)

Course ID	Course name	Hours	Boys	Girls	Total
1870	Industrial Technology – Timber Life Skills	100	52	9	61
1880	Industrial Technology – Automotive Life Skills	200	1		1
1881	Industrial Technology – Building & Construction Life Skills	200	5	1	6
1883	Industrial Technology – Electronics Life Skills	200	2		2
1884	Industrial Technology – Engineering Life Skills	200	9		9
1887	Industrial Technology – Metal Life Skills	200	24	5	29
1888	Industrial Technology – Multimedia Life Skills	200	6		6
1890	Industrial Technology – Timber Life Skills	200	97	11	108
1900	Textiles Technology	200	38	796	834
1901	Textiles Technology	100	81	581	662
1903	Textiles Technology Life Skills	100	2	6	8
1906	Textiles Technology Life Skills	200		3	3
2000	Dance	200	59	1,212	1,271
2001	Dance	100	20	244	264
2002	Dance (Life Skills)		6	13	19
2003	Dance Life Skills	100	4	5	9
2010	Drama	200	842	2,018	2,860
2011	Drama	100	334	628	962
2012	Drama (Life Skills)		36	23	59
2013	Drama Life Skills	100	19	14	33
2050	Music	200	3,255	3,038	6,293
2051	Music	100	1,029	813	1,842
2052	Music (Life Skills)		173	66	239
2053	Music Life Skills	100	99	45	144
2060	Visual Arts	200	2,172	5,362	7,534
2061	Visual Arts	100	731	1,398	2,129
2062	Visual Arts (Life Skills)		342	149	491
2063	Visual Arts Life Skills	100	152	75	227
2070	Visual Design	200	261	512	773
2071	Visual Design	100	171	379	550
2072	Visual Design (Life Skills)		7	6	13
2073	Visual Design Life Skills	100	2	5	7
2080	Photographic and Digital Media	200	1,160	2,348	3,508
2081	Photographic and Digital Media	100	713	1,014	1,727
2082	Photographic and Digital Media (Life Skills)		25	16	41
2083	Photographic and Digital Media Life Skills	100	15	8	23

Table 21

Board Developed Course enrolments in Year 10 subjects in NSW government schools, 2021 (continued)

Course ID	Course name	Hours	Boys	Girls	Total
2420	Personal Development, Health and P.E.	200	21,820	20,805	42,625
2421	Personal Development, Health and P.E.	100	4,208	3,735	7,943
2423	Personal Development, Health and P.E. Life Skills		1,504	604	2,108

Number of students meeting the curriculum requirements for the Record of School Achievement (RoSA), Year 10 students in NSW government schools, 2021

	Boys	Girls	Total
Number of students	27,482	25,236	52,718

Source: Department of Education, data derived from NSW Education Standards Authority (NESA) data, February 2021.

Notes:

- The table only includes Board Developed Courses.
- The table includes students studying a language through the Secondary College of Languages (formerly Saturday School of Community Languages).
- Hours equal to the number of hours studied over Years 9 and 10.
- From 2012, eligible students who leave school before receiving their HSC will receive the NSW RoSA.
- Students need to complete the mandatory requirements for Stage 5 (Year 10) to be eligible for a RoSA. They must have:
 - attended a government school, an accredited non-government school or a recognised school outside NSW;
 - undertaken and completed courses of study that satisfy NESA curriculum and assessment requirements for the Record of School Achievement;
 - complied with any other regulations or requirements (such as attendance) imposed by the Minister or NESA; and
 - completed Year 10.
- Students intending to leave school before completing their HSC can take optional online literacy and numeracy tests. They are designed to provide an overview of a student's level of achievement in these areas.
- Students are required to complete the following mandatory curriculum for the RoSA:
 - English
 - Mathematics
 - Science
 - Human Society and its Environments
 - Languages other than English
 - Technological and Applied Studies
 - Creative Arts
 - Personal Development, Health and Physical Education.

Table 22

Course enrolments in Year 11 and Year 12 subjects in NSW government schools, 2021

Course name	Units	Year 11			Year 12		
		Boys	Girls	Total	Boys	Girls	Total
Aboriginal Studies	2	295	732	1,027	131	444	575
Aboriginal Studies Life Skills	2	42	21	63	29	17	46
Agriculture	2	694	636	1,330	372	477	849
Agriculture Life Skills	2	48	17	65	42	20	62
Ancient History	2	2,722	3,156	5,878	1,794	2,202	3,996
Ancient History Life Skills	2	68	42	110	66	37	103
Arabic Continuers	2	78	134	212	46	120	166
Arabic Extension	1				6	25	31
Armenian Continuers	2	3	1	4		7	7
Automotive	2	28	4	32	14		14
Automotive	4	7		7			
Automotive Examination (Mechanical Technology)	2				10		10
Automotive Examination (Vehicle Body)	2				1		1
Biology	2	5,119	9,085	14,204	3,827	6,666	10,493
Business and Economics Life Skills	2	44	28	72	35	16	51
Business Services	2	468	964	1,432	303	674	977
Business Services	4	1	3	4	16	40	56
Business Services Examination	2				231	535	766
Business Services Specialisation Study	1				1	3	4
Business Studies	2	6,666	5,817	12,483	4,499	4,146	8,645
Chemical World Science Life Skills	2	19	7	26	4	3	7
Chemistry	2	4,351	4,093	8,444	2,977	2,691	5,668
Chinese and Literature	2	158	143	301	124	151	275
Chinese Beginners	2	22	35	57	12	41	53
Chinese Continuers	2	19	42	61	28	41	69
Chinese Extension	1				1	12	13
Chinese in Context	2	49	81	130	35	50	85
Citizenship and Legal Studies Life Skills	2	39	12	51	14	15	29
Classical Greek Continuers	2	1		1	1	4	5
Classical Greek Extension	1				1		1
Community and Family Studies	2	935	6,629	7,564	529	4,871	5,400
Community and Family Studies Life Skills	2	83	112	195	70	110	180
Construction	2	3,283	258	3,541	1,754	115	1,869
Construction	4	21	2	23	19	1	20

Table 22

Course enrolments in Year 11 and Year 12 subjects in NSW government schools, 2021 (continued)

Course name	Units	Year 11			Year 12		
		Boys	Girls	Total	Boys	Girls	Total
Construction Examination	2				1,196	72	1,268
Construction School-based Apprenticeship	2	6		6	2		2
Creative Arts Life Skills	2	395	179	574	274	130	404
Croatian Continuers	2	2		2			
Dance	2	30	666	696	30	565	595
Dance Life Skills	2	1	5	6	1	13	14
Design and Technology	2	1,461	846	2,307	813	519	1,332
Design and Technology Life Skills	2	67	37	104	37	23	60
Drama	2	728	1,401	2,129	583	1,327	1,910
Drama Life Skills	2	30	21	51	44	27	71
Earth and Environmental Science	2	1,026	940	1,966	679	792	1,471
Earth and Space Science Life Skills	2	54	16	70	48	13	61
Economics	2	2,482	1,337	3,819	1,466	869	2,335
Electrotechnology	2	6	1	7	8	1	9
Electrotechnology Examination	2				6	1	7
Engineering Studies	2	2,165	276	2,441	1,429	159	1,588
English (Advanced)	2	5,475	8,158	13,633	4,687	6,921	11,608
English (Standard)	2	10,203	10,099	20,302	8,335	9,172	17,507
English EAL/D	2	701	770	1,471	677	804	1,481
English Extension	1	1,067	1,818	2,885			
English Extension 1	1				481	1,123	1,604
English Extension 2	1				168	472	640
English Life Skills	2	1,363	666	2,029	1,190	581	1,771
English Studies	2	4,203	2,531	6,734	3,418	2,513	5,931
English Studies Examination	2				1,258	830	2,088
Entertainment Industry	2	458	393	851	385	375	760
Entertainment Industry	4				22	18	40
Entertainment Industry Examination	2				312	337	649
Entertainment Industry Specialisation Study	1	29	9	38	177	154	331
Entertainment Industry Specialisation Study	2				5	5	10
Filipino Continuers	2	1	6	7		4	4
Financial Services	2	17	6	23	6	12	18
Financial Services	4					1	1
Financial Services Examination	2				6	13	19

Table 22

Course enrolments in Year 11 and Year 12 subjects in NSW government schools, 2021 (continued)

Course name	Units	Year 11			Year 12		
		Boys	Girls	Total	Boys	Girls	Total
Food Technology	2	1,216	2,124	3,340	683	1,506	2,189
Food Technology Life Skills	2	355	182	537	279	144	423
French Beginners	2	67	272	339	45	195	240
French Continuers	2	60	187	247	40	162	202
French Extension	1				6	33	39
Geography	2	1,229	1,079	2,308	907	976	1,883
Geography Life Skills	2	88	31	119	53	34	87
German Beginners	2	26	38	64	25	42	67
German Continuers	2	46	43	89	23	39	62
German Extension	1				5	10	15
Hindi Continuers	2	9	8	17	6	3	9
History Extension	1				241	439	680
Hospitality	2	2,155	4,262	6,417	1,424	3,071	4,495
Hospitality	4	16	21	37	130	177	307
Hospitality Examination (Food and Beverage)	2				583	1,660	2,243
Hospitality Examination (Kitchen Operations and Cookery)	2				545	842	1,387
Hospitality Specialisation Study	2				3	4	7
Human Services	2	20	168	188	29	229	258
Human Services	4		9	9			
Human Services Examination	2				17	126	143
Human Services Specialisation Study	1					2	2
Human Society and its Environment Life Skills	2	484	223	707	372	189	561
IDT Examination (Digital Animation)	2				8	2	10
IDT Examination (Networking and Hardware)	2				7	2	9
IDT Examination (Web and Software Applications)	2				154	32	186
Indonesian and Literature	2	2	4	6	1	6	7
Indonesian Beginners	2	6	14	20	2	6	8
Indonesian Continuers	2	8	28	36	10	20	30
Indonesian Extension	1				2	6	8
Industrial Technology	2	5,200	1,067	6,267	2,925	612	3,537
Industrial Technology Life Skills	2	195	33	228	161	19	180
Information and Digital Technology	2	291	78	369	208	39	247
Information and Digital Technology	4	4		4	2		2
Information and Digital Technology Specialisation Study	1				1		1
Information and Digital Technology Specialisation Study	2	1		1	4		4

Table 22

Course enrolments in Year 11 and Year 12 subjects in NSW government schools, 2021 (continued)

Course name	Units	Year 11			Year 12		
		Boys	Girls	Total	Boys	Girls	Total
Information and Digital Technology Specialisation Study	3				26	5	31
Information Processes and Technology	2	1,169	342	1,511	946	247	1,193
Information Processes and Technology Life Skills	2	83	10	93	57	15	72
Investigating Science	2	1,518	1,135	2,653	1,085	907	1,992
Investigating Science Life Skills	2	361	160	521	258	102	360
Italian Beginners	2	35	100	135	37	82	119
Italian Continuers	2	18	34	52	8	30	38
Italian Extension	1				3	6	9
Japanese and Literature	2				3	8	11
Japanese Beginners	2	406	430	836	188	225	413
Japanese Continuers	2	317	438	755	189	279	468
Japanese Extension	1				49	80	129
Japanese in Context	2	19	25	44	6	19	25
Khmer Continuers	2	5	7	12	2	6	8
Korean and Literature	2	12	23	35	11	11	22
Korean Beginners	2	16	119	135	12	74	86
Korean Continuers	2	3	8	11		12	12
Korean in Context	2	17	38	55	10	27	37
Latin Continuers	2	17	43	60	31	28	59
Latin Extension	1				18	21	39
Legal Studies	2	3,065	5,147	8,212	2,095	3,830	5,925
Living World Science Life Skills	2	114	58	172	74	48	122
Macedonian Continuers	2	1	9	10	7	9	16
Maltese Continuers	2					1	1
Mathematics Advanced	2	6,866	6,009	12,875	4,478	3,934	8,412
Mathematics Extension	1	3,571	2,638	6,209			
Mathematics Extension 1	2				2,814	1,865	4,679
Mathematics Extension 2	2				1,272	692	1,964
Mathematics Life Skills	2	1,288	573	1,861	1,083	487	1,570
Mathematics Standard	2	11,292	11,599	22,891			
Mathematics Standard 1	2				1,988	1,593	3,581
Mathematics Standard 1 Examination	2				866	795	1,661
Mathematics Standard 2	2				7,379	8,399	15,778
Modern Greek Beginners	2	5	19	24	12	11	23
Modern Greek Continuers	2	3	23	26	4	10	14

Table 22

Course enrolments in Year 11 and Year 12 subjects in NSW government schools, 2021 (continued)

Course name	Units	Year 11			Year 12		
		Boys	Girls	Total	Boys	Girls	Total
Modern Greek Extension	1				3		3
Modern Hebrew Continuers	2	1		1			
Modern History	2	3,842	3,756	7,598	2,791	3,006	5,797
Modern History Life Skills	2	95	41	136	68	32	100
Music 1	2	1,978	1,618	3,596	1,475	1,396	2,871
Music 2	2	272	244	516	184	197	381
Music Extension	1				99	112	211
Music Life Skills	2	121	53	174	87	49	136
Persian Continuers	2	8	20	28	6	17	23
Personal Development, Health & PE Life Skills	2	928	395	1,323	710	327	1,037
Personal Development, Health and Physical Education	2	4,767	6,092	10,859	3,787	5,069	8,856
Physical World Science Life Skills	2	14	2	16	20	3	23
Physics	2	4,835	1,472	6,307	3,645	987	4,632
Polish Continuers	2	1	5	6	3		3
Portuguese Continuers	2	4	6	10	4	3	7
Primary Industries	2	669	400	1,069	317	266	583
Primary Industries	4	18	10	28	18	28	46
Primary Industries Examination	2				207	225	432
Primary Industries Specialisation Study	1				9	3	12
Primary Industries Specialisation Study	2				12	7	19
Primary Industries Specialisation Study	4				1	8	9
Punjabi Continuers	2	8	12	20	9	9	18
Retail Services	2	580	922	1,502	419	763	1,182
Retail Services	4		11	11	21	34	55
Retail Services Examination	2				296	574	870
Russian Continuers	2	7	21	28	5	6	11
Science Extension	1				120	157	277
Serbian Continuers	2	7	11	18	4	5	9
Society and Culture	2	1,046	3,820	4,866	632	2,546	3,178
Society and Culture Life Skills	2	18	23	41	51	37	88
Software Design and Development	2	1,553	239	1,792	957	119	1,076
Spanish Beginners	2	74	168	242	50	129	179
Spanish Continuers	2	27	52	79	21	46	67
Spanish Extension	1				4	10	14
Studies of Religion I	1	233	231	464	110	123	233

Table 22

Course enrolments in Year 11 and Year 12 subjects in NSW government schools, 2021 (continued)

Course name	Units	Year 11			Year 12		
		Boys	Girls	Total	Boys	Girls	Total
Studies of Religion I Life Skills	1				2		2
Studies of Religion II	2	229	573	802	137	423	560
Studies of Religion II Life Skills	2	6	10	16	2	4	6
Tamil Continuers	2	3	1	4	1		1
Technology Life Skills	2	330	141	471	246	103	349
Textiles and Design	2	72	1,264	1,336	37	660	697
Textiles and Design Life Skills	2	5	18	23	3	12	15
Tourism, Travel and Events	2	1	7	8			
Turkish Continuers	2	9	17	26	3	16	19
Vietnamese Continuers	2	75	109	184	78	133	211
Visual Arts	2	1,882	4,723	6,605	1,228	3,663	4,891
Visual Arts Life Skills	2	285	209	494	264	180	444
Work and the Community Life Skills	2	792	384	1,176	664	294	958

Source: Department of Education, data derived from NSW Education Standards Authority (NESA) data, February 2022.

Note:

- Based on school of tuition, NESA developed courses only, and includes subjects studied through distance education, the NSW School of Languages and Aurora College.

Progress measures

Table 23

Apparent retention (%) in NSW government schools, 2011-2021

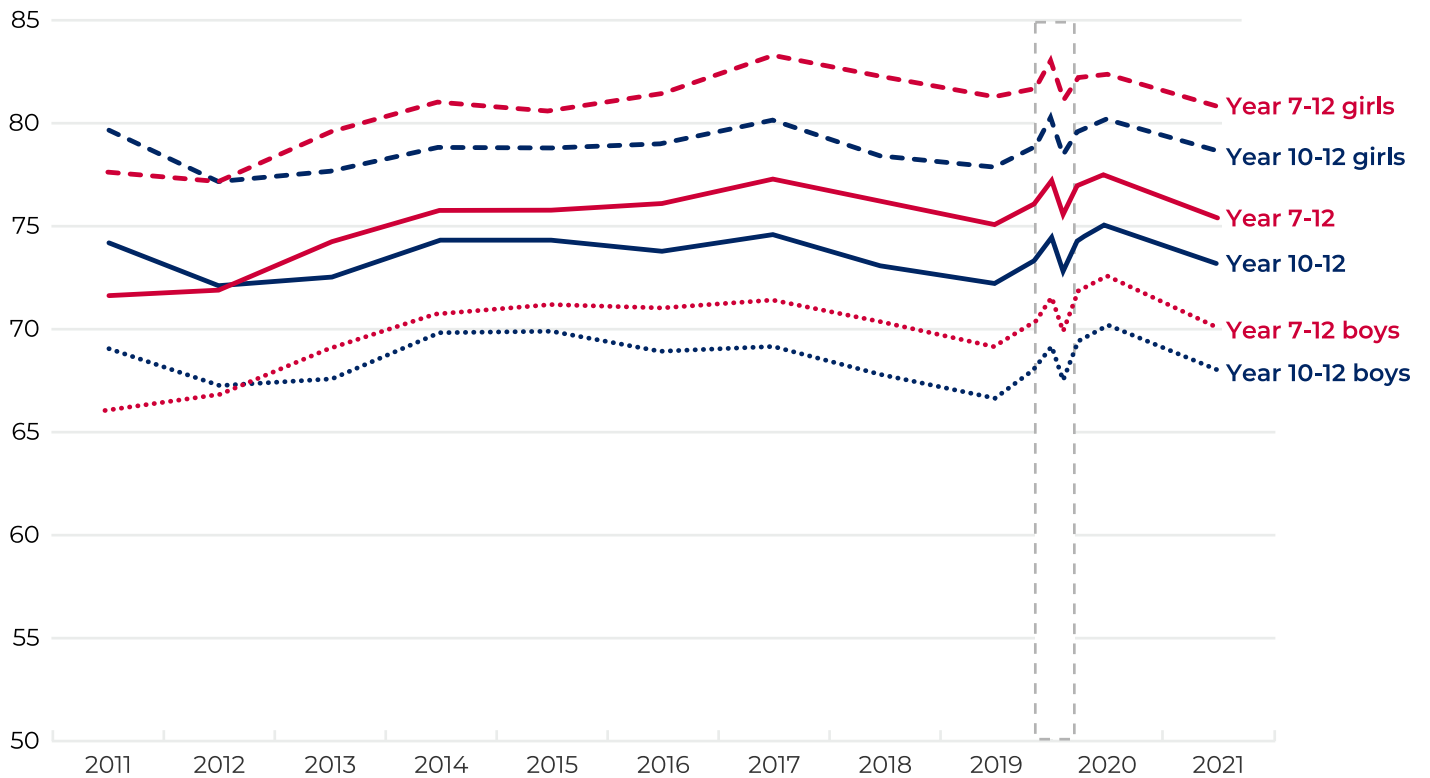
Year	Year 7-10			Year 7-11			Year 7-12			Year 10-11			Year 10-12		
	Boys	Girls	Total	Boys	Girls	Total	Boys	Girls	Total	Boys	Girls	Total	Boys	Girls	Total
2011	102.2	102.4	102.3	83.3	91.3	87.2	66.1	77.6	71.7	83.7	91.1	87.3	69.1	79.7	74.3
2012	101.4	102.8	102.1	86.1	93.3	89.6	66.9	77.4	72.0	84.3	91.0	87.6	67.3	77.3	72.2
2013	102.0	102.1	102.0	88.1	94.6	91.3	69.0	79.7	74.3	86.9	92.0	89.4	67.6	77.8	72.6
2014	103.0	103.2	103.1	89.3	94.9	92.1	70.9	81.2	75.9	87.6	92.9	90.2	69.9	79.0	74.4
2015	103.3	103.9	103.6	90.2	95.9	93.0	71.3	80.7	75.9	87.6	93.0	90.2	70.0	79.0	74.4
2016	103.7	105.0	104.3	89.4	96.9	93.1	71.1	81.6	76.2	86.5	93.3	89.9	69.0	79.1	73.9
2017	103.7	104.4	104.0	88.8	96.0	92.4	71.5	83.4	77.4	85.6	91.5	88.5	69.2	80.3	74.7
2018	103.4	103.1	103.2	86.7	95.2	90.9	70.4	82.4	76.3	83.6	91.2	87.3	67.8	78.5	73.1
2019	103.0	102.7	102.8	86.2	93.9	90.0	69.2	81.4	75.2	83.4	91.1	87.2	66.7	78.0	72.3
2020	107.7	104.4	106.1	89.3	95.0	92.0	72.6	82.5	77.5	86.7	92.5	89.5	70.2	80.1	75.0
2021	105.1	101.0	103.1	86.0	91.0	88.5	70.1	80.9	75.4	79.9	87.2	83.4	68.1	78.8	73.3

Notes:

- Apparent retention is based on full-time equivalent (FTE) units, including full-time and part-time students. Students enrolled in distance education classes are included with their appropriate grade levels.
- Legislation raising the minimum school leaving age from 15 to 17 came into effect in January 2010. The Year 12 cohort in 2012 was the first group of students who were required to complete Year 10. This meant that the Year 10 enrolment figure was higher than in previous years, resulting in a relative decline in Year 10 to Year 12 apparent retention in 2012, despite the Year 7 to Year 12 apparent retention rate increasing slightly.
- From 2020, students in mainstream support classes (previously excluded from this calculation) are reported by their underlying grade of enrolment. This results in a rolling break in time-series for apparent retention rates because enrolments increased in 2020 due to the revised counting rule. For more detail, please refer to CESE factsheet 'NSW public school student retention rates by statistical areas'.
- Refer to explanatory note 10.

Figure 6

Apparent retention (%) in NSW government schools, 2011-2021

**Note:**

- From 2020, students in mainstream support classes (previously excluded from this calculation) are reported by their underlying grade of enrolment. This results in a rolling break in time-series for apparent retention rates because enrolments increased in 2020 due to the revised counting rule. For more detail, please refer to CESE factsheet 'NSW public school student retention rates by statistical areas'.

Table 24**NSW government school HSC completions, 2016-2021**

Number of Students	2016	2017	2018	2019	2020	2021
Students who completed one or more HSC courses (all students)	44,029	44,320	42,887	41,415	42,106	41,608
Students who completed one or more HSC courses (Aboriginal students)	2,100	2,108	2,054	2,123	2,192	2,166
HSC Award (all students)	38,589	38,775	38,100	36,886	36,910	36,698
HSC Award (Aboriginal students)	1,711	1,700	1,671	1,804	1,805	1,774

Source: Department of Education, data derived from NSW Education Standards Authority (NESA) and National Schools Statistics Collection (NSSC) data, February 2022.

Notes:

- Identification of Aboriginal students in this table is based on Aboriginal status reported in the National Schools Statistics Collection (NSSC) conducted each August, rather than the NESA data.
- Students who have completed one or more HSC courses but have not yet been awarded the HSC receive a Record of Achievement.
- HSC pathways offer a flexible program for students to complete the HSC over a period of up to five years. The pathways provisions include accumulating courses, repeating courses, acceleration, recognition of prior learning and combining study with part-time traineeships or apprenticeships. These students are included in the count of students who have completed one or more HSC courses.
- Bradfield college included.
- Refer to explanatory note 13.

Table 25**Semester 1 attendance rates (%) in NSW government schools by Aboriginality, Years 1-10 2021**

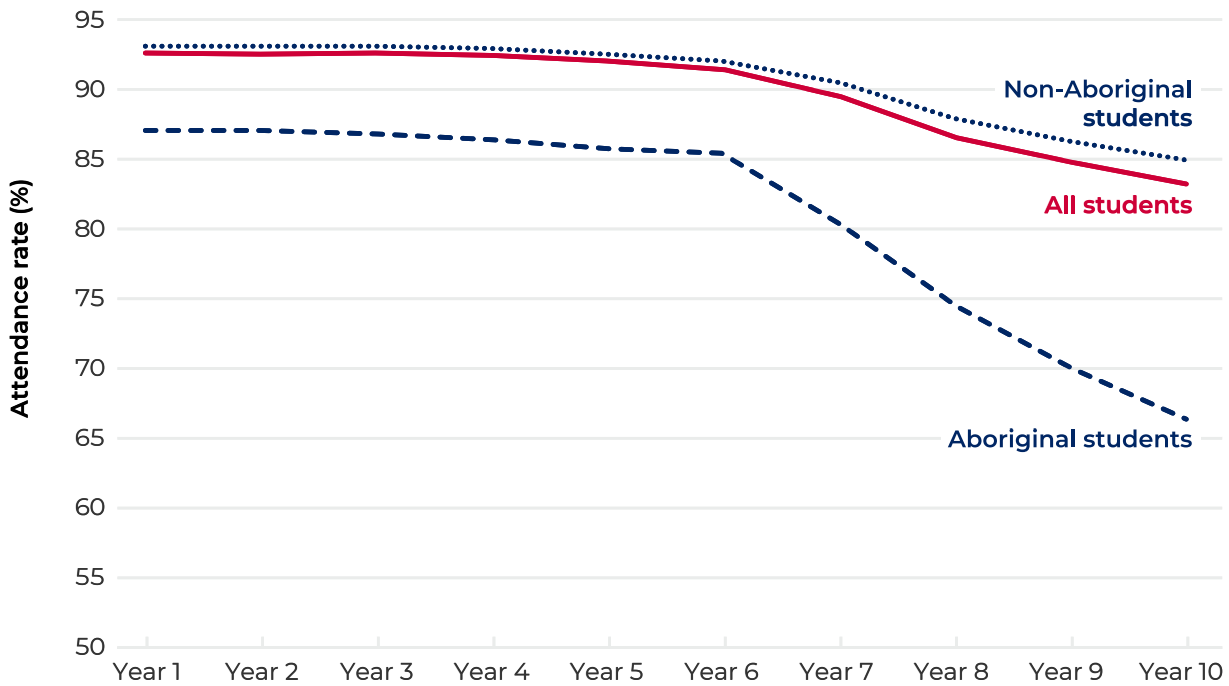
Year	Aboriginal students	Non-Aboriginal students	All students
Year 1	87.1	93.2	92.7
Year 2	87.1	93.2	92.6
Year 3	86.9	93.2	92.7
Year 4	86.5	93	92.5
Year 5	85.8	92.6	92.1
Year 6	85.5	92.1	91.5
Primary ungraded	80.9	85.2	84.6
Primary total (Years 1-6 including support)	86.5	92.9	92.3
Year 7	80.6	90.6	89.7
Year 8	74.7	88	86.7
Year 9	70.2	86.4	84.9
Year 10	66.5	85	83.3
Junior Secondary ungraded	63.8	77.1	74.7
Secondary total (Years 7-10 including support)	73.0	87.4	86.1
Years 1-10 (including support)	81.4	90.9	90.1

Notes:

- The attendance data are for full-time, Year 1-10 students only (including support) in Semester 1 2021.
- All students in Years 1 to 10 in NSW government schools are regarded as full-time.
- From 2020, students in mainstream support classes are reported by their underlying grade of enrolment. Students in schools for specific purposes (SSPs) are included as 'ungraded'.
- For more detailed analysis of Semester 1 school attendance, please refer to CESE factsheet '2021 Semester 1 student attendance'.
- Although there were no state-wide or regional lockdowns in NSW during Semester 1 2021, COVID-19 continued to affect student attendance. For more detail on how attendance data for 2020 and 2021 were affected by COVID-19, please refer to CESE factsheets 'Effects of COVID-19 on attendance during Semester 1 2020' and '2021 Semester 1 student attendance'.
- In 2021 attendance figures were calculated differently to align with the third edition of ACARA's National Standards for Student Attendance Data and Reporting. As a result, data is not directly comparable to previous years.
- The Department implemented an automated attendance feed (AAF) system in Semester 1 2021. The AAF has significantly improved data quality in 2021, which has affected data comparability with previous years.
- Refer to explanatory note 16.

Figure 7

Semester 1 attendance rates (%) in NSW government schools, Aboriginal, non-Aboriginal and all students, Years 1-10, 2021

**Notes:**

- From 2020, students in mainstream support classes are reported by their underlying grade of enrolment.
- Excludes Kindergarten, Years 11 and 12, and students in schools for specific purposes (SSPs).

Explanatory notes

Each year the education departments of all states and territories in Australia, and the Australian Government Department of Education and Training collect data on government and non-government schools, and their students. Since 1994 the date for collection has been the first Friday in August, as close as possible with the national Census of Population and Housing conducted every five years. The 2021 census of NSW Government schools was conducted on August 6. Initial results were published in CESE Bulletin, Inbrief Mid-year Census 2021.

This bulletin consolidates data from the department's Semester 1 and mid-year data collections. It also reports on non-government data collected by the Australian Government Department of Education and Training.

Government and non-government school data form part of the National Schools Statistics Collection which is reported annually by the Australian Bureau of Statistics in Schools Australia (Catalogue No. 4221.0).

1. Primary and secondary schools

Primary schools enrol students in Kindergarten to Year 6; secondary schools generally enrol students in Years 7 to 12, although some secondary schools only enrol students in the senior years, that is Years 11 to 12 or the junior years, that is, Years 7 to 10.

2. Central/Community schools

Central/community schools have primary and secondary departments and may be established where there is an enrolment in secondary classes of 20 or more. Enrolments in primary departments and secondary departments are included with the appropriate student data.

From 2016, the department has provided school education services on Norfolk Island under an agreement with the Australian government. Norfolk Island Central School was included in NSW data for the first time in 2016. It has not been designated an SA4 group, so is included in regional ('very remote') and NSW totals, but not included in individual SA4 group data unless specifically stated.

3. Schools for specific purposes

Schools for specific purposes (SSPs) or Special Schools support students with intellectual disability, mental health disorder or autism spectrum disorder, students with physical disability or sensory impairment, and students with learning difficulties or behaviour disorder. Students in SSPs are usually counted by type of class rather than by disability type as many students have comorbid disability. Multi-categorical classes include students with one or more than one disability with the focus being on placing students together who have similar needs. Some SSPs have no permanent enrolments because the children temporarily attending them are enrolled and counted in their own schools. These are mainly hospital schools.

4. Government preschools

From 2020, School of the Air preschool is reported separately from Dubbo School of Distance Education preschool.

5. Support classes in mainstream schools

The majority of support classes are established in mainstream primary, secondary and central schools. Specialist support classes cater for students with moderate to high learning and support needs including students with intellectual disability, mental health disorder, autism spectrum disorder, physical disability, sensory impairment and behaviour disorders. Many students have comorbid disability. Multi-categorical classes include students with one or more than one disability with the focus being on placing students together who have similar needs. Students enrolled in support classes are reported according to the type of class rather than by their year of schooling. Support class enrolments are included with other primary and secondary enrolments in some tables. From 2020, in some tables students in support classes in mainstream schools are reported by their underlying grade of enrolment. Please refer to 'Notes' section under each table.

6. Distance education

Distance education centres (DECs) provide schooling for students who are isolated or whose special circumstances prevent them from attending a regular school. They operate either as separate schools or as units within regular primary, central and high schools. Students enrolled in DECs are counted in their corresponding years of schooling.

In conjunction with the NSW School of Languages and Aurora College, DECs also provide individual subject enrolment, widening study opportunities for secondary students. These students are enrolled and counted at their home schools.

7. Part-time students

Students in Years 11 or 12 can enrol to study as a part-time student or a full-time student. For the annual census, a part-time student is enrolled in less than 10 units, regardless of where those units are studied. All Kindergarten to Year 10 students are considered to be full-time.

8. Full-time equivalent enrolments

Student enrolments are generally reported in full-time equivalent (FTE) units. The FTE for students studying less than 10 units, the minimum workload, is determined by the formula: $0.1 \times$ the number of units studied and represented as a proportion of the full-time enrolment of 1.0 FTE.

9. Aboriginal and Torres Strait Islander students

Students are counted as Aboriginal or Torres Strait Islanders if they are identified and accepted as such by the community with which they are associated, and they identify themselves on the school enrolment form.

Throughout this report the term 'Aboriginal' is used to describe the many nations, language groups and clans in NSW, including those from the Torres Strait.

10. Apparent Retention Rates (ARR)

Retention rates are 'apparent' as they do not track individual students through their final years of secondary schooling. What they measure is the ratio of the total number of students in a designated year (for example, Year 12 in 2021) divided by the total number of students in a previous year (for example, Year 7 in 2016). This would be the Year 7 to 12 apparent retention rate in 2021.

Care should be taken in the interpretation of apparent retention rates, which can exceed 100%, because the method of calculation does not take into account a range of factors such as migration, interstate movements of students, transfers to and from non-government schools, part-time schooling, students repeating a year of schooling, or students pursuing other education and training pathways.

11. Language Background other than English (LBOTE)

Students are counted as being of language background other than English if in their home a language other than English is spoken by the students, parents or guardians.

12. Class size

The audit of class sizes in NSW government primary schools is undertaken in March each year. The audit does not include schools for specific purposes, distance education centres or intensive English centres. The number of classes, average class sizes and enrolment numbers exclude support classes in primary and central schools.

13. Higher School Certificate (HSC)

The HSC is the highest educational award in secondary education in NSW. It is awarded to students who have satisfactorily completed Years 11 and 12 at secondary school. To be eligible, students must meet HSC course requirements and sit for the statewide HSC examinations.

14. Colleges

The secondary schools in some areas have been transformed into colleges in order to provide broader opportunities and better facilities for students. A college is the amalgamation of all the secondary schools within a specific area. Each former secondary school has become a campus of their college. A senior college campus is generally for students in Years 11 and 12 but in some cases, may include Year 10 students. The colleges have formed cooperative ventures with TAFE Institutes and universities. They offer a wide range of options from specialist senior HSC courses to school re-entry courses.

15. Family Occupation and Education Index

The Family Occupation and Education Index (FOEI) is a school level index of educational disadvantage related to socioeconomic background. It has been selected as the basis of the equity loading for socio-economic background in the department's Resource Allocation Model.

FOEI is constructed from parental education and occupation information collected from student enrolment forms and recorded in the Enrolment Registration Number system. FOEI uses a statistical regression model to produce a weighted combination of school-level parental education and occupation variables based on the extent to which each variable uniquely predicts average school performance. Further information on the methodology used to construct FOEI can be found in relevant publications released at education.nsw.gov.au/cese.

Students in FOEI quarter 1 group are the top 25% of students in NSW government schools who have the highest level of educational disadvantage related to socio-economic background.

16. Attendance

Government school systems in Australia measure attendance rates throughout Semester 1 (Terms 1 and 2). This is the time period specified for data collection in National Education Agreements between the Commonwealth and state and territory governments. The attendance rate is defined as the number of actual full time equivalent 'student days attended' over the collection period as a percentage of the total number of possible student days attended over the collection period (Measurement Framework for Schooling in Australia KPM 7(b)).

17. Statistical area 4 groupings

Previous publications of the Statistical Bulletin compared enrolments in DEC regions. From 2014 these geographies have been discontinued and replaced with a geographical structure based on the new ABS Australian Statistical Geography Standard (ASGS). Groups of ASGS Statistical Area 4 (SA4) boundaries in NSW have been combined into 11 groups for reporting and publication of department data. MCEECDYA refers to the Ministerial Council for Education, Early Childhood Development and Youth Affairs.

Name of SA4 groupings	SA4 Name
Sydney-North	Sydney - North Sydney and Hornsby Sydney - Northern Beaches Sydney - Ryde
Sydney-Inner	Sydney - City and Inner South Sydney - Eastern Suburbs Sydney - Inner West
Sydney-South	Sydney - Inner South West Sydney - Sutherland
Sydney-South West	Sydney - Outer South West Sydney - South West
Sydney-West	Sydney - Blacktown Sydney - Parramatta
Sydney-North West	Sydney - Baulkham Hills and Hawkesbury Sydney - Outer West and Blue Mountains
North East NSW	Coffs Harbour - Grafton Mid North Coast Richmond - Tweed
North West NSW	Hunter Valley excluding Newcastle Far West and Orana New England and North West
South West NSW	Central West Murray Riverina
South East NSW	Capital Region Illawarra Southern Highlands and Shoalhaven
Central Coast, Newcastle	Central Coast Newcastle and Lake Macquarie

Statistical Area 4 groups



Author: **CESE**

Centre for Education Statistics and Evaluation

GPO Box 33, Sydney NSW 2001, Australia

Visit our website to subscribe to the CESE newsletter

☎ 02 7814 1527

🌐 education.nsw.gov.au/cese

✉ info@cese.nsw.gov.au

📄 yammer.com/det.nsw.edu.au

This work is licensed under the [Creative Commons Attribution 4.0 International License](https://creativecommons.org/licenses/by/4.0/)

Please cite this publication as:

Centre for Education Statistics and Evaluation (2022), *Schools and students: 2021 statistical bulletin*, NSW Department of Education, education.nsw.gov.au/cese