



Education
Centre for Education
Statistics & Evaluation

CESE STATISTICAL BULLETIN ISSUE 5

Schools and Students: 2015 Statistical Bulletin

Centre for Education Statistics and Evaluation



2015 Statistical Bulletin Summary

NSW Government

Full-time equivalent (FTE) enrolments

Primary enrolments	465,767.0
Secondary enrolments	300,871.1
SSP enrolments	5,340.0
Total enrolments	771,978.1

Aboriginal and Torres Strait Islander students

Total Aboriginal & Torres Strait Islander enrolments	54,150.4
Per cent Aboriginal & Torres Strait Islander enrolments	7.0%

Part-time students

Number of part-time students	2,220
FTE enrolments	1,404.1

Preschool students

Number of preschool students	4,278
FTE enrolments	2,306.6

Students with language background other than English (LBOTE)

LBOTE enrolments	251,336
LBOTE enrolments as per cent of total enrolments	32.3%

NSW Non-Government

Full-time equivalent (FTE) enrolments

Primary enrolments	202,917.8
Secondary enrolments	206,709.4
Total enrolments	409,627.2

Data Sources

The 2015 Statistical Bulletin reports NSW government schools data from:

- The census of students undertaken on Friday, 7 August 2015.
- The census of students of language background other than English undertaken on Friday, 6 March 2015.
- The K-6 Class Size Audit undertaken on Friday, 13 March 2015.
- The K-6 languages programs: includes languages programs (in school hours) collection undertaken in May 2015.
- The Years 7-9 language participation collection undertaken in August 2015.
- The attendance collection undertaken in June 2015 for Semester 1.

The bulletin also includes non-government schools data which were collected by the Australian Government Department of Education and Training on Friday, 7 August 2015.

Further Reference

Additional information about schools and students in NSW is available from the Centre for Education Statistics and Evaluation's (CESE) other statistical publications:

- CESE Bulletin Issue 14 - Schools: Language Diversity in NSW, 2015.
- CESE Bulletin Issue 15 - Government School Student Attendance 2015 (Semester 1).
- CESE Bulletin Issue 16 - Inbrief Mid-year Census 2015

The publications can be obtained from CESE's website:

<http://www.cese.nsw.gov.au/publications>

Attendance rate (Semester 1)

Primary (Years 1 - 6)	93.9
Secondary (Years 7 - 10)	89.8
Years 1 - 10 (Including support)	92.4

Average primary class size

Kindergarten to Year 6	24.1
------------------------	------

HSC Year 12 student completions

HSC awards	45,000
------------	--------

NSW government schools

Primary schools	1,589
Separate infants schools	17
Central/community schools	66
Secondary schools	401
Schools for specific purposes (SSP)	113
Environmental education centres (EEC)	23
Total government schools	2,209

Preschools attached to primary/infants schools	99
Separate preschools	1
Total preschools	100

NSW non-government schools

Primary schools	494
Secondary schools	143
Primary/Secondary schools	239
Special schools	52
Total non-government schools	928

Table of Contents

List of Tables

Schools

Table 1 NSW government schools by classification, 2005-2015	5
Table 2 NSW government schools by type and SA4 groupings, mid-year 2015	7
Table 3 NSW government schools by FOEI bands and SA4 groupings, mid-year 2015	8
Table 4 NSW government schools by MCEECDYA remoteness and SA4 groupings, mid-year 2015	8
Table 5 List of college arrangements, mid-year 2015	9
Table 6 Secondary education schools by selective, specialist and coeducational status, mid-year 2015	9

Classes

Table 7 Average primary class sizes by year, 1997 and 2005-2015	10
---	----

Students

Table 8 Enrolments (FTE) in NSW government schools, 1970, 1980, 1990, 1995-2015	11
Table 9 Age-grade distribution of students in NSW government schools, mid-year 2015, primary students by age and year of schooling (excluding support students)	12
Table 10 Age-grade distribution of students in NSW government schools, mid-year 2015, secondary students by age and year of schooling (excluding support students)	12
Table 11 Age-grade distribution of students in NSW government schools, mid-year 2015 part-time secondary students by age and year of schooling	14
Table 12 Enrolments in support classes and schools for specific purposes (SSPs) by category, mid-year 2015	14
Table 13 Age-grade distribution of students in NSW government schools, mid-year 2015 students in schools for specific purposes by age and category	16
Table 14 Age distribution of students in NSW government preschools and early intervention programs, mid-year 2015	17
Table 15 Enrolments (FTE) in distance education by year of schooling, mid-year 2015	17
Table 16 Enrolments (FTE) of Aboriginal students by SA4 groupings and grade groups in NSW government schools, mid-year 2015	18
Table 17 Enrolment of students of language background other than English (LBOTE) in NSW government schools, March 2015 by SA4 groupings and grade groups	19
Table 18 Enrolments (FTE) in NSW government schools by FOEI quarters and SA4 groupings, April 2015	20

Study Patterns

Table 19 Primary students in NSW government schools studying a language other than English by year of schooling and language, May 2015	21
Table 20 Language participation Year 7-9 by gender and year of schooling, August 2015	22
Table 21 Course enrolments in Year 10 subjects in NSW government schools, 2015	23
Table 22 Course enrolments in Year 11 and Year 12 subjects in NSW government schools, 2015	26

Progress Measures

Table 23 Apparent retention in NSW government schools, 2005-2015	30
Table 24 NSW government school HSC completions, Year 12 students only, 2005-2015	31
Table 25 Schools attendance rates by Aboriginality and year level, 2015	3

List of Figures

Figure 1 NSW government schools, 2005-2015	6
Figure 2 Primary and secondary enrolments (FTE) in NSW government schools, 2005-2015	11
Figure 3 Enrolments (FTE) in NSW government schools by year of schooling and gender, mid-year 2015	13
Figure 4 Enrolments (FTE) in NSW government schools by age and gender, mid-year 2015	13
Figure 5 Enrolments in support classes in ordinary schools and SSPs by category, mid-year 2015	15
Figure 6 Apparent retention (%) in NSW government schools, 2005-2015	30
Figure 7 Full year attendance rates (%) in NSW government schools, Aboriginal, non-Aboriginal and all students, Years 1-10, 2015	32

Table 1

NSW government schools by classification, 2005-2015

Classification	2005	2006	2007	2008	2009	2010	2011	2012	2013	2014	2015
Primary and infants schools											
Class 1	71	59	59	58	58	56	62	67	74	85	96
Class 2	266	261	261	262	262	262	267	266	262	265	262
Class 3	358	342	342	343	343	324	308	313	307	296	298
Class 4	348	377	375	381	383	391	393	377	378	378	372
Class 5	455	443	433	424	423	425	419	425	412	406	391
Class 6	137	145	155	156	147	154	164	157	167	170	170
Separate Infants	17	17	17	17	17	17	17	17	17	17	17
Total	1,652	1,644	1,642	1,641	1,633	1,629	1,630	1,622	1,617	1,617	1,606
Central and community schools											
Class 1	3	3	4	4	4	4	4	4	4	4	4
Class 2	9	10	9	9	9	7	6	7	6	5	5
Class 3	23	23	24	22	22	21	20	19	21	22	22
Class 4	25	25	24	26	26	29	31	31	30	30	29
Class 8	3	4	4	4	4	4	4	4	4	4	4
Class 9	3	2	2	2	2	2	2	2	2	2	2
Total	66	67	67	67	67	67	67	67	67	67	66
Secondary schools											
Class 8	142	141	134	132	132	139	138	140	140	137	137
Class 9	255	256	263	265	266	259	260	258	258	261	264
Total	397	397	397	397	398	398	398	398	398	398	401
Other schools											
Schools for Specific Purposes	108	108	114	114	113	113	113	113	113	114	113
Environmental Education Centres	23	23	23	23	23	23	23	23	23	23	23
Total Schools	2,246	2,239	2,243	2,242	2,234	2,230	2,231	2,223	2,218	2,219	2,209

Classifications:

Primary and infants schools:
 Class 1 - More than 700 enrolments
 Class 2 - 451 to 700 enrolments
 Class 3 - 301 to 450 enrolments
 Class 4 - 160 to 300 enrolments
 Class 5 - 26 to 159 enrolments
 Class 6 - Less than 26 enrolments

Central schools:
 Class 1 - More than 450 enrolments
 Class 2 - 301 to 450 enrolments
 Class 3 - 160 to 300 enrolments
 Class 4 - 26 to 159 enrolments

Community schools:
 Class 8 - More than 900 enrolments
 Class 9 - 900 or less enrolments

Secondary schools:
 Class 8 - More than 900 enrolments
 Class 9 - 900 or less enrolments

Notes:

- The classifications used in the table are not based on the 2015 actual enrolments collected through the mid-year census. The classifications are based on the staffing entitlement classifications reviewed periodically by the Classification Review Committee.
- See explanatory notes 1, 2 and 3.

Figure 1

NSW government schools, 2005-2015

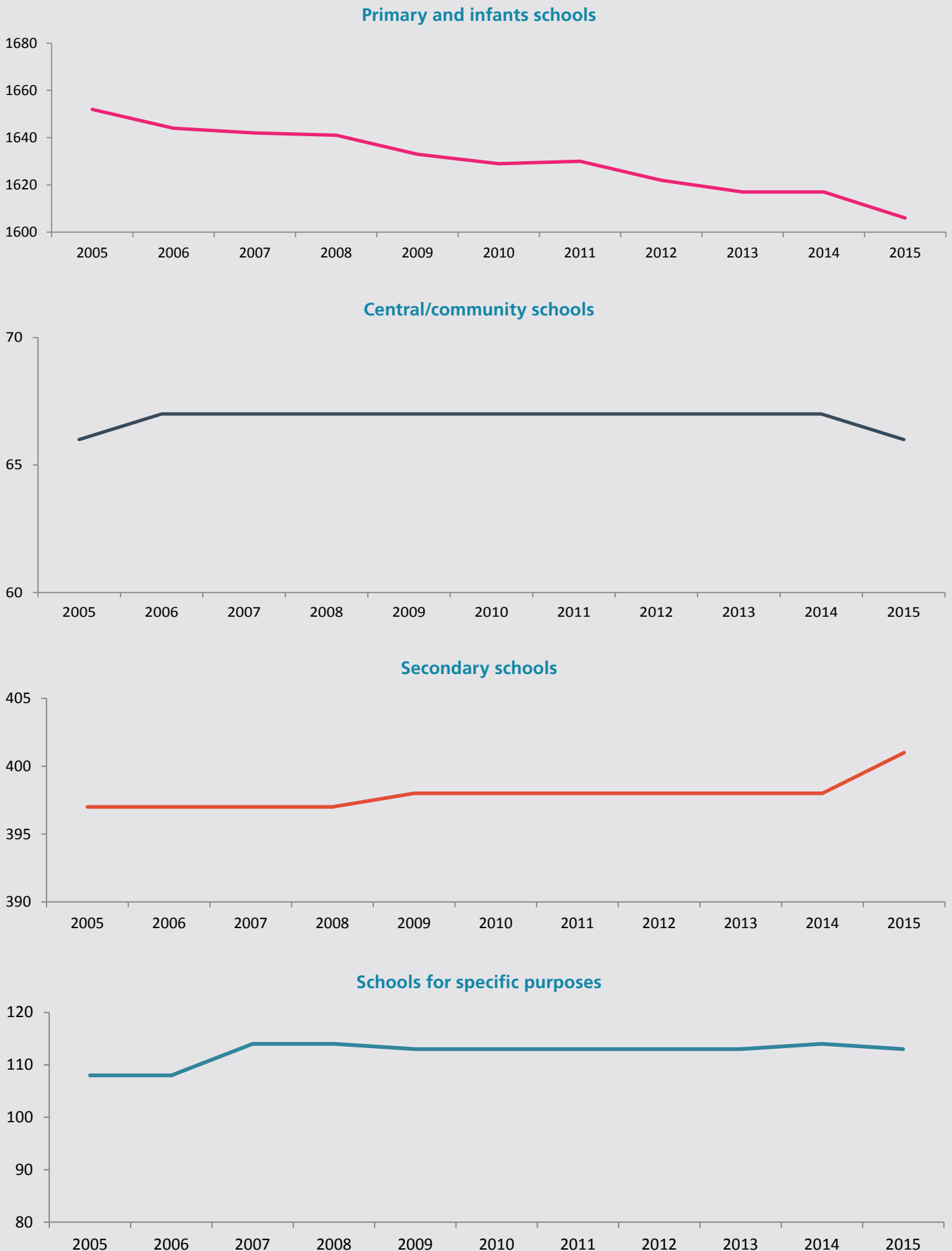


Table 2**NSW government schools by type and SA4 groupings, mid-year 2015**

SA4 Groupings	Primary	Central/ Community	Secondary	SSPs	EECs	Total
Sydney-North	98	0	34	13	2	147
Sydney-Inner	90	1	28	10	1	130
Sydney-South	117	1	38	15	2	173
Sydney-South West	113	0	38	12	3	166
Sydney-West	113	0	36	16	0	165
Sydney-North West	108	0	28	4	3	143
Sydney Total	639	2	202	70	11	924
North East NSW	216	8	39	4	2	269
North West NSW	216	28	44	7	3	298
South West NSW	207	23	41	11	2	284
South East NSW	186	3	39	8	2	238
Central Coast, Newcastle	142	2	36	13	3	196
Regional Total	967	64	199	43	12	1,285
NSW	1,606	66	401	113	23	2,209

Notes:

- Alexandria Park Community School, Batlow Technology School, Dubbo School of Distance Education, Evans River Community School, Hunter School of Performing Arts, Lucas Heights Community School, Southern Cross School, and Wadalba Community School are included with central/community schools.
- See explanatory notes 1, 2, 3 and 16.

Table 3

NSW government schools by FOEI bands and SA4 groupings, mid-year 2015

SA4 Groupings	Less than 50	50 to 90	90 to 110	110 to 150	150 or more	N/A	Total	≥ 110 (%)
Sydney-North	124	15	1	1	2	4	147	2.0%
Sydney-Inner	82	30	6	9	1	2	130	7.7%
Sydney-South	42	63	26	29	11	2	173	23.1%
Sydney-South West	1	24	23	66	49	3	166	69.3%
Sydney-West	27	27	28	40	43		165	50.3%
Sydney-North West	29	45	20	37	9	3	143	32.2%
Sydney Total	305	204	104	182	115	14	924	32.1%
North East NSW	9	51	55	110	42	2	269	56.5%
North West NSW	3	41	40	125	85	4	298	70.5%
South West NSW	25	57	59	75	20	2	238	39.9%
South East NSW	5	44	64	124	45	2	284	59.5%
Central Coast, Newcastle	21	47	31	78	16	3	196	48.0%
Regional Total	63	240	249	512	208	13	1,285	56.0%
NSW	368	444	353	694	323	27	2,209	46.0%

Notes

The list of schools with FOEI values and quarters:

- Includes:-
 - » All hospital schools (all assigned a notional FOEI of 100)
 - » Stewart House School (assigned a notional FOEI of 150)
 - » Royal Far West School (assigned a notional FOEI of 150)
- Excludes:-
 - » Palm Avenue School
 - » Open High School
 - » All Environmental Education Centres

See explanatory notes 15 and 16

Table 4

NSW government schools by MCEECDYA remoteness and SA4 groupings, mid-year 2015

SA4 Groupings	Metropolitan	Provincial	Remote	Very Remote	Total
Sydney-North	146	1			147
Sydney-Inner	130				130
Sydney-South	173				173
Sydney-South West	166				166
Sydney-West	165				165
Sydney-North West	143				143
Sydney Total	923	1			924
North East NSW	13	255		1	269
North West NSW	63	191	32	12	298
South West NSW		275	9		284
South East NSW	99	139			238
Central Coast, Newcastle	196				196
Regional Total	371	860	41	13	1,285
NSW	1,294	861	41	13	2,209

Notes:

- See explanatory note 16.

Table 5**List of college arrangements, mid-year 2015**

College	Senior Campus	Other Campuses			
Brisbane Water Secondary College	Woy Woy Campus	Umina Campus			
Callaghan College	Jesmond Campus	Wallsend Campus	Waratah Campus		
Chifley College	Senior Campus	Bidwill Campus	Dunheved Campus	Mount Druitt Campus	Shalvey Campus
Denison College of Secondary Education		Bathurst High	Kelso High		
Dubbo College	Senior Campus	Delroy Campus	South Campus		
Georges River College	Oatley Senior Campus	Hurstville Boys Campus	Penshurst Girls Campus	Peakhurst Campus	
Great Lakes College	Senior Campus	Forster Campus	Tuncurry Campus		
Hastings Secondary College		Port Macquarie Campus	Westport Campus		
Moree Secondary College	Albert St Campus	Carol Ave Campus			
Nirimba College	Wyndham College	Quakers Hill High School	Riverstone High School	Seven Hills High School	
Northern Beaches College	Freshwater Senior Campus	Balgowlah Boys Campus	Cromer Campus	Mackellar Girls Campus	Manly Campus
Sydney Secondary College	Blackwattle Bay Campus	Balmain Campus	Leichhardt Campus		
The Rivers Secondary College		Kadina High Campus	Lismore High Campus	Richmond River High Campus	
Tuggerah Lakes College	The Entrance Campus	Berkeley Vale Campus	Tumbi Umbi Campus		

Notes:

- Denison College of Secondary Education, Hastings Secondary College and The Rivers Secondary College do not have senior campuses.
- See explanatory note 14.

Table 6**Secondary education schools by selective, specialist and coeducational status, mid-year 2015**

Selective Status	Specialty Name	Coeducational	Boys	Girls	Total
Fully Selective	Agricultural	3	1		4
	Comprehensive	10	4	4	18
Partially Selective	Comprehensive	17	1	2	20
	Junior College	2			2
	Language	2			2
	Senior College	1			1
Total Selective		35	6	6	47
Non-Selective	Comprehensive	326	12	15	353
	Creative Arts	1			1
	Intensive English	1			1
	Junior College	16	1	1	18
	Language	2		1	3
	Marine Technology	1			1
	Performing Arts	8			8
	Rural Technology	1			1
	Senior College	15			15
	Sports	7			7
	Technology	8	2	1	11
	Visual Arts	1			1
	Total Non-Selective		387	15	18
Total Secondary Schools		422	21	24	467

Notes:

- Includes secondary schools and central/community schools. The Conservatorium High School is included with performing arts schools.
- Aurora College (NSW Virtual Selective High School) is included with fully selective schools.
- See explanatory note 1.

Table 7**Average primary class sizes by year, 1997 and 2005-2015**

Year	1997	2005	2006	2007	2008	2009	2010	2011	2012	2013	2014	2015
Kindergarten	24.1	19.7	19.3	19.2	19.2	19.3	19.2	19.2	19.3	19.4	19.3	19.2
Year 1	25.5	23.6	21.3	21.1	21.2	21.3	21.2	21.2	21.2	21.3	21.4	21.3
Year 2	26.2	25.1	24.1	22.6	22.5	22.6	22.7	22.6	22.7	22.7	22.7	22.7
Year 3	26.6	26.1	25.9	25.7	25.7	25.8	25.6	25.7	25.5	25.6	25.6	25.9
Year 4	26.8	26.4	26.4	26.2	26.1	26.2	26.2	26.1	25.9	25.9	25.9	26.2
Year 5	26.8	26.6	26.6	26.5	26.5	26.5	26.4	26.4	26.2	26.3	26.2	26.5
Year 6	26.8	26.7	26.6	26.5	26.5	26.5	26.4	26.3	26.2	26.1	26.2	26.4
Kindergarten - Year 6	26.9	25.3	24.6	24.3	24.2	24.3	24.2	24.0	24.0	24.0	24.0	24.1

Notes:

- Class size audits were not conducted in 1998, 1999, 2000 and 2001.
- The average class size for each year level is calculated from regular and multi-age classes that contain a student from that year level.
- Students attending schools for specific purposes (SSPs), students in support classes in regular schools and distance education students are excluded from average class size calculations.
- See explanatory note 12.

Table 8

Enrolments (FTE) in NSW government schools, 1970, 1980, 1990, 1995-2015

Year	Primary	Secondary	SSP	Total
1970	503,547	257,874		761,421
1980	515,769	283,352		799,121
1990	434,814	304,006	4,366	743,186
1995	446,722	305,395.6	3,789	755,906.6
1996	450,465	306,823.3	3,749	761,037.3
1997	451,560	308,922.7	3,690	764,172.7
1998	452,565	309,136.7	3,673	765,374.7
1999	453,454	308,116.1	3,762	765,332.1
2000	454,363	303,681.1	3,792	761,836.1
2001	451,096	301,771.4	3,873	756,740.4
2002	447,897	302,988.0	3,915	754,800.0
2003	443,213	304,034.0	3,938	751,185.0
2004	438,677	302,849.6	3,981	745,507.6
2005	434,876	302,578.3	4,124	741,578.3
2006	432,660	303,622.0	4,133	740,415.0
2007	429,900	304,457.7	4,278	738,635.7
2008	428,331	303,055.7	4,392	735,778.7
2009	429,000	303,180.7	4,466	736,646.7
2010	430,177	307,291.2	4,673	742,141.2
2011	433,873	306,893.2	4,774	745,540.2
2012	438,681	304,632.1	4,921	748,234.1
2013	446,848	303,433.6	5,064	755,345.6
2014	456,151	302,339.7	5,207	763,697.7
2015	465,767	300,871.1	5,340	771,978.1

Notes:

- Since 1993 some students have enrolled part-time. All enrolments are reported in full-time equivalent units (FTEs) and include full-time and part-time students.
- See explanatory notes 1, 3, 6 and 7.

Figure 2

Primary and secondary enrolments (FTE) in NSW government schools, 2005-2015

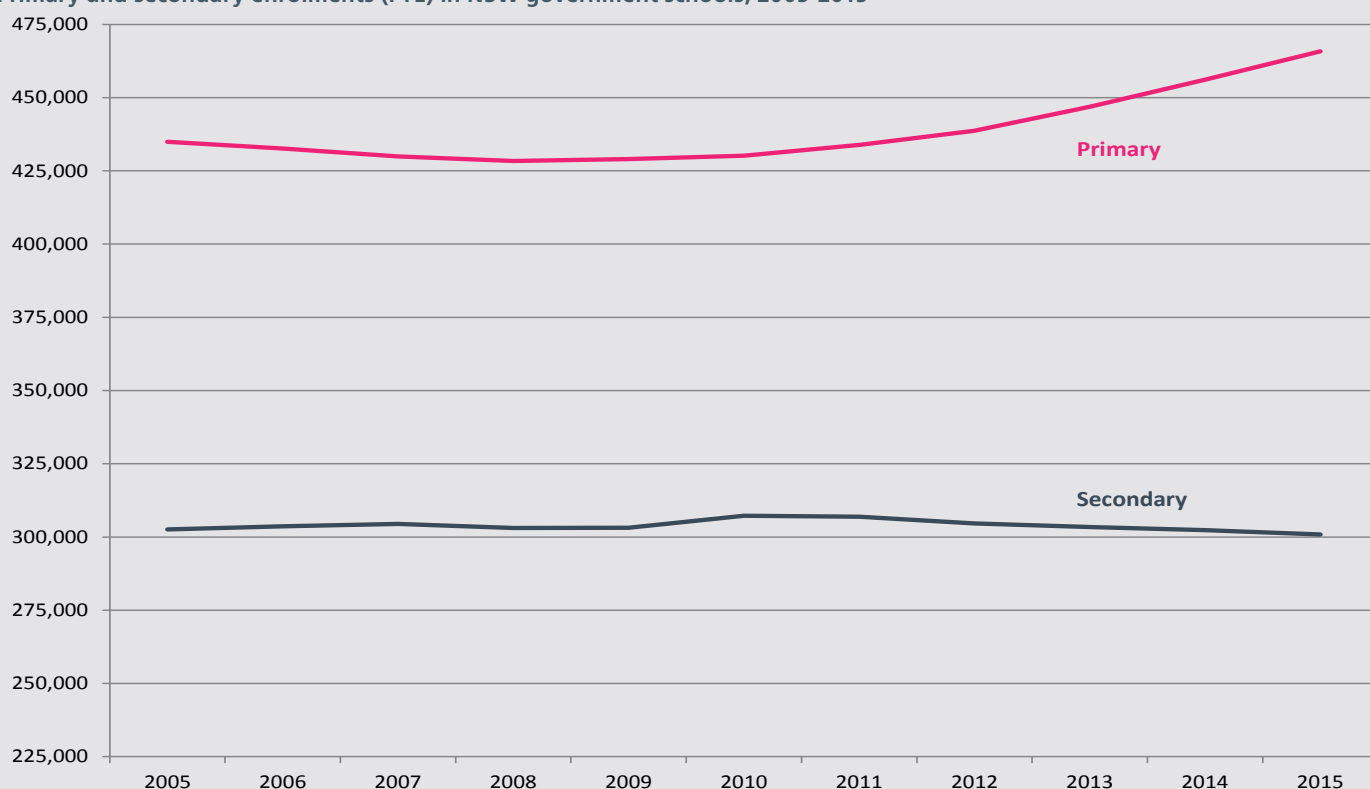


Table 9
Age-grade distribution of students in NSW government schools, mid-year 2015, primary students by age and year of schooling (excluding support students)

Age Yrs:Mths	Kindergarten		Year 1		Year 2		Year 3		Year 4		Year 5		Year 6		Total		Primary Total	
	Boys	Girls	Boys	Girls	Boys	Girls	Boys	Girls	Boys	Girls	Boys	Girls	Boys	Girls	Boys	Girls	Boys	Girls
Under 5	561	845													561	845	1,406	
5-5:11	26,424	27,115	516	742											26,941	27,858	54,799	
6-6:11	8,644	5,969	26,210	26,942	480*	750*									35,333	33,660	68,993	
7-7:11	15	12	8,237	5,882	26,242	26,955	502	772							34,996	33,621	68,617	
8-8:11			28*	13	8,845	6,042	25,262	26,254	427	662					34,561	32,972	67,533	
9-9:11					35*	16*	8,317	5,879	24,268	24,926	457	642*			33,076	31,462	64,538	
10-10:11							37	19*	8,136	5,695	22,813	23,620	451	559*	31,439	29,892	61,331	
11-11:11									38*	19	7,616	5,448	21,957	22,973	29,610	28,441	58,051	
12-12:11											49*	25	7,976	5,623	8,023	5,648	13,671	
13 and over													68	39	71	39	110	
Subtotal	35,644	33,941	34,991	33,579	35,602	33,763	34,118	32,924	32,869	31,302	30,935	29,735	30,452	29,194	234,611	224,438	459,049	
Total	69,585	68,570	69,365	67,042	64,171	60,670	59,646	459,049										

Notes:

- Students in distance education and Opportunity Classes (OC) are included with their appropriate grade levels. Students in support classes either in mainstream schools or schools for specific purposes (SSPs) are not included.
- Figures with an asterisk (*) may contain up to 5 students from adjacent rows in the same column. For example, the total number of year 2 boys aged 6-6:11 contains up to 5 students aged 5-5:11.

Table 10
Age-grade distribution of students in NSW government schools, mid-year 2015, secondary students by age and year of schooling (excluding support students)

Age Yrs:Mths	Year 7		Year 8		Year 9		Year 10		Year 11		Year 12		Total		Secondary Total	
	Boys	Girls	Boys	Girls	Boys	Girls	Boys	Girls	Boys	Girls	Boys	Girls	Boys	Girls	Boys	Girls
Under 12	327	495												329	495	824
12-12:11	18,164	19,120	381*	492										18,543	19,613	38,156
13-13:11	6,719	4,731	17,844	19,054	407	528*								24,972	24,314	49,286
14-14:11	67*	50	6,934	4,792	18,323	19,344	412*	579*						25,734	24,766	50,500
15-15:11			115*	45*	7,075	5,174	18,361	19,471	432*	594*				25,983	25,281	51,264
16-16:11					124*	71*	7,434	5,679	16,367	18,135	353*	526*		24,271	24,410	48,681
17-17:11							278	216	6,372	4,960	13,542	15,916	20,198	20,198	21,093	41,291
18-18:11							37	37	434	384	4,961	4,176	5,433	4,597	10,030	
19-19:11							23	23	99	74	270	256	392	353	745	
20-20:11							20	22	30	35	69	61	119	118	237	
21 and over							45	53	78	60	26	61	149	174	323	
Subtotal	25,277	24,396	25,274	24,383	25,929	25,117	26,610	26,080	23,812	24,242	19,221	20,996	146,123	145,214	291,337	
Total	49,673	49,657	51,046	52,690	48,054	40,217	291,337									

Notes:

- Students in distance education are included with their appropriate grade levels. Students in support classes either in mainstream schools or schools for specific purposes (SSPs) are not included.
- Figures with an asterisk (*) may contain up to 5 students from adjacent rows in the same column. For example, the total number of year 8 boys aged 12-12:11 contains up to 5 students aged under 12.

Figure 3

Enrolments (FTE) in NSW government schools by year of schooling and gender, mid-year 2015

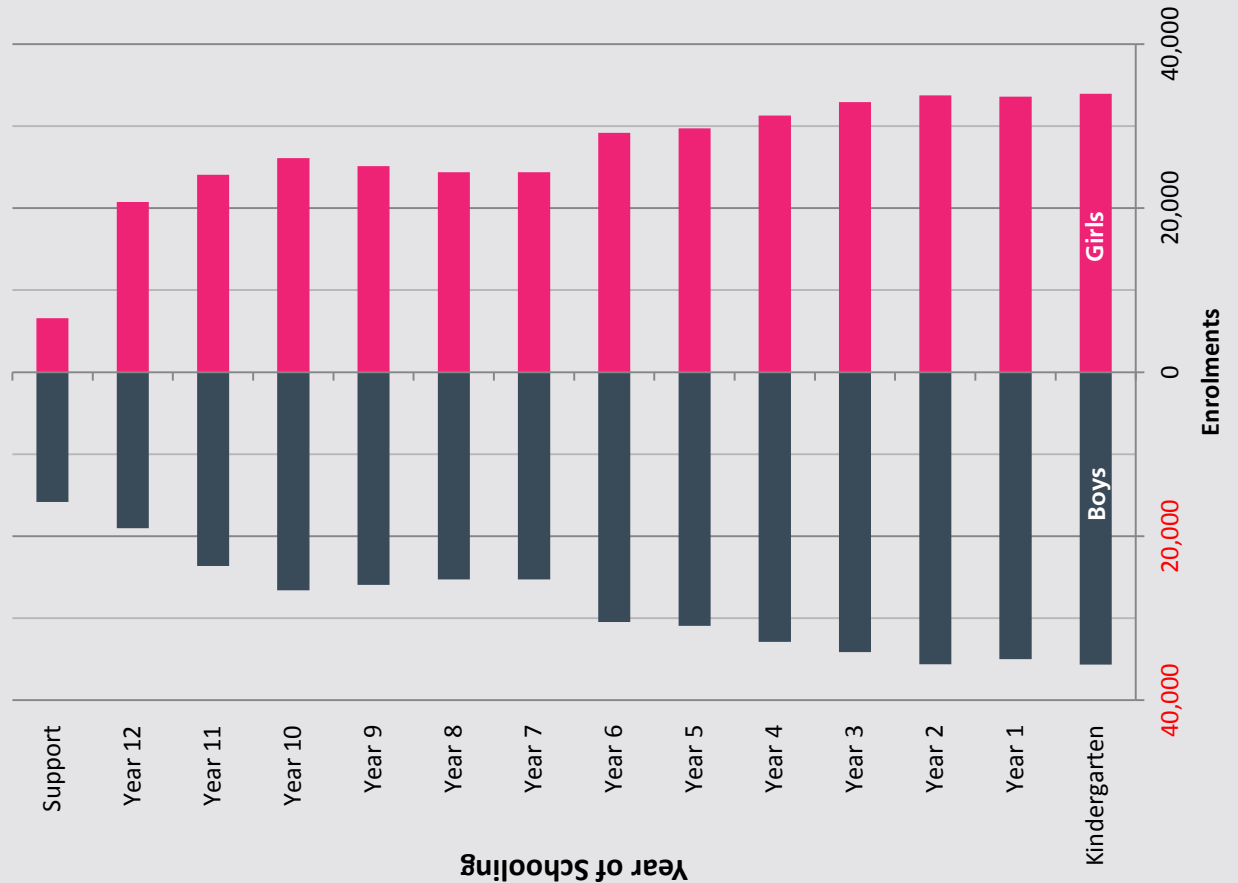


Figure 4

Enrolments (FTE) in NSW government schools by age and gender, mid-year 2015

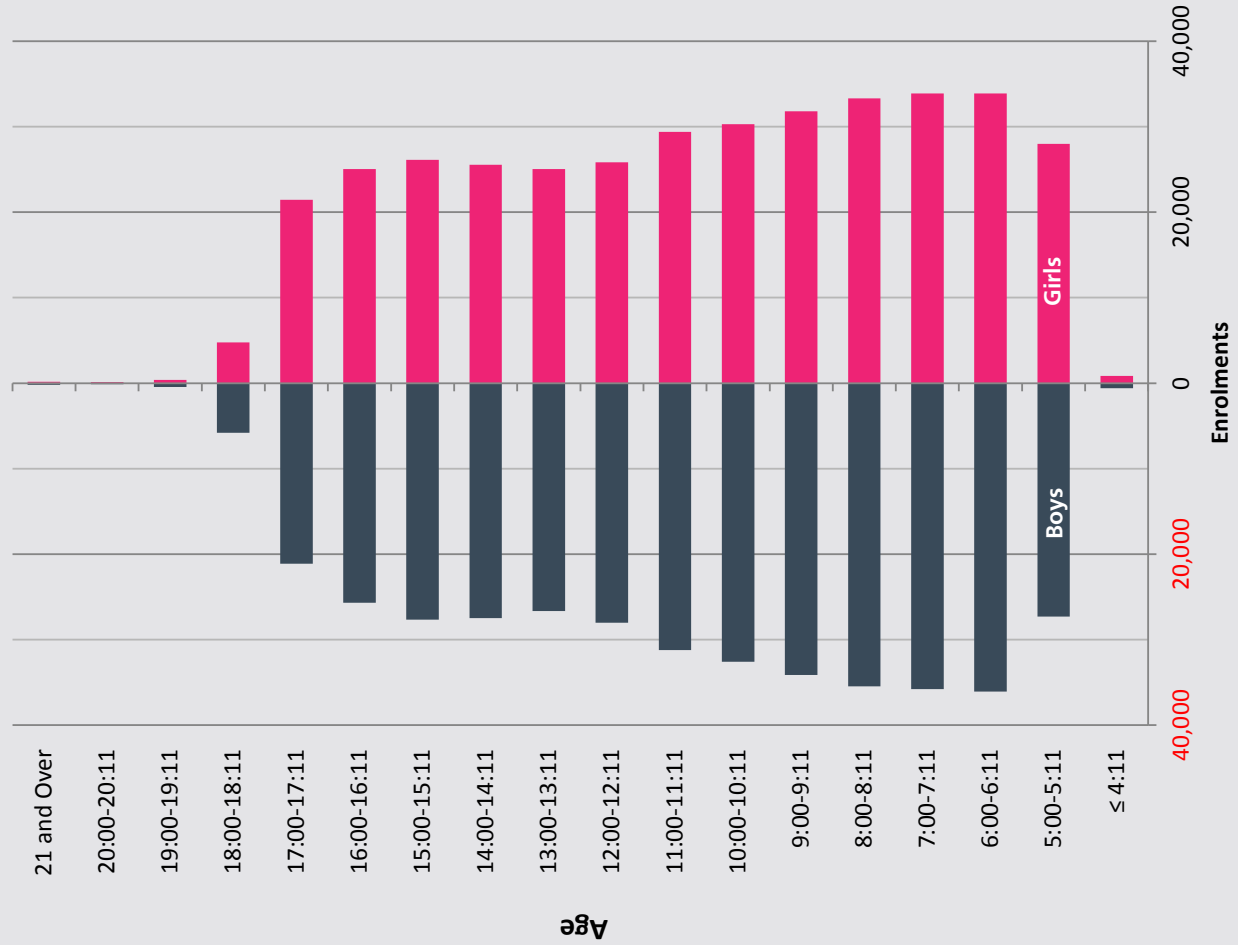


Table 11

Age-grade distribution of students in NSW government schools, mid-year 2015
part-time secondary students by age and year of schooling

Age Yrs:Mths	Year 11		Year 12		Total		Total Part-time
	Boys	Girls	Boys	Girls	Boys	Girls	
Under 16	6	14			6	14	20
16-16:11	199	231	10	18	209	249	458
17-17:11	110	124	357	456	467	580	1,047
18-18:11	29	32	226	224	255	256	511
19-19:11	10	7	38	35	48	42	90
20-20:11	2	4	11	9	13	13	26
21 and Over	27	26	4	11	31	37	68
Subtotal	383	438	646	753	1,029	1,191	2,220
Total	821		1,399		2,220		

Full-time equivalent

Subtotal	219.3	242.5	436.1	506.2	655.4	748.7	1,404.1
Total	461.8		942.3		1,404.1		

Notes:

- See explanatory notes 6 and 7.

Table 12

Enrolments in support classes and schools for specific purposes (SSPs) by category, mid-year 2015

Category	Primary Schools	Secondary Schools	Schools for Specific Purposes	Total
AU	701	659	37	1,397
BD	22	64	471	557
DB			3	3
ED	302	557	899	1,758
H	116	140	6	262
IE		2,191		2,191
IM	1,719	3,341	14	5,074
IO	878	998		1,876
IO/AU	366	59	35	460
IO/IS	681	754	2,895	4,330
IS	31		109	140
JJ			282	282
MC	1,830	1,394	528	3,752
P	62	90	13	165
TUT	10	103	19	132
V			29	29
Total	6,718	10,350	5,340	22,408

Key:

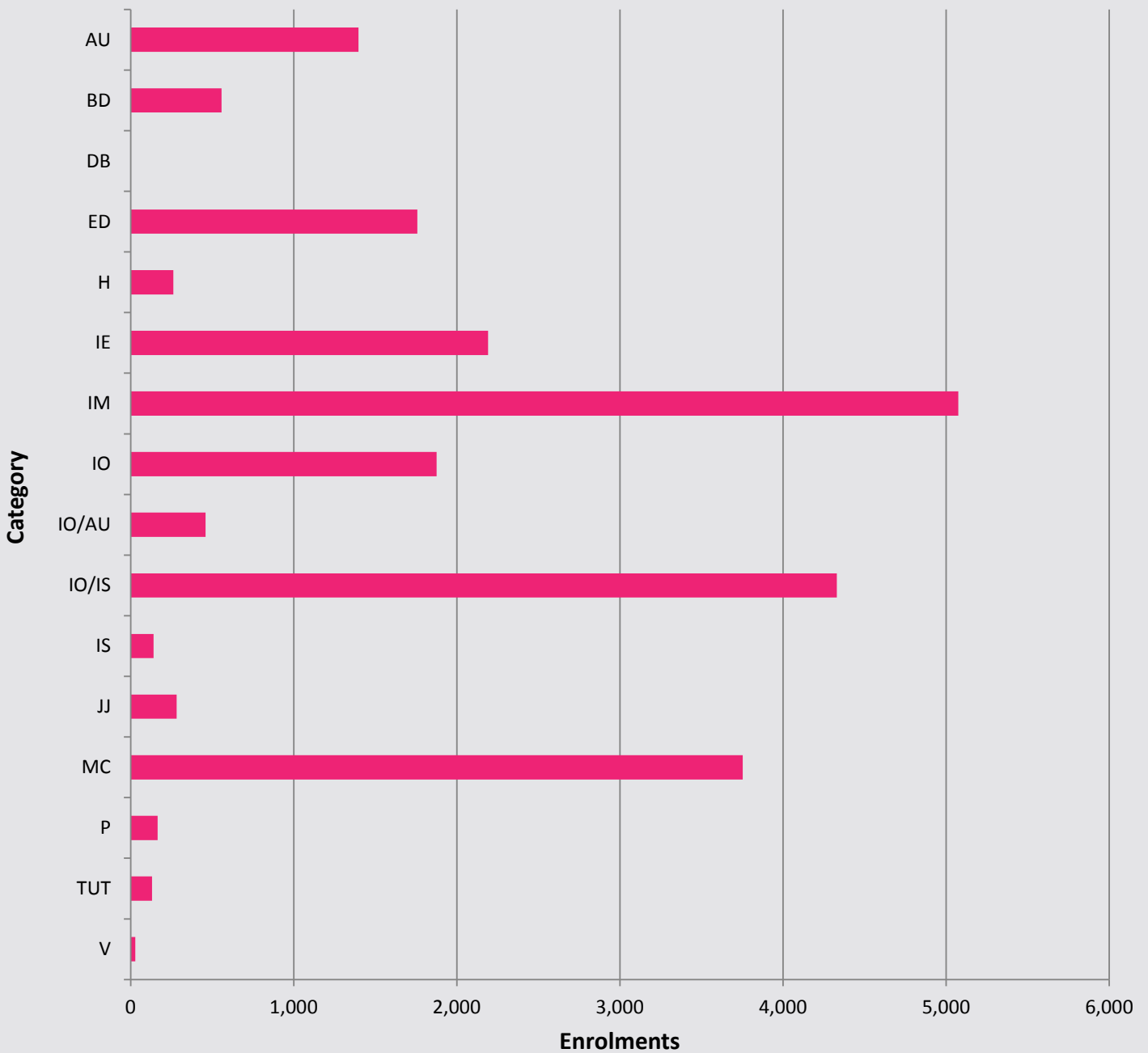
AU	Autism	IM	Mild intellectual disability	MC	Multicategorical
BD	Behaviour disorder	IO	Moderate intellectual disability	P	Physical disability
DB	Visual and hearing disability	IO/AU	Both autism and moderate intellectual disability	TUT	Tutorial
ED	Emotional disturbance	IO/IS	Moderate or severe intellectual disability	V	Visual disability
H	Hearing disability	IS	Severe intellectual disability		
IE	Intensive English	JJ	Juvenile Justice		

Notes:

- Students in SSPs, except those in juvenile justice schools, are reported by the type of support class they are enrolled in, not by the type of SSP.
- See explanatory notes 3 and 4.

Figure 5

Enrolments in support classes in ordinary schools and SSPs by category, mid-year 2015



Key:

AU	Autism	IM	Mild intellectual disability	MC	Multicategorical
BD	Behaviour disorder	IO	Moderate intellectual disability	P	Physical disability
DB	Visual and hearing disability	IO/AU	Both autism and moderate intellectual disability	TUT	Tutorial
ED	Emotional disturbance	IO/IS	Moderate or severe intellectual disability	V	Visual disability
H	Hearing disability	IS	Severe intellectual disability		
IE	Intensive English	JJ	Juvenile Justice		

Table 13

Age-grade distribution of students in NSW government schools, mid-year 2015
students in schools for specific purposes by age and category

Age Yrs:Mths	BD	ED	IO/IS	IS	JJ	MC	Total		All
							Boys	Girls	
4-4:11			22	2		9	23	15	38
5-5:11		3	121	6		42	123	59	182
6-6:11		12	181	3		52	193	72	265
7-7:11	3	19	167	7		57	186	77	263
8-8:11	3	26	200	9		52	209	90	299
9-9:11	4	48	165	9		31	205	58	263
10-10:11	22	62	205	5		31	254	86	340
11-11:11	37	60	238	7		33	318	80	398
12-12:11	46	53	246	4	1	37	293	104	397
13-13:11	81	85	263	8	7	42	373	125	498
14-14:11	120	128	273	10	26	36	440	159	599
15-15:11	105	115	243	7	43	37	395	166	561
16-16:11	43	144	224	15	49	33	370	147	517
17-17:11	7	109	236	13	85	25	338	145	483
18-18:11		29	110	4	43	10	139	61	200
19 and over		6	1		28	1	35	2	37
Subtotal							3,894	1,446	5,340
Total	471	899	2,895	109	282	528	5,340		

Key:

BD	Behaviour disorder
ED	Emotional disturbance
IO/IS	Moderate or severe intellectual disability
IS	Severe intellectual disability
JJ	Juvenile Justice
MC	Multi-categorical

Notes:

- Students in SSPs, except those in juvenile justice schools, are reported by the type of support class they are enrolled in, not by the type of SSP.
- The total figures includes additional support class types (autism, hearing disability, mild intellectual disability, moderate intellectual disability, physical disability, tutorial class, visual disability, both autism and moderate intellectual disability, both visual and hearing disability). These figures have not been provided separately in the table due to suppression rules.
- See explanatory note 3.

Table 14

Age distribution of students in NSW government preschools and early intervention programs, mid-year 2015

Preschools

Age Yrs:Mths	All Students	Aboriginal and Torres Strait Islander Students
3 and Under	151	27
4:00 - 4:11	3,418	412
5:00 - 5:11	709	126
6 and Over		
Total	4,278	565

Early Intervention

Age Yrs:Mths	All Students	Aboriginal and Torres Strait Islander Students
3 and Under	52	
4:00 - 4:11	341	52
5:00 - 5:11	317	38
6 and Over		
Total	710	98

Notes:

- Figures reported above are children enrolled in a preschool or an Early Intervention program that is run by a NSW government school. These government preschool classes provide full-time or part-time schooling at pre-primary level.
- In NSW, most children receiving a preschool education are enrolled at a government funded community preschool or in a Long Day Care centre which offers a preschool program.

Table 15

Enrolments (FTE) in distance education by year of schooling, mid-year 2015

Primary	Boys	Girls	Total
Kindergarten	41	45	86
Year 1	55	43	98
Year 2	56	59	115
Year 3	65	59	124
Year 4	61	63	124
Year 5	59	63	122
Year 6	66	62	128
Primary Support	5	8	13
Total Primary	408	402	810
Secondary	Boys	Girls	Total
Year 7	45	40	85
Year 8	107	77	184
Year 9	181	180	361
Year 10	307	375	682
Year 11	189.9	229.3	419.2
Year 12	71	111.3	182.3
Secondary Support	20	13	33
Total Secondary	920.9	1,025.6	1,946.5
Total All Students	1,328.9	1,427.6	2,756.5

Notes:

- All enrolments are reported in full-time equivalent units (FTE), and include full-time and part-time students whose main school is the distance education centre.
- See explanatory note 5.

Table 16

Enrolments (FTE) of Aboriginal students by SA4 groupings and grade groups in NSW government schools, mid-year 2015

SA4 Groupings	K-2	Yr3-6	Primary Total	Yr7-10	Yr11-12	Secondary Total	SA4 Groups Total	% Aboriginal
Sydney-North	102	123	225	118	37.8	155.8	396.8	0.5%
Sydney-Inner	366	434	800	361	125.3	486.3	1,322.3	2.4%
Sydney-South	288	358	646	319	105.4	424.4	1,100.4	1.4%
Sydney-South West	933	1,275	2,208	1,018	261.6	1,279.6	3,576.6	4.2%
Sydney-West	877	1,087	1,964	805	243.4	1,048.4	3,131.4	3.9%
Sydney-North West	811	982	1,793	888	233.8	1,121.8	2,961.8	4.8%
Sydney Total	3,377	4,259	7,636	3,509	1,007.3	4,516.3	12,489.3	2.8%
North East NSW	2,222	2,841	5,063	2,598	740.3	3,338.3	8,453.3	13.4%
North West NSW	3,852	4,679	8,531	4,178	1,087.4	5,265.4	13,895.4	20.9%
South West NSW	1,881	2,269	4,150	2,133	500.7	2,633.7	6,883.7	12.8%
South East NSW	1,571	2,065	3,636	1,806	503.9	2,309.9	5,990.9	8.4%
Central Coast, Newcastle	1,649	2,117	3,766	1,998	557.8	2,555.8	6,437.8	8.2%
Regional Total	11,175	13,971	25,146	12,713	3,390.1	16,103.1	41,661.1	12.5%
State Total	14,552	18,230	32,782	16,222	4,397.4	20,619.4	54,150.4	7.0%
Aboriginal total as a percentage of total enrolments in each grade group	7.0%	7.1%	7.0%	7.6%	5.0%	6.9%	7.0%	

Notes:

- Students in Distance Education and Opportunity Classes (OC) are included with their appropriate grade levels.
- Primary support students are included in Year 3 to 6. Secondary support students are included in Year 7 to 10.
- There were 749 Aboriginal students enrolled in SSPs, representing 14.0% of total SSP enrolments. This figure is not broken down into SA4 groupings but is included in SA4 Groups Total.
- Previous publications of the Statistical Bulletin compared enrolments in DoE regions. From 2014 these geographies have been discontinued and replaced with a geographical structure based on the new ABS Australian Statistical Geography Standard (ASGS). Groups of ASGS Statistical Area 4 (SA4) boundaries in New South Wales have been combined into 11 groups for reporting and publication of Department data.
- See explanatory notes 8 and 16.

Table 17**Enrolment of students of language background other than English (LBOTE) in NSW government schools,
March 2015 by SA4 groupings and grade groups**

SA4 Groupings	K-2	Yr3-6	Primary Total	Yr7-10	Yr11-12	Secondary Total	SA4 Groups Total	% LBOTE
Sydney-North	9,401	10,028	19,429	8,727	4,684	13,411	32,973	39.8 %
Sydney-Inner	7,283	8,256	15,539	8,880	4,787	13,667	29,325	53.6 %
Sydney-South	12,061	15,028	27,089	12,298	5,796	18,094	45,553	59.4 %
Sydney-South West	11,783	16,119	27,902	14,767	6,817	21,584	49,720	59.0 %
Sydney-West	15,512	17,661	33,173	12,004	5,819	17,823	51,390	64.1 %
Sydney-North West	4,152	5,192	9,344	5,046	2,913	7,959	17,369	27.9 %
Sydney Total	60,192	72,284	132,476	61,722	30,816	92,538	226,330	51.3 %
North East NSW	954	1,171	2,125	995	473	1,468	3,596	5.6 %
North West NSW	780	956	1,736	724	298	1,022	2,766	4.1 %
South West NSW	940	1,163	2,103	859	427	1,286	3,407	6.3 %
South East NSW	2,204	2,768	4,972	2,300	1,096	3,396	8,406	11.7 %
Central Coast, Newcastle	1,752	2,160	3,912	1,992	865	2,857	6,831	8.6 %
Regional Total	6,630	8,218	14,848	6,870	3,159	10,029	25,006	7.4 %
State Total	66,822	80,502	147,324	68,592	33,975	102,567	251,336	32.3 %

Notes:

- LBOTE enrolments for 2015 are compared to enrolments (headcount) in March 2015.
- There were 1,445 LBOTE students enrolled in SSPs, representing 32.4% of total SSP enrolments. This figure is not broken down into SA4 groupings but is included in SA4 Groups Total.
- Primary support students are included in Year 3 to 6. Secondary support students are included in Year 7 to 10.
- For more detailed analysis of students of language background other than English, please refer to **CESE Bulletin Issue 14 - Language Diversity in NSW, 2015**.
- See explanatory notes 10 and 16.

Table 18

Enrolments (FTE) in NSW government schools by FOEI quarters and SA4 groupings, April 2015

SA4 Groupings	Quarter 1	Quarter 2	Quarter 3	Quarter 4	Total	Quarter 1 (%)
Sydney-North	2,923	8,376	19,503	52,088	82,890	3.5%
Sydney-Inner	4,922	7,564	12,752	29,775	55,013	8.9%
Sydney-South	15,059	19,104	21,410	21,340	76,913	19.6%
Sydney-South West	31,225	26,144	17,630	10,185	85,184	36.7%
Sydney-West	24,056	19,452	17,820	20,048	81,376	29.6%
Sydney-North West	11,753	15,949	15,580	19,119	62,401	18.8%
Sydney Total	89,938	96,589	104,695	152,555	443,777	20.3%
North East NSW	22,083	19,468	13,140	9,460	64,151	34.4%
North West NSW	27,569	20,808	12,017	7,457	67,851	40.6%
South West NSW	19,068	16,966	10,784	7,558	54,376	35.1%
South East NSW	20,157	21,590	16,449	13,806	72,002	28.0%
Central Coast, Newcastle	21,343	24,012	18,545	16,063	79,963	26.7%
Regional Total	110,220	102,844	70,935	54,344	338,343	32.6%
NSW	200,158	199,433	175,630	206,899	782,120	25.6%

Notes:

- Enrolments are from system extracts in April and are not mid-year census enrolments which are extracted in August.
- See explanatory notes 15 and 16.

Table 19

Primary students in NSW government schools studying a language other than English by year of schooling and language, May 2015

Language Name	Kinder	Year 1	Year 2	Year 3	Year 4	Year 5	Year 6	Total
Chinese (Mandarin)	2,844	2,808	3,462	2,893	2,825	2,850	2,569	20,251
Italian	1,481	1,804	1,800	2,125	1,990	1,762	1,611	12,625
Arabic	1,629	1,676	1,390	1,322	1,414	1,195	1,237	9,885
French	790	850	875	947	840	720	742	5,764
Japanese	705	750	682	863	845	801	681	5,327
Vietnamese	687	607	669	724	770	637	700	4,794
Indonesian	425	467	423	605	546	535	571	3,572
Greek	502	643	545	452	429	452	457	3,480
Korean	630	407	347	389	434	371	326	2,904
Spanish	322	217	249	220	219	182	171	1,580
Wiradjuri	220	246	223	232	234	176	179	1,523
German	141	163	155	165	181	114	177	1,096
Assyrian	71	102	73	89	89	83	99	606
Hebrew	129	134	87	107	51	57	38	603
Macedonian	57	59	69	104	88	78	79	534
Khmer	73	59	78	73	74	63	62	482
Hindi	12	106	85	84	101	30	16	434
Gamilaraay	71	62	73	44	38	48	45	406
Turkish	70	50	67	54	57	51	54	405
Tamil	17	65	67	73	113	19	20	374
Bundjalung	68	43	44	56	52	37	45	351
Dharug	79	76	87	15	16	18	18	309
Bengali	66	47	41	36	45	40	27	302
Gumbaynggir	76	46	19	34	28	31	38	286
Ngemba / Ngiyampaa	11	48	61	50	40	37	38	285
Greek (Modern)				59	57	105	58	279
Dari	55	47	30	37	40	33	24	266
Samoaan	33	37	34	36	39	42	36	257
Punjabi	47	50	41	47	51			236
Auslan	33	43	22	33	32	32	30	225
Portuguese						118	105	223
Dhurga	40	28	27	28	21	18	25	187
Urdu	32	31	23	24	28	17	14	169
Serbian	1	24	20	33	24	28	26	156
Tongan	19	14	24	17	23	15	16	128
Wadi Wadi	11	12	10	15	7	10	9	95
Paakantji / Barkindji	10	10	13	15	12	15	9	84
Russian	11	9	7	13	9	12	8	69
Nepali	7	10	11	10	3	9	7	57
Maori	10	6	2	7	8	7	7	47
Farsi	5	4	8	3	6	5	8	39
Gathang				11	10	8	5	34
Dhanggatti / Dughutti / Thunghutti	5	3	4	6	4			32
Dharawal		15	16					31
Lao	5	5	3	5	4	4	2	28
Maori (Cook Island)	3	2	3	10		9		27
Fijian	8	1	4	6			4	23
Chinese (Cantonese)	6	9						15
Total	11,517	11,895	11,973	12,171	11,897	10,874	10,393	80,885

Notes:

- The table includes data from the K-6 Community Languages Program (CLP) and the K-6 Languages Program (non-CLP) collections.
- Students may study more than one language.
- Students in Distance Education and Opportunity Classes (OC) are included with their appropriate grade levels.
- There were an additional 165 students in support classes who studied a language other than English.
- The overall totals for individual languages may include students in support classes.

Table 20

Language participation Year 7-9 by gender and year of schooling, August 2015

Language Name	Year 7			Year 8			Year 9			All Students		
	Boys	Girls	Total	Boys	Girls	Total	Boys	Girls	Total	Boys	Girls	Total
Japanese	5,798	5,606	11,404	5,111	5,045	10,156	1,001	1,387	2,388	11,910	12,038	23,948
French	3,899	3,836	7,735	3,738	4,081	7,819	312	866	1,178	7,949	8,783	16,732
Italian	1,019	1,122	2,141	1,519	1,715	3,234	114	291	405	2,652	3,128	5,780
Chinese (Mandarin)	1,340	1,408	2,748	1,135	1,131	2,266	239	385	624	2,714	2,924	5,638
Indonesian	1,133	1,070	2,203	1,057	948	2,005	43	114	157	2,233	2,132	4,365
German	582	367	949	1,149	923	2,072	172	213	385	1,903	1,503	3,406
Spanish	514	534	1,048	539	581	1,120	74	113	187	1,127	1,228	2,355
Latin	167	215	382	181	207	388	63	75	138	411	497	908
Korean	206	214	420	147	90	237	57	58	115	410	362	772
Arabic	108	104	212	154	232	386	50	51	101	312	387	699
Greek (Modern)	70	86	156	218	126	344	36	48	84	324	260	584
Gumbaynggir	234	201	435							234	201	435
Wiradjuri	95	91	186	79	51	130				174	142	316
Vietnamese	17	33	50	82	81	163	22	37	59	121	151	272
Gamilaraay	70	53	123	54	45	99				124	98	222
Dhurga	95	84	179							95	84	179
Hindi	7	5	12	22	20	42	8	8	16	37	33	70
Macedonian	13	11	24	10	13	23	7	12	19	30	36	66
Hebrew	17	17	34	11	13	24	5	1	6	33	31	64
Turkish	5	12	17	7	8	15	7	21	28	19	41	60
Ngemba / Ngiyampaa	22	9	31	16	12	28				38	21	59
Paakantji / Barkindji	10	7	17	19	22	41				29	29	58
Serbian	8	11	19	5	13	18	4	9	13	17	33	50
Polish	7	5	12	8	6	14	5	6	11	20	17	37
Yuwaalaraay	14	11	25	3	1	4				17	12	29
Wergaia	9	11	20	5	3	8	0	0	0	14	14	28
Croatian	2	3	5	1	5	6	6	8	14	9	16	25
Punjabi							9	5	14	9	5	14
Filipino	12		12							12		12
Khmer	0	2	2	3	3	6	2	2	4	5	7	12
Bengali	5		5	1	5	6				6	5	11
Armenian	1	2	3	1	2	3	1	1	2	3	5	8
Sign Languages	1	4	5	2		2				3	4	7
Hungarian	1		1	1	2	3	1	1	2	3	3	6
Greek (Classical)							3	2	5	3	2	5
Maltese		2	2		1	1	1	1	2	1	4	5
Russian							3	2	5	3	2	5
Portuguese	1		1				1	1	2	2	1	3
Total	15,482	15,136	30,618	15,278	15,385	30,663	2,246	3,718	5,964	33,006	34,239	67,245

Notes:

- The table includes students studying a language through the Saturday School of Community Languages.
- The table includes only students learning a language on average for more than 1 hour per week for 35 or more weeks a year.
- There were an additional 20,675 students who were learning a language for a shorter duration.

Table 21

Course enrolments in Year 10 subjects in NSW government schools, 2015

BOS Course ID	Course name	Hours	Boys	Girls	Total
300	English	200	25,780	25,248	51,028
302	English (Life Skills)		1,297	568	1,865
323	Mathematics	200	25,826	25,264	51,090
325	Mathematics (Life Skills)		1,287	571	1,858
350	Science	200	25,838	25,272	51,110
352	Science (Life Skills)		1,282	560	1,842
410	Aboriginal Studies	200	101	112	213
411	Aboriginal Studies	100	49	45	94
412	Aboriginal Studies (Life Skills)		18	10	28
430	Commerce	200	4,678	4,328	9,006
431	Commerce	100	959	1,020	1,979
432	Commerce (Life Skills)		9	7	16
440	Geography	200	185	95	280
441	Geography	100	50	213	263
450	History	200	1,468	1,473	2,941
451	History	100	611	729	1,340
452	History Elective Life Skills		4	7	11
500	Work Education	200	361	350	711
501	Work Education	100	629	624	1,253
502	Work Education (Life Skills)		313	134	447
792	Aboriginal Languages (Life Skills)		11	8	19
800	Arabic	200	22	68	90
801	Arabic	100	4	20	24
810	Chinese	200	214	244	458
811	Chinese	100	55	75	130
812	Chinese (Life Skills)		14	1	15
820	Classical Greek	200	1	7	8
870	French	200	276	862	1,138
871	French	100	54	126	180
872	French (Life Skills)		4	1	5
880	German	200	133	195	328
881	German	100	24	35	59
882	German (Life Skills)		8	6	14
890	Hebrew	200	3	1	4
891	Hebrew	100	3	1	4
910	Indonesian	200	35	87	122
911	Indonesian	100	3	5	8
920	Italian	200	67	253	320
921	Italian	100	39	59	98
922	Italian (Life Skills)		15	11	26
930	Japanese	200	703	1,015	1,718
931	Japanese	100	148	167	315
932	Japanese (Life Skills)		4	1	5
940	Korean	200	29	45	74
941	Korean	100	4	11	15
950	Latin	200	46	70	116
951	Latin	100		2	2
990	Modern Greek	200	7	8	15
991	Modern Greek	100	1	21	22
992	Modern Greek (Life Skills)			1	1
1010	Russian	200	1	3	4
1040	Spanish	200	21	61	82
1041	Spanish	100	17	47	64
1042	Spanish (Life Skills)		3	1	4
1050	Turkish	200	7	10	17
1051	Turkish	100	1	1	2

Table 21

Course enrolments in Year 10 subjects in NSW government schools, 2015 (continued)

BOS Course ID	Course name	Hours	Boys	Girls	Total
1071	Vietnamese	200	36	29	65
1072	Vietnamese	100	9	8	17
1605	Agricultural Technology	200	2,271	1,887	4,158
1606	Agricultural Technology	100	576	469	1,045
1607	Agricultural Technology (Life Skills)		85	34	119
1625	Food Technology	200	3,815	7,433	11,248
1626	Food Technology	100	1,151	1,565	2,716
1627	Food Technology (Life Skills)		423	220	643
1650	Design and Technology	200	478	538	1,016
1651	Design and Technology	100	309	387	696
1652	Design & Technology (Life Skills)		93	32	125
1700	Graphics Technology	200	1,227	274	1,501
1701	Graphics Technology	100	397	154	551
1702	Graphics Technology (Life Skills)		4		4
1800	Industrial Technology (Automotive)	200	281	15	296
1801	Industrial Technology (Automotive)	100	90	2	92
1802	Industrial Technology (Building and Construction)	200	368	16	384
1803	Industrial Technology (Building and Construction)	100	181	32	213
1804	Industrial Technology (Ceramics)	200	1		1
1805	Industrial Technology (Ceramics)	100	1	16	17
1806	Industrial Technology (Electronics)	200	1,187	43	1,230
1807	Industrial Technology (Electronics)	100	322	27	349
1808	Industrial Technology (Engineering)	200	2,399	138	2,537
1809	Industrial Technology (Engineering)	100	474	50	524
1810	Industrial Technology (Farm Maintenance)	200	54	8	62
1811	Industrial Technology (Farm Maintenance)	100	3	1	4
1812	Industrial Technology (Leather)	200	1	2	3
1813	Industrial Technology (Leather)	100	3	1	4
1814	Industrial Technology (Metal)	200	2,316	204	2,520
1815	Industrial Technology (Metal)	100	804	116	920
1816	Industrial Technology (Multimedia/Photography)	200	508	211	719
1817	Industrial Technology (Multimedia/Photography)	100	225	157	382
1820	Industrial Technology (Timber)	200	6,022	944	6,966
1821	Industrial Technology (Timber)	100	1,253	373	1,626
1830	Information & Software Technology	200	4,763	1,354	6,117
1831	Information & Software Technology	100	865	307	1,172
1832	Information & Software Technology (Life Skills)		121	49	170
1840	Industrial Technology - Automotive (Life Skills)		4		4
1841	Industrial Technology -Building & Construction (Life Skills)		7		7
1842	Industrial Technology - Ceramics (Life Skills)		1	2	3
1843	Industrial Technology - Electronics (Life Skills)		4		4
1844	Industrial Technology - Engineering (Life Skills)		8	1	9
1847	Industrial Technology - Metal (Life Skills)		51	3	54
1848	Industrial Technology - Multimedia/Photography (Life Skills)		7	1	8
1850	Industrial Technology - Timber (Life Skills)		172	41	213
1900	Textiles Technology	200	31	1,797	1,828
1901	Textiles Technology	100	32	680	712
1902	Textiles Technology (Life Skills)		19	35	54
2000	Dance	200	89	1,717	1,806
2001	Dance	100	21	266	287
2002	Dance (Life Skills)		15	14	29
2010	Drama	200	1,454	3,255	4,709
2011	Drama	100	384	700	1,084
2012	Drama (Life Skills)		53	25	78

Table 21**Course enrolments in Year 10 subjects in NSW government schools, 2015 (continued)**

BOS Course ID	Course name	Hours	Boys	Girls	Total
2050	Music	200	3,240	3,688	6,928
2051	Music	100	670	768	1,438
2052	Music (Life Skills)		226	116	342
2060	Visual Arts	200	2,608	6,221	8,829
2061	Visual Arts	100	679	1,190	1,869
2062	Visual Arts (Life Skills)		429	209	638
2070	Visual Design	200	264	595	859
2071	Visual Design	100	163	350	513
2072	Visual Design (Life Skills)		12	4	16
2080	Photographic and Digital Media	200	1,258	2,819	4,077
2081	Photographic and Digital Media	100	562	1,059	1,621
2082	Photographic and Digital Media (Life Skills)		16	15	31
2420	Personal Development, Health and P.E.	200	11,557	11,996	23,553
2421	Personal Development, Health and P.E.	100	13,878	12,915	26,793
2422	Personal Development, Health and P.E. (Life Skills)		1,201	526	1,727

Number of students meeting the curriculum requirements for the Record of School Achievement (RSA), Year 10 students in NSW government schools, 2015

In 2012, the School Certificate was discontinued and replaced by the Record of School Achievement (RSA). The RSA is a record of a student's achievements from Year 10 until they leave school.

The table shows the number of Year 10 students that completed the mandatory courses for an RSA. Some courses may have been completed when the students were in Year 7, 8 or 9. For example, the Languages course would have been completed by students when they were in Year 7 or 8.

	Boys	Girls	Total
Number of students	26,339	25,263	51,602

Source: Department of Education, data derived from Board of Studies, Teaching and Education Standards data.

Notes:

- The table includes students studying a language through the Saturday School of Community Languages.
- Hours equal to the number of hours studied over Years 9 and 10.
- From 2012, eligible students who leave school before receiving their Higher School Certificate (HSC) will receive the NSW Record of School Achievement (RSA).
- Students need to complete the mandatory requirements for Stage 5 (Year 10) to be eligible for a RSA. They must have:
 - » attended a government school, an accredited non-government school or a recognised school outside NSW;
 - » undertaken and completed courses of study that satisfy the Board's curriculum and assessment requirements for the Record of School Achievement;
 - » complied with any other regulations or requirements (such as attendance) imposed by the Minister or the Board; and
 - » completed Year 10.
- Students intending to leave school before completing their HSC can take optional online literacy and numeracy tests. They are designed to provide an overview of a student's level of achievement in these areas.
- Students are required to complete the following mandatory curriculum for the RSA:
 - » English
 - » Mathematics
 - » Science
 - » Human Society and its Environments
 - » Languages other than English
 - » Technological and Applied Studies
 - » Creative Arts
 - » Personal Development, Health and Physical Education

Table 22

Course enrolments in Year 11 and Year 12 subjects in NSW government schools, 2015

Course Name	Units	Year 11			Year 12		
		Boys	Girls	Total	Boys	Girls	Total
Aboriginal Studies	2	240	460	700	118	239	357
Aboriginal Studies Life Skills	2	7	10	17	6	3	9
Aged Care Specialisation Study	1					6	6
Agriculture	2	667	738	1,405	457	471	928
Agriculture Life Skills	2	38	15	53	33	21	54
Ancient History	2	3,682	4,666	8,348	2,674	3,834	6,508
Arabic Beginners	2		3	3			
Arabic Continuers	2	74	107	181	47	86	133
Arabic Extension	1				13	23	36
Armenian Continuers	2		2	2		2	2
Automotive	2	30	4	34	14	1	15
Automotive	4	2		2	2		2
Automotive Examination (Mechanical Technology)	2				2	1	3
Automotive Specialisation Study	1	1		1			
Biology	2	5,292	8,405	13,697	3,628	6,162	9,790
Business and Economics Life Skills	2	15	21	36	12	16	28
Business Services	2	366	909	1,275	247	699	946
Business Services	4	16	20	36	19	41	60
Business Services Examination	2				196	518	714
Business Services Specialisation Study	1		1	1			
Business Studies	2	6,007	5,825	11,832	4,294	4,273	8,567
Chemistry	2	5,111	4,181	9,292	3,581	2,882	6,463
Chinese Background Speakers	2	327	405	732	216	310	526
Chinese Beginners	2	14	38	52	6	15	21
Chinese Continuers	2	11	25	36	11	24	35
Chinese Extension	1				4	1	5
Citizenship and Legal Studies Life Skills	2	40	25	65	49	29	78
Classical Greek Continuers	2	3	1	4			
Community and Family Studies	2	670	6,245	6,915	375	4,579	4,954
Community and Family Studies Life Skills	2	60	87	147	23	87	110
Community Pharmacy Specialisation Study	2		2	2		1	1
Construction	2	3,153	132	3,285	1,929	53	1,982
Construction	4	74	3	77	44	8	52
Construction Examination	2				1,363	35	1,398
Construction School-based Apprenticeship	2	1		1	1		1
Construction School-based Apprenticeship	4	1		1			
Construction School-based Apprenticeship Specialisation	2				1		1
Creative Arts Life Skills	2	301	141	442	233	134	367
Croatian Continuers	2	1	1	2	1	3	4
Dance	2	54	814	868	28	614	642
Dance Life Skills	2	5	13	18	3	7	10
Design and Technology	2	1,458	751	2,209	920	509	1,429
Design and Technology Life Skills	2	48	7	55	22	10	32
Drama	2	1,104	2,165	3,269	728	1,729	2,457
Drama Life Skills	2	25	18	43	18	26	44
Earth and Environmental Science	2	774	627	1,401	495	333	828
Economics	2	2,199	1,356	3,555	1,530	954	2,484
Electrotechnology	2	11		11	2		2
Electrotechnology Examination	2				2		2
Engineering Studies	2	2,139	148	2,287	1,419	86	1,505
English (Advanced)	2	6,251	9,126	15,377	4,975	7,703	12,678
English (Standard)	2	10,735	10,292	21,027	9,354	9,321	18,675
English as a Second Language	2	1,172	1,173	2,345	941	954	1,895
English Extension	1	1,380	2,322	3,702			

Table 22

Course enrolments in Year 11 and Year 12 subjects in NSW government schools, 2015 (continued)

Course Name	Units	Year 11			Year 12		
		Boys	Girls	Total	Boys	Girls	Total
English Extension 1	1				617	1,619	2,236
English Extension 2	1				200	640	840
English Life Skills	2	1,083	485	1,568	793	492	1,285
Entertainment Industry	2	457	533	990	334	432	766
Entertainment Industry	4				1		1
Entertainment Industry Examination	2				255	370	625
Filipino Continuers	2	5	2	7	3	7	10
Financial Services	2	2	2	4		1	1
Financial Services Examination	2					1	1
Food Technology	2	1,027	2,214	3,241	619	1,630	2,249
Food Technology Life Skills	2	288	137	425	161	120	281
French Beginners	2	174	607	781	83	367	450
French Continuers	2	100	267	367	50	172	222
French Extension	1				5	45	50
Fundamentals of English	2	259	248	507			
Fundamentals of English (Part 1)	1	327	343	670			
Fundamentals of English (Part 2)	1	5	21	26			
Geography	2	1,534	1,192	2,726	1,042	824	1,866
Geography Life Skills	2	101	35	136	44	18	62
German Beginners	2	47	68	115	25	50	75
German Continuers	2	71	108	179	54	57	111
German Extension	1				6	14	20
Heritage Chinese (Mandarin)	2	24	68	92	14	78	92
Heritage Indonesian	2	1	6	7	1	1	2
Heritage Japanese	2	14	17	31	4	10	14
Heritage Korean	2	19	49	68	21	40	61
Hindi Continuers	2	6	7	13	4	13	17
History Extension	1				230	528	758
History Life Skills	2	123	51	174	79	29	108
Hospitality	2	2,229	4,803	7,032	1,403	3,481	4,884
Hospitality	4	62	140	202	62	96	158
Hospitality Examination (Food and Beverage)	2				528	1,539	2,067
Hospitality Examination (Kitchen Operations and Cookery)	2				566	1,390	1,956
Hospitality Specialisation Study	1	3	4	7	5	4	9
Hospitality Specialisation Study	2		2	2	18	36	54
Human Services	2	10	115	125	31	176	207
Human Services	4	3	16	19			
Human Services Examination	2				16	90	106
Human Society and its Environment Life Skills	2	406	170	576	275	166	441
Hungarian Continuers	2	1	1	2	1	2	3
IDT Examination (Digital Animation)	2				14		14
IDT Examination (Networking and Hardware)	2				9		9
IDT Examination (Web and Software Applications)	2				434	99	533
Indonesian Background Speakers	2	2	6	8	1	3	4
Indonesian Beginners	2	14	17	31	2	10	12
Indonesian Continuers	2	16	36	52	6	26	32
Indonesian Extension	1				1	7	8
Industrial Technology	2	5,369	826	6,195	3,220	481	3,701
Industrial Technology Life Skills	2	149	18	167	94	7	101
Information and Digital Technology	2	607	109	716	547	135	682
Information and Digital Technology	4	20	2	22	27	3	30
Information and Digital Technology Specialisation Study	1	1		1			
Information and Digital Technology Specialisation Study	2	15	3	18	5	2	7
Information and Digital Technology Specialisation Study	3	10		10	9	2	11

Table 22

Course enrolments in Year 11 and Year 12 subjects in NSW government schools, 2015 (continued)

Course Name	Units	Year 11			Year 12		
		Boys	Girls	Total	Boys	Girls	Total
Information Processes and Technology	2	1,812	402	2,214	1,403	269	1,672
Information Processes and Technology Life Skills	2	47	11	58	33	6	39
Italian Beginners	2	109	282	391	39	136	175
Italian Continuers	2	25	58	83	11	53	64
Italian Extension	1					11	11
Japanese Background Speakers	2	3	10	13	8	5	13
Japanese Beginners	2	375	504	879	197	320	517
Japanese Continuers	2	214	395	609	163	290	453
Japanese Extension	1				54	102	156
Khmer Continuers	2	3	7	10	5	3	8
Korean Background Speakers	2	35	35	70	25	27	52
Korean Continuers	2	3	21	24	1	14	15
Latin Continuers	2	29	36	65	27	33	60
Latin Extension	1				20	25	45
Legal Studies	2	3,100	4,897	7,997	2,319	3,568	5,887
Macedonian Continuers	2	5	12	17	7	5	12
Mathematics	2	7,048	6,066	13,114	4,683	4,086	8,769
Mathematics Extension	1	3,744	2,972	6,716			
Mathematics Extension 1	2				2,950	2,209	5,159
Mathematics Extension 2	2				1,309	796	2,105
Mathematics General	2	12,930	12,201	25,131			
Mathematics General 2	2				8,749	8,943	17,692
Mathematics Life Skills	2	1,067	469	1,536	755	468	1,223
Metal and Engineering	2	1,402	49	1,451	752	24	776
Metal and Engineering	4	24	2	26	46	1	47
Metal and Engineering Examination	2				529	17	546
Metal and Engineering SBA Specialisation	2				1		1
Metal and Engineering School-based Apprenticeship	2	1		1			
Metal and Engineering Specialisation Study	2	1		1			
Modern Greek Beginners	2	25	26	51	5	20	25
Modern Greek Continuers	2	21	29	50	12	35	47
Modern Greek Extension	1				4	18	22
Modern History	2	3,633	3,946	7,579	2,664	3,196	5,860
Music 1	2	2,022	1,953	3,975	1,493	1,451	2,944
Music 2	2	205	265	470	175	188	363
Music Extension	1				111	124	235
Music Life Skills	2	75	36	111	69	47	116
Persian Background Speakers	2	18	17	35	14	10	24
Personal Development, Health & PE Life Skills	2	791	327	1,118	553	313	866
Personal Development, Health and Physical Education	2	5,066	5,881	10,947	3,680	4,511	8,191
Physics	2	5,775	1,753	7,528	4,462	1,255	5,717
Polish Continuers	2	2	4	6	3	5	8
Portuguese Continuers	2		5	5	1	4	5
Primary Industries	2	783	422	1,205	450	339	789
Primary Industries	4	26	5	31	22	11	33
Primary Industries Examination	2				341	270	611
Primary Industries Specialisation Study	1				5	6	11
Primary Industries Specialisation Study	2	24	3	27	29	8	37
Punjabi Continuers	2	5	7	12			
Retail Operations Extension	1				1	5	6
Retail Services	2	546	1,158	1,704	461	1,090	1,551
Retail Services	4	3	3	6	26	27	53
Retail Services Examination	2				339	752	1,091
Russian Continuers	2	18	17	35	9	11	20
Science Life Skills	2	539	255	794	345	218	563

Table 22

Course enrolments in Year 11 and Year 12 subjects in NSW government schools, 2015 (continued)

Course Name	Units	Year 11			Year 12		
		Boys	Girls	Total	Boys	Girls	Total
Senior Science	2	1,773	1,412	3,185	2,191	1,889	4,080
Serbian Continuers	2	8	7	15	5	7	12
Society and Culture	2	1,107	3,936	5,043	607	2,471	3,078
Society and Culture Life Skills	2	25	20	45	13	9	22
Software Design and Development	2	1,706	179	1,885	1,065	69	1,134
Spanish Beginners	2	44	146	190	27	95	122
Spanish Continuers	2	31	50	81	26	61	87
Spanish Extension	1				8	20	28
Studies of Religion I	1	309	361	670	113	215	328
Studies of Religion I Life Skills	1		1	1			
Studies of Religion II	2	219	901	1,120	143	678	821
Studies of Religion II Life Skills	2		3	3	1	1	2
Swedish Continuers	2		1	1			
Tamil Continuers	2	2	2	4	1	3	4
Technology Life Skills	2	333	147	480	256	127	383
Textiles and Design	2	35	1,354	1,389	21	1,020	1,041
Textiles and Design Life Skills	2	2	16	18	1	12	13
Tourism, Travel and Events	2	3	17	20	1	12	13
Tourism, Travel and Events Examination	2					2	2
Turkish Continuers	2	8	43	51	6	15	21
Ukrainian Continuers	2	3	2	5	1	2	3
Vietnamese Continuers	2	65	84	149	59	85	144
Visual Arts	2	2,165	4,983	7,148	1,462	3,905	5,367
Visual Arts Life Skills	2	238	135	373	149	132	281
Work and the Community Life Skills	2	743	322	1,065	500	347	847

Source: Department of Education, data derived from Board of Studies, Teaching and Education Standards data.

Notes:

- Based on school of tuition, board developed courses only, and includes subjects studied through distance education, the Open High School and Saturday School of Community Languages.

Table 23

Apparent retention in NSW government schools, 2005-2015

Year	Year 7-10			Year 7-11			Year 7-12			Year 10-11			Year 10-12		
	Boy	Girl	Total	Boy	Girl	Total	Boy	Girl	Total	Boy	Girl	Total	Boy	Girl	Total
2005	94.8	95.4	95.1	72.5	83.2	77.7	61.5	73.0	67.2	76.5	86.6	81.4	64.2	75.9	69.9
2006	95.2	95.8	95.5	73.1	83.1	78.0	60.5	72.5	66.4	77.1	87.1	82.0	63.9	75.5	69.6
2007	96.0	96.6	96.3	73.9	83.8	78.7	60.0	71.5	65.7	77.6	87.5	82.4	63.3	75.0	69.1
2008	96.6	96.6	96.6	73.9	84.0	78.8	60.3	72.0	66.0	77.0	86.9	81.9	63.3	75.2	69.1
2009	95.6	97.4	96.5	77.3	85.1	81.1	61.5	73.9	67.6	80.0	88.1	84.0	64.1	76.5	70.2
2010	99.4	100.2	99.8	81.1	89.7	85.3	64.9	74.8	69.7	84.8	92.2	88.4	67.1	77.4	72.2
2011	102.2	102.4	102.3	83.3	91.3	87.2	66.1	77.6	71.7	83.7	91.1	87.3	69.1	79.7	74.3
2012	101.4	102.8	102.1	86.1	93.3	89.6	66.9	77.4	72.0	84.3	91.0	87.6	67.3	77.3	72.2
2013	102.0	102.1	102.0	88.1	94.6	91.3	69.0	79.7	74.3	86.9	92.0	89.4	67.6	77.8	72.6
2014	103.0	103.2	103.1	89.3	94.9	92.1	70.9	81.2	75.9	87.6	92.9	90.2	69.9	79.0	74.4
2015	103.3	103.9	103.6	90.2	95.9	93.0	71.3	80.7	75.9	87.6	93.0	90.2	70.0	79.0	74.4

Notes:

- Apparent retention is based on full-time equivalent units (FTEs), including full-time and part-time students. Students enrolled in distance education classes are included with their appropriate grade levels.
- Legislation raising the minimum school leaving age from 15 to 17 came into effect in January 2010. The Year 12 cohort in 2012 was the first group of students who were required to complete Year 10. This meant that the Year 10 enrolment figure was higher than in previous years, resulting in a relative decline in Year 10 to Year 12 apparent retention in 2012, despite the Year 7 to Year 12 apparent retention rate increasing slightly.
- See explanatory note 9.

Figure 6

Apparent retention (%) in NSW government schools, 2005-2015

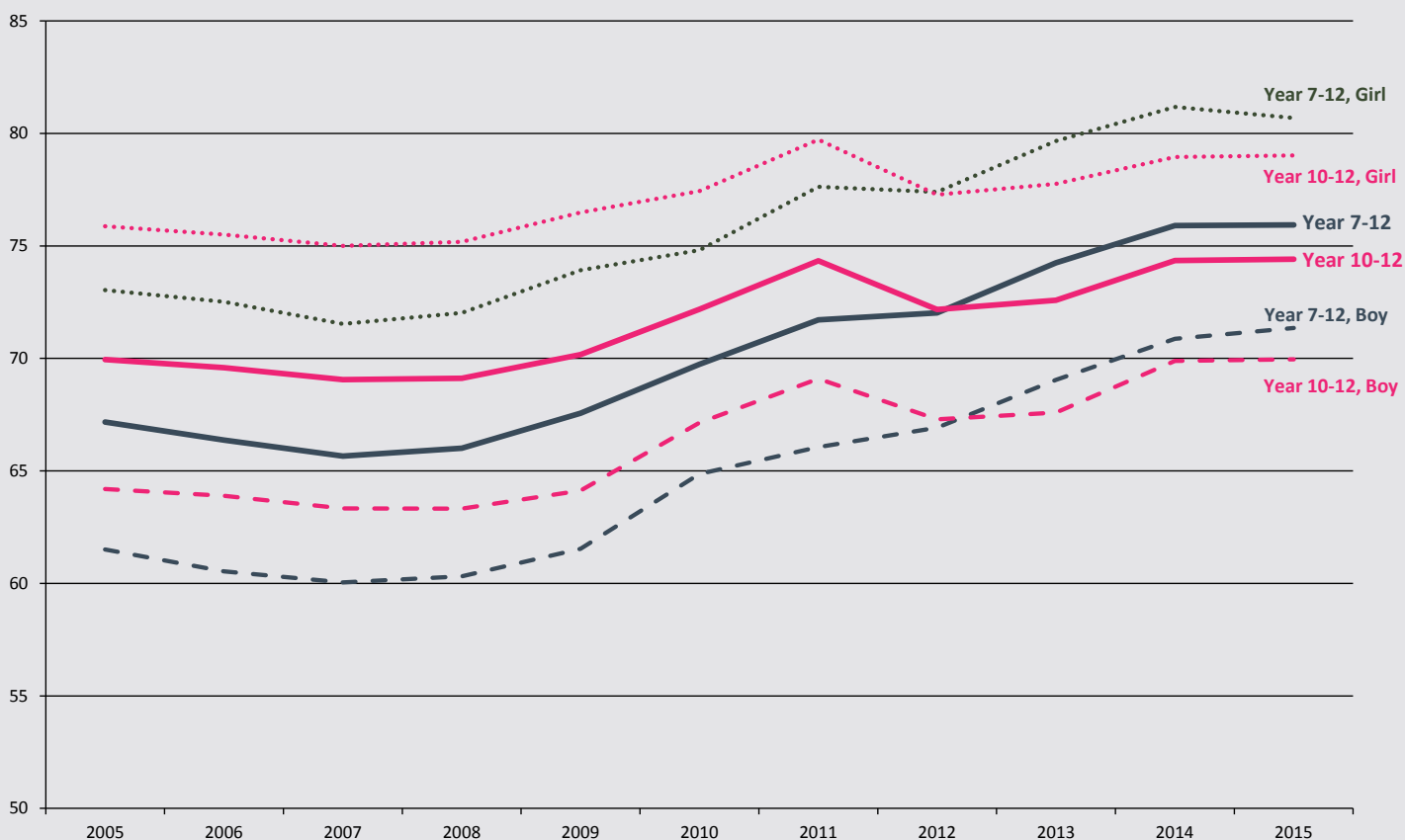


Table 24**NSW government school HSC completions, Year 12 students only, 2005-2015**

Number of Students	2005	2006	2007	2008	2009	2010	2011	2012	2013	2014	2015
HSC Record of Achievement (All Students)	38,175	37,739	38,275	38,815	39,164	41,347	41,987	42,452	43,694	44,511	45,000
HSC Record of Achievement (Aboriginal Students)	626	646	736	824	906	991	1,082	1,242	1,381	1,386	1,366
HSC Award (All Students)	35,917	35,460	35,854	36,468	36,465	38,181	38,661	38,774	38,908	39,340	39,312
HSC Award (Aboriginal Students)	574	603	674	755	815	862	919	1,061	1,150	1,139	1,097

Notes:

- HSC Record of Achievement includes all students who received an HSC Award.
- HSC Record of Achievement includes students who participated in HSC pathways.
- HSC pathways offer a flexible program for students to complete the HSC over a period of up to five years. The pathways provisions include accumulating courses, repeating courses, acceleration, recognition of prior learning, and combining study with part-time traineeships or apprenticeships.
- Bradfield college included.
- See explanatory note 13.

Table 25

Schools attendance rates by Aboriginality and year level, 2015

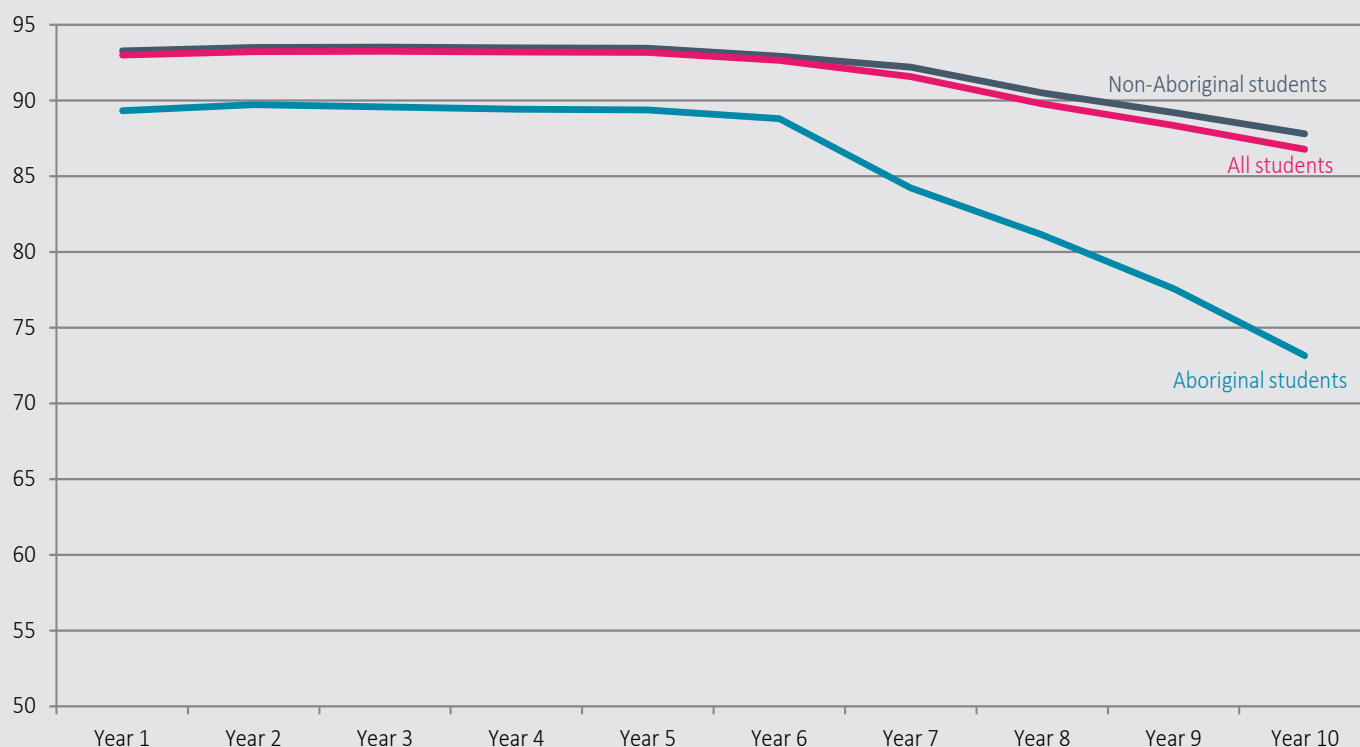
Grade	Semester 1 (%)			Semester 2 (%)			Full Year (%)		
	Aboriginal	Non-Aboriginal	All Students	Aboriginal	Non-Aboriginal	All Students	Aboriginal	Non-Aboriginal	All Students
Year 1	90.2	94.1	93.8	88.3	92.3	92.0	89.3	93.3	93.0
Year 2	90.6	94.3	94.0	88.7	92.5	92.3	89.7	93.5	93.2
Year 3	90.4	94.4	94.1	88.6	92.5	92.2	89.6	93.5	93.3
Year 4	90.4	94.3	94.0	88.3	92.5	92.2	89.4	93.5	93.2
Year 5	90.2	94.3	94.0	88.4	92.5	92.2	89.4	93.5	93.2
Year 6	89.9	93.8	93.5	87.5	91.9	91.6	88.8	92.9	92.7
Primary Support	87.8	91.0	90.5	85.5	89.3	88.7	86.8	90.3	89.7
Primary Total	90.2	94.1	93.9	88.2	92.3	92.0	89.3	93.3	93.0
Year 7	86.0	93.3	92.7	82.1	90.9	90.2	84.2	92.2	91.6
Year 8	82.6	91.3	90.6	79.4	89.6	88.8	81.1	90.5	89.8
Year 9	79.2	90.1	89.3	75.6	88.1	87.2	77.6	89.2	88.4
Year 10	74.4	88.7	87.7	71.5	86.7	85.7	73.2	87.8	86.8
Secondary Support	75.2	85.2	83.5	74.1	83.5	81.9	74.7	84.4	82.8
Secondary Total	80.2	90.6	89.8	77.0	88.6	87.7	78.8	89.7	88.9
Yr1 - Yr10 (Inc. Support)	86.5	92.9	92.4	84.1	91.0	90.5	85.4	92.1	91.6

Notes:

- The attendance data are for full-time, Year 1-10 students only (including Support).
- All students in Years 1 to 10 in NSW government schools are regarded as full-time.
- Ungraded students in NSW Government Schools are classified as either primary or secondary according to their level of education.
- For more detailed analysis of Semester 1 school attendance, please refer to **CESE Bulletin Issue 15 - Government School Student Attendance 2015 (Semester 1)**.
- See explanatory note 11.

Figure 7

Full year attendance rates (%) in NSW government schools, Aboriginal, non-Aboriginal and all students, Years 1-10, 2015



Notes:

- Full year data includes both Semesters 1 and 2.
- Excludes Kindergarten, Years 11 and 12, primary support and secondary support.

Explanatory Notes

Each year the education departments of all states and territories in Australia, and the Australian Government Department of Education and Training collect data on government and non-government schools, and their students. Since 1994 the date for collection has been the first Friday in August, as close as possible with the national Census of Population and Housing conducted every five years. The 2015 census of NSW Government schools was conducted on August 7th. Initial results were published in CESE Bulletin Issue 16, Inbrief Mid-year Census, 2015.

In 1996, there were changes to the collection dates for some of the information reported in this bulletin. Data on students by age, gender and year of schooling, for all students and for Aboriginal and Torres Strait Islander students, are collected at the mid-year census. Data on students of non-English speaking background are collected in Term 1.

This Bulletin consolidates data from the Department's Term 1 and midyear data collections. It also reports on non-government data collected by the Australian Government Department of Education and Training.

Government and non-government school data form part of the National Schools Statistics Collection which is reported annually by the Australian Bureau of Statistics in Schools Australia (Catalogue No. 4221.0).

1. Primary and Secondary Schools

Primary schools enrol students in Kindergarten to Year 6; secondary schools generally enrol students in Years 7 to 12, although some secondary schools only enrol students in the senior years, i.e. Years 11 to 12 or the junior years, i.e. Years 7 to 10.

2. Central/Community Schools

Central/community schools have primary and secondary departments and may be established where there is an enrolment in secondary classes of 20 or more. Enrolments in primary departments and secondary departments are included with the appropriate student data.

3. Schools for Specific Purposes

Schools for specific purposes (SSPs) are for students with specific needs. Students in SSPs are reported according to the type of specific need rather than by their year of schooling. Students with multiple disabilities are reported according to their main disability.

Most schools for specific purposes have permanent enrolments and include schools for students with intellectual (mild, moderate and severe) and physical disabilities, visual or hearing impairment, behaviour disorders or emotional disturbance, and students in juvenile justice centres. Some SSPs have no permanent enrolments because the children temporarily attending them are enrolled and counted in their own schools. These are mainly hospital schools.

4. Support Classes

Some students with specific needs are enrolled in support classes in primary, secondary and central schools. Students enrolled in support classes are reported according to the type of specific need rather than by their year of schooling. Support classes for students of mixed abilities are classified according to the predominant type of specific need present in the class. Support class enrolments are included with other primary and secondary enrolments in some tables; other tables combine enrolments in support classes in ordinary schools with enrolments in SSPs.

5. Distance Education

Distance education centres (DECs) provide schooling for students who are isolated or whose special circumstances prevent them from attending a regular school. They operate either as separate schools or as units within regular primary, central and high schools. Students enrolled in DECs are counted in their corresponding years of schooling.

In conjunction with the Open High School, DECs also provide individual subject enrolment, widening study opportunities for secondary students. These students are enrolled and counted at their home schools.

6. Part-time Students

Students in Years 11 or 12 can enrol to study as a part-time student or a full-time student. For the annual census, a part-time student is enrolled in less than 10 units, regardless of where those units are studied. All Kindergarten to Year 10 students are considered to be full-time.

7. Full-time Equivalent Enrolments

Following the introduction of part-time study in secondary schools in 1993, student enrolments are generally reported in full-time equivalent units (FTE). The FTE for students studying less than 10 units, the minimum workload, is determined by the formula: $0.1 \times$ the number of units studied and represented as a proportion of the full-time enrolment of 1.0 FTE.

8. Aboriginal and Torres Strait Islander Students

Students are counted as Aboriginal or Torres Strait Islanders (A&TSI) if they are identified and accepted as such by the community with which they are associated, and they identify themselves on the School Enrolment Form.

9. Apparent Retention Rates (ARR)

Retention rates are 'apparent' as they do not track individual students through their final years of secondary schooling. What they measure is the ratio of the total number of full-time school students in a designated year (e.g. Year 12 in 2015) divided by the total number of full-time students in a previous

year (e.g. Year 7 in 2010). This would be the Year 7 to 12 apparent retention rate in 2015.

Care should be taken in the interpretation of apparent retention rates, which can exceed 100%, because the method of calculation does not take into account a range of factors such as migration, interstate movements of students, transfers to and from non-government schools, part-time schooling, students repeating a year of schooling, or students pursuing other education and training pathways.

10. Students of Language Background other than English (LBOTE)

Students are counted as being of language background other than English if in their home a language other than English is spoken by the students, parents or guardians.

11. Attendance

Government school systems in Australia measure attendance rates throughout the first semester (terms 1 and 2). This is the time period specified for data collection in National Education Agreements between the Commonwealth and state and territory governments. Schools for Special Purposes' attendance data is not collected.

The attendance rate is defined as the number of actual full time equivalent 'student days attended' over the collection period as a percentage of the total number of possible student days attended over the collection period (Measurement Framework for Schooling in Australia KPM 7(b)).

12. Class Size

The audit of class sizes in NSW government primary schools is undertaken in March each year. The audit does not include schools for specific purposes, distance education centres or intensive English centres.

The number of classes, average class sizes and enrolment numbers exclude support classes in primary and central schools.

13. Higher School Certificate (HSC)

The Higher School Certificate is the highest educational award in secondary education in New South Wales. It is awarded to students who have satisfactorily completed Years 11 and 12 at secondary school. To be eligible, students must meet HSC course requirements and sit for the statewide HSC examinations.

14. Colleges

The secondary schools in some areas have been transformed into colleges in order to provide broader opportunities and better facilities for students. A college is the amalgamation of all the secondary schools within a specific area. Each former secondary school has become a campus of their college. A senior college campus is generally for students in Years 11 and 12 but in some cases, may include Year 10 students. The

colleges have formed cooperative ventures with TAFE Institutes and universities. They offer a wide range of options from specialist senior Higher School Certificate courses to school re-entry courses.

15. Family Occupation and Education Index

The Family Occupation and Education Index (FOEI) is a school-level index of educational disadvantage related to socio-economic background. It has been selected as the basis of the equity loading for socio-economic background in the Department's Resource Allocation Model.

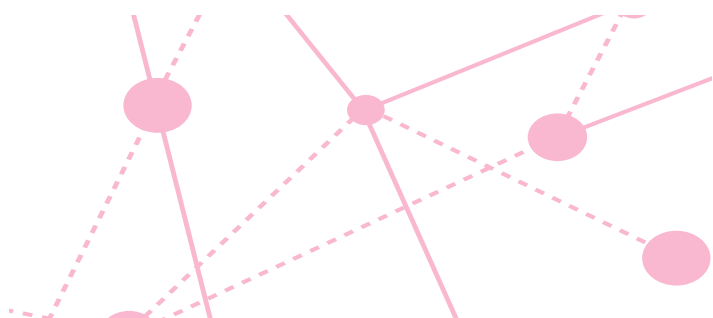
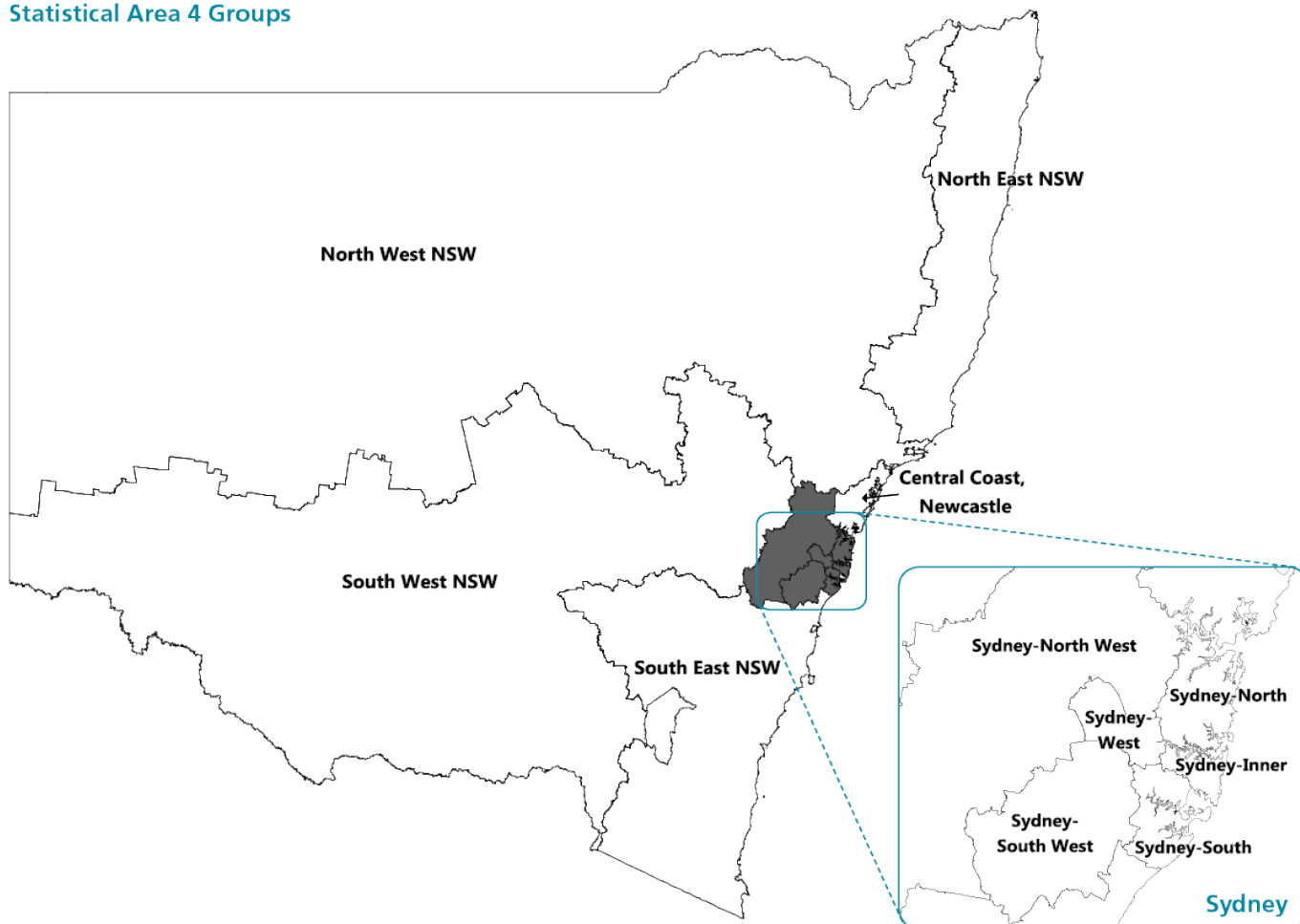
FOEI is constructed from parental education and occupation information collected from student enrolment forms and recorded in the Enrolment Registration Number system. FOEI uses a statistical regression model to produce a weighted combination of school-level parental education and occupation variables based on the extent to which each variable uniquely predicts average school performance.

16. Statistical Area 4 Groupings

Previous publications of the Statistical Bulletin compared enrolments in DEC regions. From 2014 these geographies have been discontinued and replaced with a geographical structure based on the new ABS Australian Statistical Geography Standard (ASGS). Groups of ASGS Statistical Area 4 (SA4) boundaries in New South Wales have been combined into 11 groups for reporting and publication of Department data.

Name of SA4 Groupings	SA4 Name
Sydney-North	» Sydney - North Sydney and Hornsby, » Sydney - Northern Beaches, » Sydney - Ryde
Sydney-Inner	» Sydney - City and Inner South, » Sydney - Eastern Suburbs, » Sydney - Inner West
Sydney-South	» Sydney - Inner South West, » Sydney - Sutherland
Sydney-South West	» Sydney - Outer South West, » Sydney - South West
Sydney-West	» Sydney - Blacktown, » Sydney - Parramatta
Sydney-North West	» Sydney - Baulkham Hills and Hawkesbury, » Sydney - Outer West and Blue Mountains
North East NSW	» Coffs Harbour - Grafton, » Mid North Coast, » Richmond - Tweed
North West NSW	» Hunter Valley exc Newcastle, » Far West and Orana, » New England and North West
South West NSW	» Central West, » Murray, » Riverina
South East NSW	» Capital Region, » Illawarra, » Southern Highlands and Shoalhaven
Central Coast, Newcastle	» Central Coast, » Newcastle and » Lake Macquarie

Statistical Area 4 Groups



Contact Details

For more information about the Centre for Education Statistics and Evaluation, please contact us:

☎ 02 9561 1211

@ cese@det.nsw.edu.au

🌐 www.cese.nsw.gov.au

Centre for Education Statistics and Evaluation
GPO Box 33
Sydney NSW 2001
Australia

 02 9561 8000

 cese@det.nsw.edu.au

 www.cese.nsw.gov.au

© November 2016
NSW Department of Education



Education
Centre for Education
Statistics & Evaluation

