

NSW Foundation Spatial Data Framework:

Positioning Theme

Dataset/product title: Survey Control Information Management System (SCIMS)

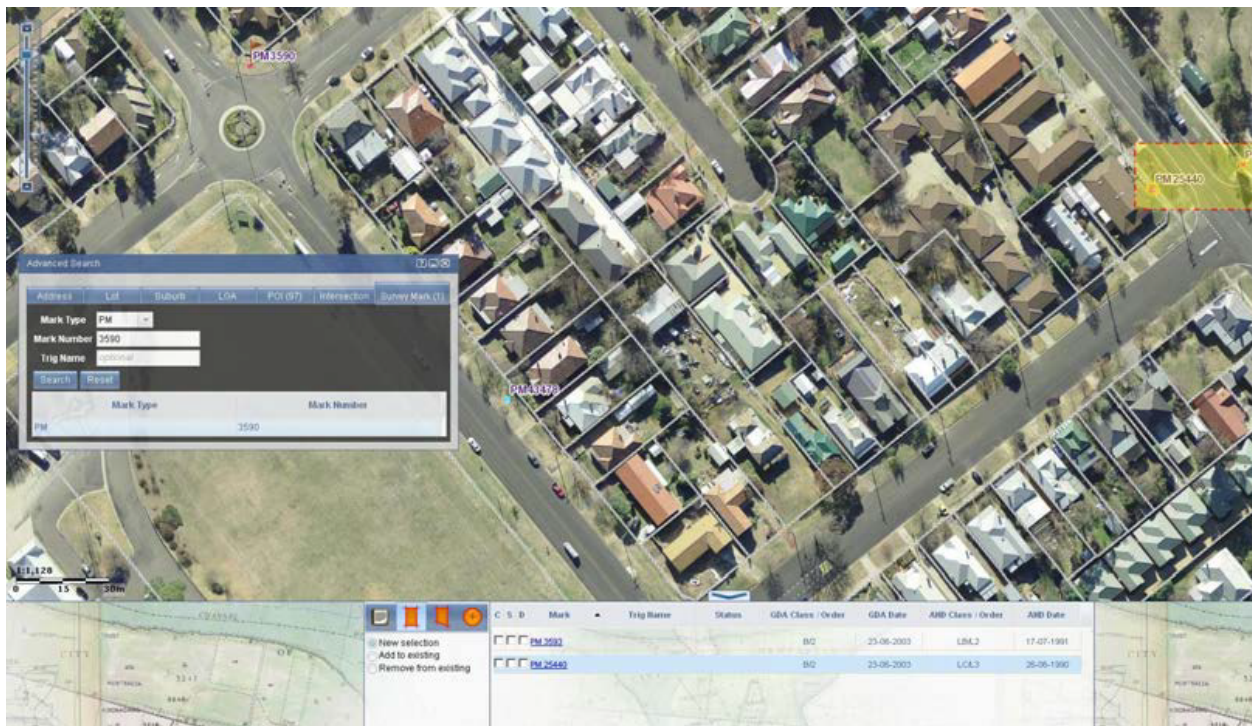


Image depicts a screenshot of the SCIMS interface through SIX Maps © DFSI Spatial Services 2018

Dataset/product description	<p>The Survey Control Information Management System (SCIMS) is a database that contains all of the coordinates, heights and related information for NSW survey marks that form the official State Survey Control Network.</p> <p>The network is represented physically by over 250,000 survey marks positioned at varying densities across NSW. Each survey mark is assigned a horizontal and vertical spatial position and a class and order, according to accuracy, monument and other factors. Detailed metadata information is also recorded. SCIMS data is supplied to the surveying and spatial industries through the SCIMS online internet product.</p>
Dataset uses	<p>SCIMS is a reliable and accurate spatial referencing system that underpins cadastral boundary definition, engineering/ infrastructure surveys, mapping and a variety of other spatial applications. The database is frequently utilised for asset management, establishing property boundaries, constructing public infrastructure and environmental monitoring. The uncertainties assigned to marks have varying degrees of accuracy and therefore have specific purposes.</p>

<p>Current status</p>	<p>SCIMS contains coordinates and related information for more than 250,000 survey marks established under the direction of the Surveyor General. These marks are tied to the GDA/MGA coordinate reference system and AHD71 vertical reference system. They are also assigned horizontal and vertical uncertainties. This data is continuously being collected and updated.</p>
<p>Standards and specifications</p>	<p>Metadata for the relevant Spatial Services datasets are required to comply with AS/NZS ISO 19115 ANZLIC Metadata Profile v1.1 and ISO 19139</p> <p>Intergovernmental Committee on Surveying and Mapping 2014. Standards and Practices for Control Surveys (SP1). ICSM Publication no 1. Version 2.1</p> <p>IERS 2003 computation standards</p> <p>National Measurement Act 1960</p> <p>Surveying and Spatial Information Act 2002</p> <p>Surveying and Spatial Information Regulation 2017</p> <p>Surveyor General’s Direction No.1: Approved Permanent Marks</p> <p>Surveyor General’s Direction No.2: Preparation of Locality Sketch Plans</p> <p>Surveyor General’s Direction No.4: Using SCIMS</p> <p>Surveyor General’s Direction No.7: Surveying and Spatial Information Regulation 2017 - Applications</p> <p>Surveyor General’s Direction No.11: Preservation of Survey Infrastructure</p> <p>Surveyor General’s Direction No.12: Control Surveys and SCIMS</p>
<p>Access and licensing</p>	<p>Spatial Services, a division of the Department of Finance, Services and Innovation (DFSI) creates and manages Intellectual Property for the Crown in right of New South Wales.</p> <p>Acquisition of this data is subject to the customer entering into an appropriate Creative Commons license agreement.</p> <p>To the extent that Creative Commons licensing applies, all data and other material produced by Spatial Services constitutes Crown copyright.</p>

<p>Access and licensing</p>	<p>Spatial Services has applied the Creative Commons Attribution 3.0 Australia Licence. Spatial Services asserts the right to be attributed as author of the original material in the following manner:</p> <div data-bbox="523 327 938 472" data-label="Image"> </div> <p>© Spatial Services [date of extraction]</p> <p>Additional terms for the use of Spatial Services material</p> <p>Any derived products which are created will be required to clearly mark the date that any extractions from the Spatial Services Spatial Database occurred.</p> <p>All Intellectual Property which is owned by Spatial Services should only be loaded on any external cloud platforms if Spatial Services' Intellectual Property remains unchanged, maintained and preserved.</p>
<p>Metadata</p>	<p>NSW SCIMS dataset</p>
<p>Updates</p>	<p>SCIMS data is updated daily.</p>
<p>Custodian agency and contact</p>	<p>Name: DFSI Spatial Services Address: 346 Panorama Ave Bathurst NSW 2795 Email: SS-SCIMS@finance.nsw.gov.au</p>
<p>Aggregator(s)</p>	<p>Name: DFSI Spatial Services Address: 346 Panorama Ave Bathurst NSW 2795 Email: SS-SCIMS@finance.nsw.gov.au</p>
<p>Distributor(s)</p>	<p>Name: DFSI Spatial Services Address: 346 Panorama Ave Bathurst NSW 2795 Email: SS-SCIMS@finance.nsw.gov.au</p>