

# NSW Foundation Spatial Data Framework:

## Land Cover Theme

### Dataset/product title: Land Use

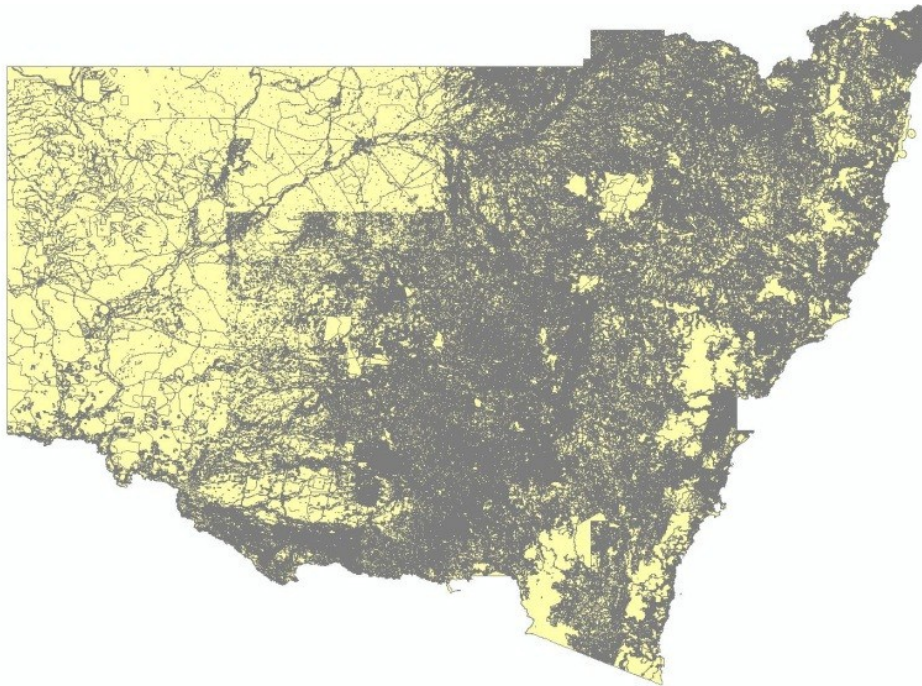


Image depicts a sample of the NSW Land Use map extent  
© Office of Environment and Heritage 2014

<b>Dataset/product description</b>	<p>Dataset of Land Use between June 2000 and June 2007 for the whole of New South Wales. Land use polygons are classified to both NSW classification (LUMAP) and National standards (ALUM, Australian Land Use and Management).</p> <p>The ALUM classification is based upon the modified Baxter and Russell classification and presented according to the specifications contained in <a href="#">Baxter and Russell Classification</a>.</p> <p>The date of the data set is set as the land use occurring at the time the satellite imagery was acquired, which can range from 1999 to 2006. The V2 dataset was updated in May 2011 to include values in the attribute fields of Source, Source Date, Source Scale, Reliability and LU Mapping Date and is ALUM Version 7 compatible.</p>
<b>Dataset uses</b>	<p>Suitable for Strategic Land-use planning issues-state and local government. Suitable for modelling exercises related to climate change, erosion, recharge, biodiversity, planning disease control and assessment of high value rural assets.</p>

	The dataset contains information on dryland cultivation and irrigated cultivation, irrigation infrastructure and information related to vegetation present at the time of mapping. Some areas have information related to irrigation and land management practices present along with areas with vegetation canopy cover information at the time of mapping.
<b>Current status</b>	Complete as of 2007.
<b>Standards and specifications</b>	Land Use mapped to ACLUMP standard. More classes identified in NSW LuMap.  Hard copy mapping was prepared at 1:50,000 or 1:25,000. On screen mapping undertaken at 1:10,000 or better.
<b>Access and licensing</b>	For access and licencing please contact: info@environment.nsw.gov.au
<b>Metadata</b>	<a href="#">NSW Landuse</a>
<b>Updates</b>	Sydney 1:100 000 map sheet to be incorporated into NSW dataset. NSW OEH is currently looking into ways of updating priority areas using ancillary datasets and as funding become available.
<b>Custodian agency and contact</b>	Office of Environment and Heritage Head Office PO Box A290 Sydney South NSW 1232 Email: info@environment.nsw.gov.au
<b>Aggregator(s)</b>	Office of Environment and Heritage Head Office PO Box A290 Sydney South NSW 1232 Email: info@environment.nsw.gov.au
<b>Distributor(s)</b>	Office of Environment and Heritage Head Office PO Box A290 Sydney South NSW 1232 Email: info@environment.nsw.gov.au