

NSW Foundation Spatial Data Framework:

Elevation and Depth Theme

Dataset/product title: Digital Elevation Model

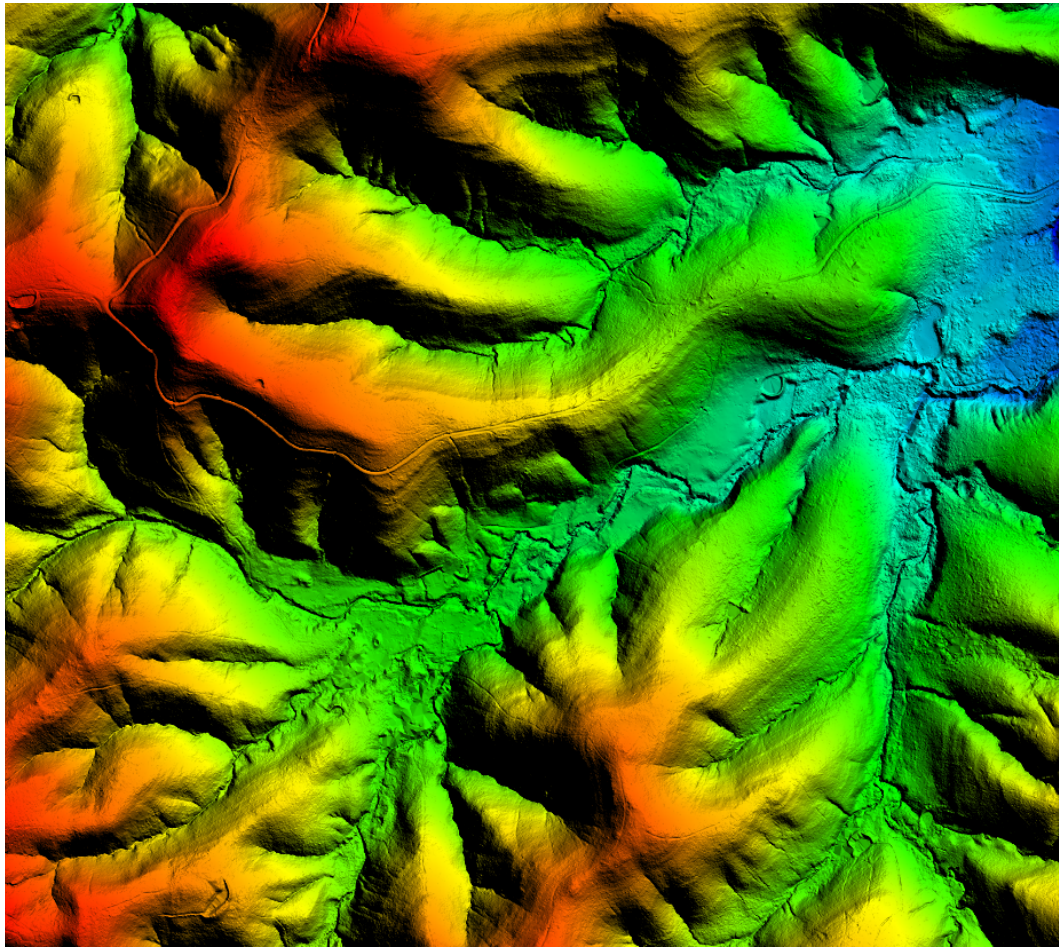


Image depicts sample of the NSW Digital Elevation Model dataset © DFSI Spatial Services 2018

Dataset/product description	<p>Digital Elevation Models (DEM) are derived from Spatial Services' (SS) point cloud data. The DEM is a bare earth representation of the earth's surface where all the above ground feature has been removed.</p> <p>DEM derived from LiDAR Are 1m or 2m resolution. Data is not hydrologically enforced (breaklines) or hydrologically conditioned (identification and analysis of sinks).</p> <p>DEM derived photogrammetry Data is 5m resolution. Areas of no data caused by steep slopes, shadow and vegetation have been interpolated or filled-in with another data source and will not be as accurate as the bare open ground areas. The data is not hydrologically enforced (breaklines) or hydrologically conditioned (identification and analysis of sinks).</p>
------------------------------------	---

<p>Dataset uses</p>	<p>This product has been produced for Spatial Services, local and state government and agency programs including Emergency Services. This product is also used on a whole of government basis as a visible record of the landscape at a given point in time, allowing for analysis to be carried out relating to flood modelling and water catchment management.</p>
<p>Current status</p>	<p>The LiDAR program is focused on the entire coast of NSW and west to the Great Dividing Range. Additionally, the program extends to rural towns in the central and western Divisions.</p> <p>Photogrammetric DEM's have been generated from airborne imagery for the central and western divisions of NSW.</p>
<p>Standards and specifications</p>	<p>Metadata for the relevant Spatial Services datasets complies with AS/NZS ISO 19115-2, ANZLIC Metadata Profile v1.1 and ISO 19139</p> <p>Intergovernmental Committee on Surveying and Mapping (ICSM) Guidelines for Digital Elevation Data</p> <p>Spatial Services: Elevation Data Products Specification and Description (LiDAR)</p> <p>Spatial Services: Elevation Data Products Specification and Description (Airborne Photogrammetry)</p>
<p>Access and licensing</p>	<p>Spatial Services, a division of the Department of Finance, Services and Innovation (DFSI) creates and manages Intellectual Property for the Crown in right of New South Wales.</p> <p>Acquisition of this data is subject to the customer entering into an appropriate Creative Commons license agreement.</p> <p>To the extent that Creative Commons licensing applies, all data and other material produced by Spatial Services constitutes Crown copyright.</p> <p>Spatial Services has applied the Creative Commons Attribution 3.0 Australia Licence. Spatial Services asserts the right to be attributed as author of the original material in the following manner:</p> <div data-bbox="528 1771 943 1912" data-label="Image"> <p>The image shows the Creative Commons Attribution-NonCommercial 3.0 Australia License logo. It consists of three circular icons in a row: the first contains 'cc', the second contains a person icon, and the third contains a crossed-out dollar sign. Below these icons, the letters 'BY' and 'ND' are displayed in a bold, sans-serif font.</p> </div> <p>© Spatial Services [date of extraction]</p>

	<p>Additional terms for the use of Spatial Services material</p> <p>Any derived products which are created will be required to clearly mark the date that any extractions from the Spatial Services Spatial Database occurred.</p> <p>All Intellectual Property which is owned by Spatial Services should only be loaded on any external cloud platforms if Spatial Services' Intellectual Property remains unchanged, maintained and preserved.</p>
Metadata	Digital Elevation Model
Updates	DEM data is based on point cloud data. LiDAR point cloud data is updated in specific locations across NSW as required. An update of the photogrammetrically derived point cloud is not planned.
Custodian agency and contact	Name: DFSI Spatial Services Address: 346 Panorama Ave Bathurst NSW 2795 Email: SS-SDS@finance.nsw.gov.au
Aggregator(s)	Name: DFSI Spatial Services Address: 346 Panorama Ave Bathurst NSW 2795 Email: SS-Environmental@finance.nsw.gov.au
Distributor(s)	Name: DFSI Spatial Services Address: 346 Panorama Ave Bathurst NSW 2795 Email: SS-SDS@finance.nsw.gov.au