

NSW Foundation Spatial Data Framework:

Elevation and Depth Theme

Dataset/product title: NSW Relative Heights

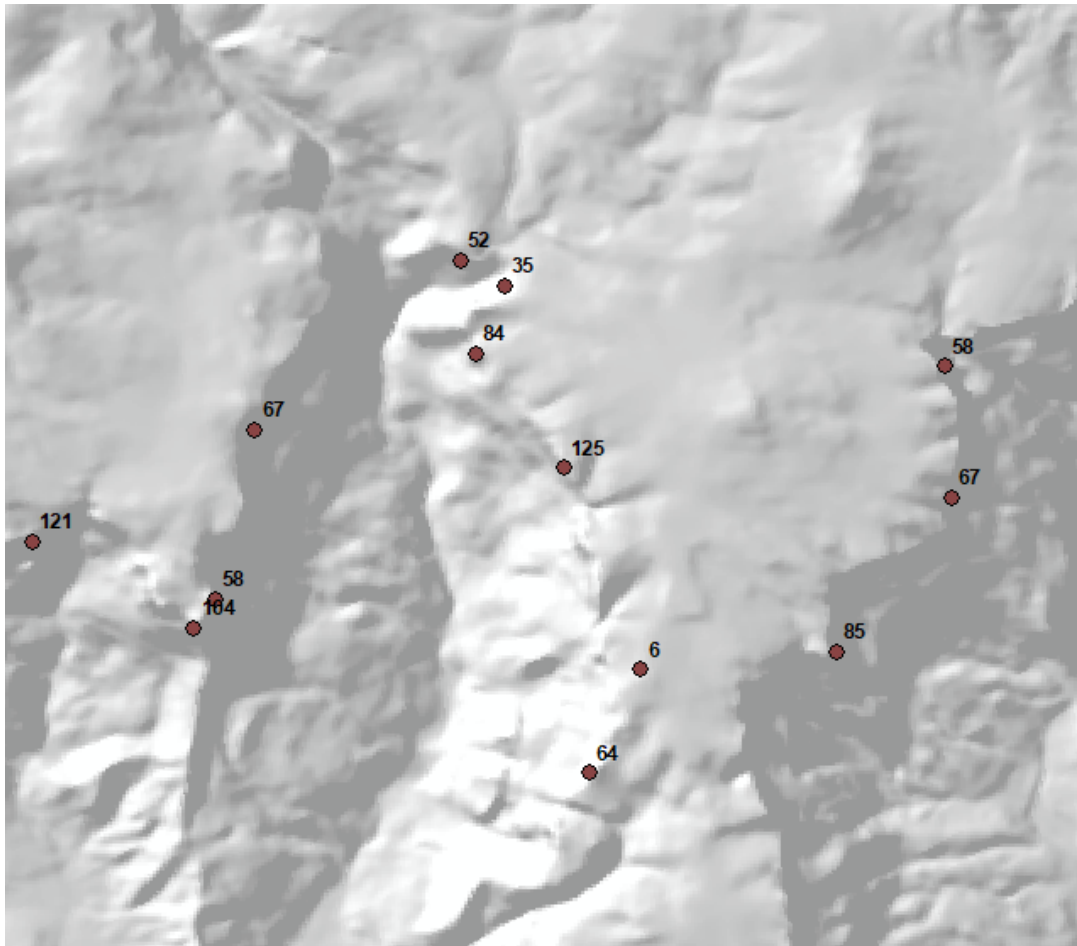


Image depicts sample of the NSW Relative Height dataset © Spatial Services 2018

Dataset/product description	Relative Height is a point feature class representing relative heights of a vertical face of a cliff. It is a part of the NSW Digital Topographic Database (DTDB).
Dataset uses	<p>Elevation and Depth provides an authoritative digital representation of the Earth's surface enabling evidence based decision making, policy development and an essential reference to other foundation datasets.</p> <p>Elevation and Depth underpins:</p> <ul style="list-style-type: none">• safe hydrographic, aeronautical and road navigation• climate science, including climate change adaptation

	<ul style="list-style-type: none"> • emergency management and natural hazard risk assessment • environmental, including water management • engineering projects and infrastructure development • definition of maritime and administrative boundaries • defence and national security • natural resource exploration and exploitation.
Current status	Data is as initially captured at 1:25 000, 1:50 000 and 1:100 000 scales from stereoscopic aerial photography.
Standards and specifications	Metadata for the relevant Spatial Services datasets are required to comply with AS/NZS ISO 19115 ANZLIC Metadata Profile v1.1, ISO 19115-2 and ISO 19139. AS/NZS ISO 4819:2011
Access and licensing	<p>Spatial Services, a division of the Department of Finance, Services and Innovation (DFSI) creates and manages Intellectual Property for the Crown in right of New South Wales.</p> <p>Acquisition of this data is subject to the customer entering into an appropriate Creative Commons license agreement.</p> <p>To the extent that Creative Commons licensing applies, all data and other material produced by Spatial Services constitutes Crown copyright.</p> <p>Spatial Services has applied the Creative Commons Attribution 3.0 Australia Licence. Spatial Services asserts the right to be attributed as author of the original material in the following manner:</p> <div data-bbox="523 1245 938 1391" data-label="Image"> </div> <p>© Spatial Services [date of extraction]</p> <p>Additional terms for the use of Spatial Services material</p> <p>Any derived products which are created will be required to clearly mark the date that any extractions from the Spatial Services Spatial Database occurred.</p> <p>All Intellectual Property which is owned by Spatial Services should only be loaded on any external cloud platforms if Spatial Services' Intellectual Property remains unchanged, maintained and preserved.</p>
Metadata	Relative Heights

Updates	Not planned.
Custodian agency and contact	Name: DFSI Spatial Services Address: 346 Panorama Ave Bathurst NSW 2795 Email: SS-SDS@finance.nsw.gov.au
Aggregator(s)	Name: DFSI Spatial Services Address: 346 Panorama Ave Bathurst NSW 2795 Email: SS-Environmental@finance.nsw.gov.au
Distributor(s)	Name: DFSI Spatial Services Address: 346 Panorama Ave Bathurst NSW 2795 Email: SS-SDS@finance.nsw.gov.au