

NSW Foundation Spatial Data Framework:

Water Theme

Dataset/product title: NSW Hydro Line

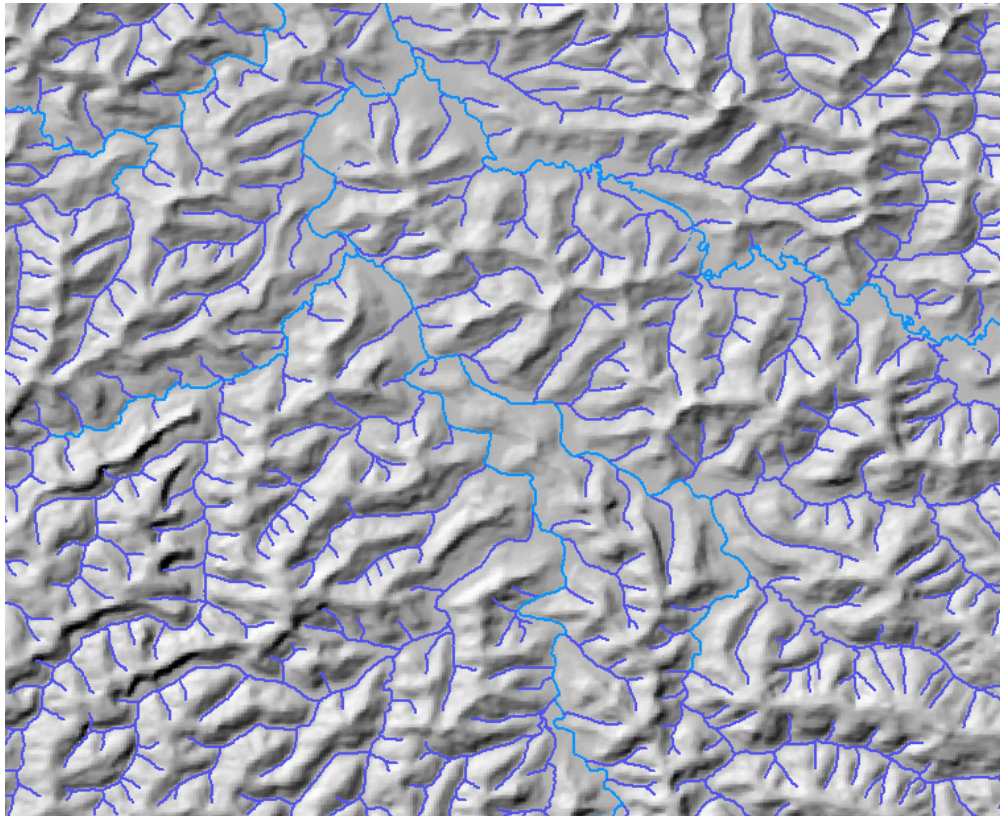


Image depicts sample of the NSW Hydro Line dataset © DFSI Spatial Services 2018

Dataset/product description	NSW Hydro Line defines the centreline of a water course. It includes features such as natural water course, canal-drain, race, spill way and tunnel-siphon. It includes key attributes such as hydro line name, perennially and flow direction.
Dataset uses	<p>Water security is one of Australia's major challenges.</p> <p>Key users of the hydrology data are NSW State and Local Government agencies as well as Federal Government agencies. These bodies use this data to better manage State and Local Government assets. This hydrology data provides the NSW component of the Australian Hydrological Geospatial Fabric which is a critical input to the Australian Water Resources Information System.</p> <p>More widespread use of the hydrology data is also found in emergency management response and recovery efforts, hazard mitigation or disaster risk reduction, climate change, natural resource assessment, environmental planning and monitoring, insurance, mining and agriculture.</p>

Current status	Spatial Services continuously updates this theme with information sourced from relevant stakeholders and custodians; by data verification from other internal and external databases; research and through Spatial Services' regular cycle of updating from aerial imagery and elevation data.
Standards and specifications	Metadata for the relevant Spatial Services datasets are required to comply with AS/NZS ISO 19115 ANZLIC Metadata Profile v1.1, ISO 19115-2 and ISO 19139. AS/NZS ISO 4819:2011
Access and licensing	<p>Spatial Services, a division of the Department of Finance, Services and Innovation (DFSI) creates and manages Intellectual Property for the Crown in right of New South Wales.</p> <p>Acquisition of this data is subject to the customer entering into an appropriate Creative Commons license agreement.</p> <p>To the extent that Creative Commons licensing applies, all data and other material produced by Spatial Services constitutes Crown copyright.</p> <p>Spatial Services has applied the Creative Commons Attribution 3.0 Australia Licence. Spatial Services asserts the right to be attributed as author of the original material in the following manner:</p> <div data-bbox="525 1120 940 1263" data-label="Image"> </div> <p>© Spatial Services [date of extraction]</p> <p>Additional terms for the use of Spatial Services material</p> <p>Any derived products which are created will be required to clearly mark the date that any extractions from the Spatial Services Spatial Database occurred.</p> <p>All Intellectual Property which is owned by Spatial Services should only be loaded on any external cloud platforms if Spatial Services' Intellectual Property remains unchanged, maintained and preserved.</p>
Metadata	Hydro Line
Updates	Continuous as described above.

Custodian agency and contact	Name: DFSI Spatial Services Address: 346 Panorama Ave Bathurst NSW 2795 Email: SS-SDS@finance.nsw.gov.au
Aggregator(s)	Name: DFSI Spatial Services Address: 346 Panorama Ave Bathurst NSW 2795 Email: SS-Environmental@finance.nsw.gov.au
Distributor(s)	Name: DFSI Spatial Services Address: 346 Panorama Ave Bathurst NSW 2795 Email: SS-SDS@finance.nsw.gov.au